

# THE HISTORY OF DELTA PI EPSILON

## 1936-1986

Floyd L. Crank

(Reprinted from *The Delta Pi Epsilon Journal*, Vol. XXVIII, No. 1, Winter, 1986)

### The Early Years

“DELTA PI EPSILON FRATERNITY, an honorary graduate organization for men and women interested in business education, was organized in 1936 at New York University. Its purpose was that of giving recognition and service to outstanding teachers and leaders in this field.” With these words, Delta Pi Epsilon Historian Dr. Dorothy Veon (1957) began the chronicles for the first 20 years with the words, “Under the guidance and leadership of Dr. Paul S. Lomax, Chairman of the Department of Business Education of the School of Education at New York University, other members of the faculty of this Department, and the officers and members of the Commercial Teachers Club, the constitution for the fraternity was drafted and the qualifications for membership were established.”

Dr. Herbert A. Tonne (1976, p. 21), professor emeritus of New York University and former national president of Delta Pi Epsilon (DPE), remembers the beginnings of DPE as: “In the 1930s most business teachers did not have degrees. They came to New York University and many other urban universities to be upgraded. . . . Paul Lomax, Chairman of the Department at NYU, believed in fellowship, and it was a rare Saturday that a group of us did not meet with him for lunch. . . . Two of the more frequent members of these Saturday luncheons were Charles F. Hainfeld and Peter L. Agnew. . . . They soon developed the Business Education Club of New York University. Officers were elected: Hainfeld, president; Agnew, vice president; Foster Loso, treasurer; and I, secretary. Paul Lomax, of course, was sponsor. We had a fine little newsletter edited by Augustin Cosgrove. . . . Hainfeld and Agnew thought that the Business Education Club of New York University might be the basis for a fraternity—first local and then national. The thought led to action with the enthusiastic cooperation of Paul Lomax. A charter meeting was held in 1936.

From these simple beginnings, Delta Pi Epsilon soon became a national honorary graduate business education fraternity with chapters across the nation. The small group of founders must have been forever surprised at the suddenness with which their brainchild grew to adulthood and created such productive endeavors.

---

Dr. Floyd L. Crank is a professor emeritus at Northern Illinois University. Dr. Crank has made many outstanding contributions to teaching, research, and service in business education for over 30 years. The chronology of Delta Pi Epsilon's 50-year history was prepared by the Delta Pi Epsilon Golden Anniversary Committee under the leadership of Dr. Crank.

## **Charter Meeting**

The charter meeting was held in the Spring of 1936. At this meeting, the constitution was formally adopted and officers were elected for 1936-1937: Adolph B. Scholl, President; Clare M. Betz, Vice President; Elmus Ream, Treasurer; Emma Westfall, Secretary; and Paul S. Lomax, Faculty Adviser. The Executive Committee included Lilla Campbell, M. Herbert Freeman, and Charles E. Hainfeld. With the help of several active committees, the Executive Committee planned the first-year program, wrote the initiation ritual, and made plans for the publication of a newsletter and a handbook. From the very first, the members and officers of Delta Pi Epsilon carried out their professional responsibilities with the zeal, enthusiasm, and imagination that were to characterize all future endeavors of DPE members and officers.

## **Charter Members of Delta Pi Epsilon**

The privilege of charter membership was extended to the members of the Commercial Teachers Club of New York University, to members of the faculty of the Department of Business Education, and to outstanding graduate students in the department.

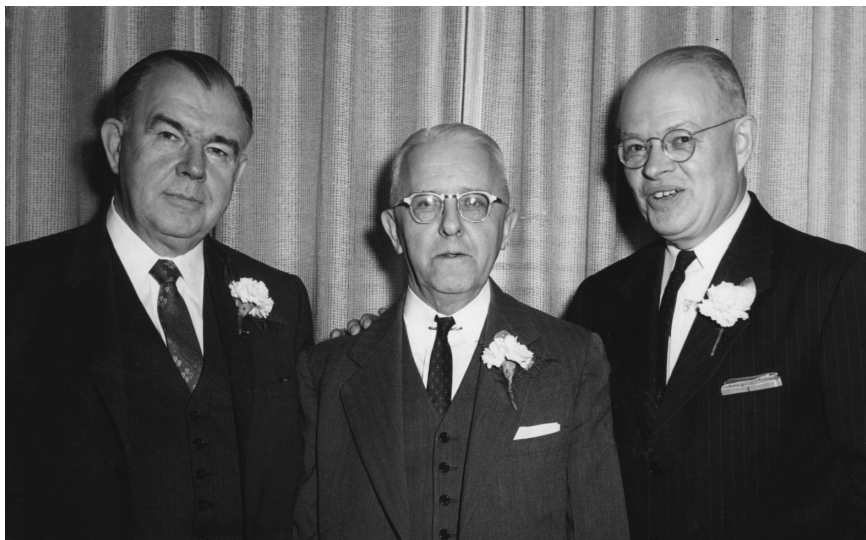
After the fall initiation in 1936, charter membership in the organization was closed. Alpha Chapter listed 106 members—in the charter group: Paul S. Lomax, Peter L. Agnew, Charles Andrews, George E. Beem, William R. Bennett, Clare Betz; Katherine Bourke, Louis Brenner, Ann Callery, Lilla H. Campbell, Bert Card, Ethel M. Comins, Mrs. Roy Concetta, Augustin Cosgrove, Florence Crouch, Cleo Crow, Yolanda De Cesare, Walter Dudas, Maxwell Ehrlich, William H. Ellwood, Arthur W. Falk, M. Herbert Freeman, Louis E. Gillet, Sarah Goldstein, Charles Hainfeld, J Marshall Hanna, Charles J. Hartmann, Carolyn Henelton, Maye C. Hylton, Bertha Jacobs, Dorothy Kerr, Benjamin Kuykendall, Anna D. Knowles, John C. Lackas, M. L. Landrum, Foster Loso, Lucille Mahar, Thomas Mannion, Marguerite McArdle, James R. Meehan, J. B. Miller, Cecilia Murray, Mary O'Sullivan, Elsa Palmer, Robert N. Prestidge, Evangeline Queen, Edna Ream, Elmus L. Ream, Marion Reiner, Esther Sass, Edward Schneider, Adolph Scholl, Andrew Siska, Anna Snedecker, Carl Strony, Mrs. Lempi S. Talvensaari, James M. Thompson, Herbert A. Tonne, John V. Walsh, Lee Waxman, Rosalie Weaver, George Webster, Emma Westfall, George Williams, and John W. Withers.

The second group included: William G. Bente, Jahnig M. Carter, James Decker, Elizabeth Dowd, Astred Edwardson, Glen Eikenberry, Froehlich, Emolyn Gross, Herbert Hamilton, Margaret Haynes, Myers P. Heiges, Anne Hogan, Roy A. James, Adelaide Kauzer, Mildred Larson, Kathryn McDonald, Florence McKenty, Emma Mohlenhoff, Mary Musgrave, Milton Olson, Alice O'Neill, Helen Reynolds, Emily Roe, Lottie Shepard, Helen Sullivan, William Taylor, Ella Unger, and Arthur Williams.

Also included in the group of 106 charter members were: Elizabeth Andrews, Betty I. Bradley, Frank C. Christ, Top Feters, Charles Hamilton, Gilbert Kahn,

Bertha Losee, Ann McCullough, Phyllis Pratt, Edwin Robatt, Madeline Strony, Mavis Talbot, and Mary Tyndall.

New York University (NYU) was an appropriate university for the organization of Delta Pi Epsilon. At NYU, in 1890, the first university school of education (known then as the school of pedagogy) was instituted. In 1900, New York University established one of the first five collegiate schools of business. In 1919, the first university school of retailing was started at NYU. In addition, the School of Commerce, Accounts, and Finance, in cooperation with the existing School of Pedagogy, began its first business teacher training course during the academic year, 1913-1914.



***New York University Leaders in Business Education***

***(left to right):*** Peter L. Agnew, charter initiate of Alpha Chapter and 1942-1943 DPE national vice president; Paul S. Lomax, Founder of Delta Pi Epsilon, charter initiate of Alpha Chapter, and 1944-1945 DPE national president; Herbert A. Tonne, charter initiate of Alpha Chapter and 1954-1955 DPE national president.

**Delta Pi Epsilon's Second Year**

In Spring 1937, new officers were elected for the second year of Delta Pi Epsilon at New York University: Clare M. Betz, President; J Marshall Hanna, Vice President; Emma J. Eikenberry, Secretary; and M. Herbert Freeman, Treasurer. Executive Committee members included Mary O'Sullivan, Adolph Scholl, and George H. Webster.

During the second year, plans were completed to expand Delta Pi Epsilon into a national organization. On December 3, 1937, the fraternity was incorporated as a national organization under the laws of the state of New York. The original constitution was revised, bylaws were formulated and published, and Alpha Chapter of Delta Pi Epsilon was born and officially designated to be at New York University.

During the year of 1937, the publicity committee published the *Delta Pi Epsilon News Letter* and a handbook. On April 2, 1938, DPE sponsored a conference commemorating 25 years of business education at New York University. Dr. Tonne directed the highly successful conference, which carried the theme "The Development of a Business Teacher Program."

In 1938, the first two honorary members in Delta Pi Epsilon were initiated into Alpha Chapter: Hamden L. Forkner and Raymond C. Goodfellow. Dr. John Robert Gregg accepted honorary membership at Alpha Chapter's initiation ceremony on December 3, 1938.

### **First National Officers Elected**

Under the incorporation laws of the State of New York, it was necessary for the young fraternity to elect national officers and to organize a national council. In the spring of 1938, the first national officers were elected at the meeting in New York City. The following officers were chosen: Charles Hainfeld, President; James M. Thompson, Vice President; Clare M. Betz, Secretary; Foster W. Loso, Treasurer; and Robert N. Tarkington, Historian.

The National Council was composed of Frances B. Bowers, J. D. Copeland, Walter Dudas, Charles W. Hamilton, Herbert A. Hamilton, Roy A. James, Adelaide Kauzer, Paul S. Lomax, Clinton A. Reed, and Patty Spruill. It was formally approved by the members of Alpha Chapter that an annual National Council meeting would be held at a designated place.

### **Delta Pi Epsilon's Second Chapter Installed**

McKee Fisk was the guiding force behind the installation of the second chapter of Delta Pi Epsilon. On June 18, 1938, Beta Chapter was installed on the campus of Oklahoma Agricultural and Mechanical (A&M) College, Stillwater. Dr. Lomax presided over the installation, assisted by Dr. Robert N. Tarkington, National Historian. Fifteen business educators became charter members of Beta Chapter. Officers for 1938-1939 were: James O. Thompson, President; Hal F. Holt, Vice President; Ruth C. Williams, Recording Secretary; Ruby Hemphill, Corresponding Secretary; Lehn Showalter, Treasurer; Carol Marie Steward, Historian; and McKee Fisk, Sponsor. The name given to the chapter newsletter was *The Beta Buzz*.

### **Two Chapters Hold DPE'S First National Council**

The first National Council meeting of Delta Pi Epsilon convened at Governor Clinton Hotel, New York City, in 1938. This was the forerunner of an unbroken



string of national council meetings that continue to be the very heartbeat of Delta Pi Epsilon. At this 1938 meeting, national officers were elected for 1938-1939: Charles E. Hainfeld, President; James M. Thompson, Vice President; Madeline S. Strony, Secretary; Robert N. Tarkington, Treasurer; and Ruby Hemphill, Historian. Members of the National Council who were elected for the year, 1938-1939, were: M. Herbert Freeman; J Marshall Hanna; Ruby Hemphill; Hal F. Holt; Eugene H. Hughes; D. D. Lessenberry; Paul S. Lomax; Mary Musgrave; Madeline S. Strony; James M. Thompson; and W. Harmon Wilson.

At this first National Council, a design for the fraternity emblem, the DPE key, was submitted by Foster W. Loso. This emblem was adopted by the National Council.

The national officers who were elected in 1938 decided that a Council meeting was to be held each year as a means of planning and carrying out professional business education activities on a national scale.

### **Beta Chapter Activities**

During 1939, Beta Chapter continued to expand its activities. At the spring meeting, J. Roy Inbody was selected to serve as president during the 1939-1940 school term. Five regular and two honorary members were initiated into the fraternity during the spring of 1939. At the summer initiation, 11 members were added. At the initiation services in December, 1939, eight additional members were included on Beta's growing membership roster.

Discussions at fraternity meetings included: "Business Education in the Junior College" and "Selection of Textbooks and Materials in Commercial Education." During the statewide teachers' meeting at Tulsa, the chapter sponsored a breakfast to which all business teachers were invited. This breakfast was to become an annual affair, but later it was limited to Delta Pi Epsilon members and their guests.

### **Second National Council**

The second National Council was held in Pittsburgh, Pennsylvania, on December 28, 1939. Present at this meeting were: Charles E. Hainfeld, President; James M. Thompson, Vice President; Madeline S. Strony, Secretary; Chapter Delegates, M. Herbert Freeman, Eugene H. Hughes, J. Frances Henderson, Ruby Hemphill, Ruth C. Williams, and Francis V. Unzicker; and Faculty Sponsors, Paul S. Lomax and McKee Fisk.

The actions taken at the 1939 National Council would help to structure and guide national activities for several years in the future:

1. Officers and delegates elected for two years. As a result of a change in the national constitution, national officers and the members of the National Council were to be elected for a period of two years. National officers elected for the 1940-1941 biennium were: McKee Fisk, President; M. Herbert Freeman, Vice President; Ruby Hemphill, Secretary; Francis V. Unzicker, Treasurer; and Eugene H. Hughes, Historian.

2. National committees organized for work. At this 1939 meeting of the Council, four committees were set up to further the work of Delta Pi Epsilon during the 1940-1941 biennium. The Committee on Relations, headed by J. Frances Henderson, was to be in charge of arranging DPE functions at regional and national meetings. This custom has been followed throughout the life of Delta Pi Epsilon. The Committee on Publications, with Dr. Herbert A. Tonne as chairman, had full responsibility and authority to work out the problem of a regular publication for the fraternity. *The Business Education Index (Index)* is one of the publications this committee created and has been with the fraternity since the early years of DPE. The Research Committee, headed by Helen McCormick Johnston, was created to encourage, and approve for publication, research in business education. This committee remains one of the essential committees of Delta Pi Epsilon. The Ritual Committee was asked to consider the revision of the ritual for initiation of new members into the fraternity.
3. National Council specified that the DPE Executive Board was to meet once each year.
4. National Council was to be comprised of the national officers and one representative from each chapter.

### **National Executive Board Sets Early Policies for the Fraternity**

The National Executive Board, as proposed by the National Council meeting in December, 1939, was made up of the national officers and one representative from each chapter. As Dr. Fisk later explained at the National Council meeting in 1941, the function of the Board was to serve as a clearinghouse and to perform duties such as to approve bills and establish policies in a more democratic way. Formerly, decisions had been made by a single officer. As soon as the fraternity became large enough, the character of the Executive Board was changed in order to have a small workable group; as the fraternity grew, not every chapter would have a representative.

The Board for 1940-1941 included the national officers who were: McKee Fisk, President; M. Herbert Freeman, Vice President; Ruby Hemphill, Secretary; Madeline S. Strony, Associate Secretary; Francis V. Unzicker, Treasurer; and Eugene Hughes, Historian. The Chapter representatives included: Herbert A. Tonne (Alpha), James M. Thompson (Beta), and John M. Patterson (Gamma). Since four of the board members were from Beta Chapter, these four persons met several times in the spring of 1940: April 8, April 27, and May 10. These meetings were to lay the groundwork for the full National Executive Board Meeting in December, 1940.

The fourth meeting of the year, with six of the Board members present, was held at the Sherman Hotel, Chicago, on December 27 and 28, 1940. At this meeting, the Publications Committee was given a broader assignment to take care

of all fraternity publications, including *The Business Education Index* edited by Dr. Hughes. It was also noted that Beta Chapter had published for each member of the fraternity the research monograph entitled, *Bibliography Of Research In Business Education, 1920-1940*.

The National Historian was instructed to reconstruct the history of Delta Pi Epsilon since many of the records had been lost. The National Historian was also instructed to compile information for permanent records. It was recommended to the Treasurer at this meeting that a uniform system of keeping the accounts of all the chapters be set up. Continuation of membership in the National Council for Business Education was approved, and six members of Delta Pi Epsilon were nominated for membership on the Administrative Board of the Council: McKee Fisk, D. D. Lessenberry, A. J. Lawrence, Virgil Cheek, Benjamin R. Haynes, and Cecil Puckett. A committee headed by James M. Thompson was appointed to study the matter of honorary members. New chapters were restricted to institutions that were on the approved list of the American Association of Universities.

Committee reports given at this meeting indicated the success of the nationally sponsored activities.

**Committee on Relationships.** Chairman J. Frances Henderson reported that Delta Pi Epsilon meetings had been set up at the National Education Association in July, 1940; the Southern Business Education Association in November, 1940; and the National Commercial Teachers Federation in Chicago in December, 1940.

**Research Committee.** Helen M. Johnston, Chairman, recommended three fraternity-sponsored activities: (1) An annual open research award contest should be organized to encourage and recognize research in graduate work in the field of business education. This award would be given annually for research studies completed during the previous year. The winner, as judged by an Awards Committee appointed by the fraternity, would receive 50 bound copies of his/her work and would have free copies sent to libraries across the country. (2) An index of research studies in progress on business education should be compiled and published each year. (3) A list of possible research problems in business education should be collected by the committee and published so there would be opportunities for coordinated research. The Executive Board approved Recommendations One and Three as stated. Recommendation Two, concerning research in progress, was being done in a similar project sponsored by the National Association of Business Teacher-Training Institutions (NABTTI).

The final meeting of this biennium was held at the Sherman Hotel, December 8, 1941. At this meeting, three members were appointed to study the constitution in order to reword some of the articles and to formulate some new ones.

Several recommendations to the National Council came from this Board meeting: A constitutional amendment requiring the bonding of the treasurer and the auditing of the books; membership in the National Council of Business Education be continued; the Board be authorized to elect an executive secretary who would be required to keep detailed records and to manage the business affairs

under the direction of the Board; the fiscal period begin on January 1; each chapter be asked to limit its honorary membership to not more than one each fiscal year, the privilege to be cumulative; higher standards be set up for the acceptance of new chapters; and the Executive Board be encouraged, and be given discretionary power, to create an annual or biennial Delta Pi Epsilon lectureship.

### **Gamma Chapter Installed in 1940**

Dr. McKee Fisk, while a visiting professor at the University of Pittsburgh during the summer of 1940, stimulated interest in Delta Pi Epsilon among the graduate students in business education. This interest culminated in the installation of Gamma Chapter, the third chapter of Delta Pi Epsilon; Harold Neece, Nina Clover, and Hal Holt assisted Dr. Fisk in the installation services. Dr. D. D. Lessenberry was elected faculty adviser, and the first president of Gamma Chapter was Harley F. Shaefer.

## **The 1940-1941 Biennium McKee Fisk Leads Creative Endeavor**

At the second National Council meeting in Pittsburgh, December 28, 1939, the following national officers were elected for the 1940-1941 biennium: McKee Fisk, President; M. Herbert Freeman, Vice President; Ruby Hemphill, Secretary; Francis V. Unzicker, Treasurer; and Eugene H. Hughes, Historian.

In the February, 1976, issue of *The Delta Pi Epsilon Journal (Journal)*, Dr. Fisk recalled the problems of getting a “national” fraternity under way: “The presidential term of 1939-1941 was the first full term in which the fraternity was ‘national’—with all of two chapters. The major problem was one of marketing—selling the idea of a graduate professional fraternity to those institutions with graduate programs in business education. The council meeting with the national officers . . . convened around a small table at the convention of the National Commercial Teachers Federation and spent most of its time ‘brainstorming’ the idea of how to make DPE national in fact . . . . The specific decisions made by the fraternity were, in retrospect, monumental . . . . The decisions to establish an annual research award, to publish an annual *Business Education Index*, and to have an annual lecture on some important and timely topic were bold decisions, made in faith, considering the financial poverty of the fraternity, especially since all three projects, to have any wide impact, would require publication. . . . The Gregg Publishing Company agreed to publish the *Business Education Index* without charge. . . . South-Western Publishing Company agreed to publish both the research study which was selected for the award . . . and the annual lecture.”

Dr. Fisk listed five reasons for forming a “national” business education fraternity and organizing Beta Chapter of Delta Pi Epsilon “(1) A need was apparent . . . give graduate students a particular identity. (2) It was desirable to bring graduate students . . . together in a less formal way than in class and seminar rooms . . . (3) Many things could be accomplished through a voluntary organization . . .

(4) It multiplied the opportunities for leadership, service, and individual expression, development, and visibility. (5) Finally and most important, a belief that the future leadership of Business Education would come from graduate students—those whose professional commitment induced them to continue their education, thus enlarging their capabilities and opportunities.”

### ***Business Education Index Published***

The first issue of the *Business Education Index* was published in 1940 by a staff headed by Dr. Eugene Hughes. The *Business Education Index* continues to be published annually and has become a treasured resource in business education. (Editor’s note: The *Business Education Index* was discontinued in 2001.)

### **National Council for Business Education**

During this biennium, DPE became a participant in the National Council for Business Education, and six members of DPE were nominated for membership on the Administrative Board of the Council: McKee Fisk, D. D. Lessenberry, A. J. Lawrence, Virgil Cheek, Benjamin R. Haynes, and Cecil Puckett.

### **Research Award**

In the 1940-1941 biennium, the Executive Board approved the Research Committee’s recommendation that an annual research award be given for outstanding research completed during the year and that a list of possible research problems in business education be collected for publication. Several years passed before a list of possible research problems in business education was compiled and published. The 1940-1941 National Executive Board wanted to prepare an annual listing of research studies completed and in progress, but the project was not pursued when the Board learned that NABTTI was already at work on such a listing.

### **First Award to Dr. Hanna**

The first research award was presented to Dr. J Marshall Hanna for his 1940 research, “A Study of Fifty-two Fundamental Issues in Business Education and the Opinions of Fifty-eight Prominent Business Educators Regarding These Issues.” Through financial assistance from South-Western Publishing Company and the cooperation of Oklahoma A & M College, the award-winning study was published as a separate monograph. This practice was to be continued for a number of years.

### **Executive Secretary Proposed**

The idea of an executive secretary for Delta Pi Epsilon was approved by the National Executive Board during the 1940-1941 biennium, and the 1941 National Council also gave approval to the idea.

## **Publishing Companies Help DPE**

The two major publishing companies of business education materials during the early years of Delta Pi Epsilon provided extensive and invaluable publication services. Gregg Publishing Company published *The Business Education Index* each year; and South-Western Publishing Company published the annual lecture and the award-winning research study, as well as other curricular and instructional materials.

## **Ideals of Delta Pi Epsilon**

In the February, 1941, issue of the *Delta Pi Epsilonian*, Dr. Paul S. Lomax discussed the professional ideals of Delta Pi Epsilon:

“Unlimited are the great opportunities of the members of Delta Pi Epsilon to advance professional standards and ideals of business education as an important integral phase of the entire program of public and private American education. To the distinguished members of this honorary graduate fraternity who must have a degree of excellence which represents the equivalent of that required in the membership of our best national, general, educational fraternities, we may rightly look for an especially high order of achievement. This accomplishment is to be sought along at least three lines; in keeping with the ideals of our fraternity:

1. *Scholarship.* This is to express itself not merely in a mastery of the teaching exercises through which we seek to stimulate, direct, and evaluate the learning of our students, but also in the mastery of appreciation and understanding of these students themselves, in order that they may be inspired and equipped to realize most helpful and happy lives, individually and socially.
2. *Cooperation.* This is to seek to improve our ability, in unselfish cooperation with one another, to aid in the common advancement of the profession of business education. Productive and practical scholarship must be attained with others through the production of superior yearbooks, quarterlies, magazines, contributions to convention programs, and the like, if a true profession is to evolve and endure.
3. *Leadership.* This will characterize our membership if we constantly endeavor to improve our individual and group scholarship, based on soundly interpreted facts in the experiences of business and school; and to improve ourselves in our cooperative leadership abilities. True leadership is to be won in seeking first and always to serve the best good of those whom we seek to lead, rather than primarily to promote the interest of self.

“The professional interests of Delta Pi Epsilon encompass the whole of business education in relation to the entire fields of American business and American education. Its membership must not center its first consideration upon itself but must always think in terms of the common good and advancement of all our business teachers



and of all students who pursue courses in business education. The best good of all ultimately is the best good of any one individual or any special group of individuals.”

### **Third National Council**

The third meeting of the legislative body of Delta Pi Epsilon was held at the Sherman Hotel, Chicago, December 28, 1941. At that time, the National Council, according to the terms of the constitution, was comprised of the national officers and no fewer than 10 delegates elected by the members of the fraternity. Each chapter was represented by an equal number of delegates. The Council members at the 1941 meeting were: McKee Fisk, President; M. Herbert Freeman, Vice President; Ruby Hemphill, Secretary; Francis V. Unzicker, Treasurer; Eugene Hughes, Historian; and Chapter Delegates Milton C. Olson, Mabel E. Ellis, Clare M. Betz, George Woodmore, Helen Sittel, James M. Thompson, Frances A. Clark, Jon Szabo, and John A. Patterson. 1941 Council meeting:

1. An annual lectureship was established, the lecture to be published each year. The annual lecture was given each year for the next 15 years before it was discontinued for a number of years. In 1957, Dr. Lomax gave the final yearly lecture in this series.
2. The *Business Education Index* was to be continued as a publication of the fraternity.
3. Higher standards were proposed for admission of new chapters. One of the requirements for a DPE chapter to be approved in 1940-1941 was that the petitioning university had to be a member of the American Association of Universities.

## **The 1942-1943 Biennium**

### **D. D. Lessenberry Is National President During War Years**

#### **National Executive Board**

At the 1941 National Council meeting, the following officers were elected to serve for the 1942-1943 biennium: D. D. Lessenberry, President; Peter L. Agnew, Vice President; Ruth Williams, Secretary; James M. Thompson, Treasurer; and Icie B. Johnson, Historian. Milton C. Olson, Ruby Hemphill, and Frances Clark were named as representatives at large.

During the 1942-1943 biennium, Dr. Thompson entered military service, and Dr. Earl Dickerson was appointed National Treasurer. Dr. Tonne and Dr. Hughes relinquished their committee assignments because they were engaged in activities connected with World War II. Most of the fraternity's business was conducted by mail during this biennium because travel was not permitted for purposes other than those activities directed toward the war effort.

During this biennium, Dr. Dickerson prepared a standard set of forms for record keeping by all chapters. The use of these forms became effective January, 1943.

In December, 1943, the National Executive Board recommended that a committee be named to prepare a manual of procedures and another committee be named to prepare a rituals manual.

### **Research Awards**

Two research awards were given during the 1942-1943 biennium. T. James Crawford's 1941 study, "Frequency and Use of Gregg Shorthand Prefixes and Suffixes," received the award in 1942, the second such award to be given. The 1943 research award was presented to Dr. Dorothy C. Finkelhor for her 1942 study, "Occupational Adjustment of Beginning Workers."

### **Bibliography of Research**

In 1943, *Bibliography Of Research In Business Education, 1920-1940*, was published. This publication was prepared by Beta Chapter members at Oklahoma A & M College.

### **Annual Lectures**

The first annual lecture was given at Eastern Business Teachers' Association (EBTA) in Spring, 1943, by Dr. Walter C. Eells on the topic, "Up-Grading and Out-Grading in Business Education." The second lecture was presented by Dr. J. B. Edmonson, Dean, School of Education, University of Michigan, on the topic, "Conservation of Youth Through Expanding Educational Service." These lectures were published by South-Western Publishing Company, and 1,200 copies were given to the fraternity for distribution.

### **New Chapters**

Four new chapters were installed during the 1942-1943 biennium: DELTA CHAPTER, University of Cincinnati, was installed on May 10, 1942, with Dr. Ray G. Price as sponsor; EPSILON CHAPTER, Boston University, was installed on May 21, 1942, with Professor Atlee L. Percy as chapter sponsor; ZETA CHAPTER, Women's College, University of North Carolina, was installed June 23, 1942, with Dr. Vance T. Littlejohn as chapter sponsor; and ETA CHAPTER, University of Denver, was installed on August 10, 1942, as the seventh chapter of Delta Pi Epsilon, with Dr. Cecil Puckett as the chapter sponsor.

### **Fourth National Council**

The fourth National Council meeting was held at the Statler Hotel, Detroit, on December 30, 1943. In addition to the national officers, the 14 delegates from the seven chapters were: Gladys Seale, William Polishook, Helen M. Johnston, Francis V. Unzicker, Elsie Garlow, Helen Widener, Howard Nelson, Paul Cutshall,

Dorothy Murphy, Hilda M. McNally, Elizabeth Cummings, Jeannette Sievers, Mary Sufana, and Cécil Puckett.

At the 1943 Council meeting: (1) A pocket-sized edition of the constitution was approved; and (2) approval was given for the publications, *Business Education Series*, *Composite Index*, and *Index of Teaching Materials*.

## **The 1944-1945 Biennium**

### **Paul S. Lomax Becomes President for the Remaining War Years**

Almost eight years after the founding of Delta Pi Epsilon, Dr. Lomax was elected national president at the 1943 National Council meeting.

#### **National Executive Board**

Officers elected to serve during the 1944-1945 biennium were: Paul S. Lomax, President; Helen M. Johnston, Vice President; Ruth C. Williams, Secretary; Earl S. Dickerson, Treasurer; and William B. Logan, Historian.

This biennium saw the work of the fraternity carried forward to set the stage for the expansion that would come after the end of World War II. During 1944-1945, total membership reached 894. A pamphlet entitled "Facts About Delta Pi Epsilon" was printed and distributed in 1945. Three publications were recommended for DPE in the future: *Business Education Research Series*, *National Newsletter*, and *Abstracts Of Research Studies*.

#### **Research Awards**

Dr. Donald C. Fuller's 1943 study, "Reading Factors in Typewriting," received the 1944 DPE Research Award. Dr. S. J. Turille received the 1945 Award for his study, "*The Achievement of Minimal Essentials of Consumer Business Information in Vocational Commercial Courses*."

#### **Annual Lectures**

The 1944 annual lecture delivered by Professor D. L. Prickett, Indiana University, was entitled "The Collegiate School of Business in American Education." The 1945 lecture, "Services of the United States Office of Education to Business Education," was presented by Dr. J. C. Wright, Assistant Commissioner of Education, U.S. Office of Education.

#### **New Chapters**

Two new chapters were installed in the 1944-1945 biennium: THETA CHAPTER was installed on August 6, 1945, at Indiana University, and Dr. H. G. Enterline was selected as the faculty sponsor; and IOTA CHAPTER was installed at Syracuse University on September 22, 1945, with Professor O. R. Wessels as sponsor.

### **Fifth National Council**

The fifth National Council meeting was held December 27-28, 1945, at the Netherland-Plaza Hotel, Cincinnati. Five officers, 17 delegates from nine chapters, and four sponsors attended this meeting.

## **The 1946-1947 Biennium Earl S. Dickerson Leads in Post-war Expansion**

### **National Executive Board**

The National Council, at the meeting in December 1945, elected officers for the 1946-1947 biennium as follows: Earl S. Dickerson, President; William B. Logan, Vice President; Elsie Garlow, Secretary; J. Edward Silverthorn, Treasurer; Mary Sufana, Historian; and Paul S. Lomax, Executive Board Member.

### **Research Awards**

The DPE Research Award for 1946 was presented to Dr. William M. Polishook for his 1945 study, "The Effectiveness of Teaching Business Arithmetic as a Separate Subject and as an Integrated Part of Junior Business Training." The 1947 Research Award was presented to Dr. Arnold E. Schneider for his 1946 study, "Statistical Study of the Learning Ability of Men, as It Relates to Age, Education, and Intelligence with Particular Reference to Bookkeeping and Clerical Procedures."

### **Annual Lectures**

The fifth annual lecture was delivered by Dr. Frank S. Endicott, Northwestern University, on the topic, "The Guidance and Counseling of Business Education Students." The sixth annual lecture was "Criteria for Sound Research in Business Education" by Carter V. Good, Dean, School of Education, University of Cincinnati.

### **New Chapters**

New chapters installed during the 1946-1947 biennium were: KAPPA CHAPTER, July 23, 1946, at the University of Michigan; LAMBDA CHAPTER, July 27, 1946, at Northwestern University; MU CHAPTER, August 20, 1946, at the University of Tennessee; NU CHAPTER, July 19, 1947, at the University of Kentucky; XI CHAPTER, July 24, 1947, at the University of Florida; and OMICRON CHAPTER, August 2, 1947, at the State University of Iowa.

### **Membership**

Membership in Delta Pi Epsilon totaled 1,330 after the six new chapters were installed during the 1946-1947 biennium, and the number of chapters now stood at 15.

## **Sixth National Council**

The National Council meeting for the 1946-1947 biennium was held at Indiana University, on January 30-31, 1948. Each of the 15 chapters was represented by a Council delegate, and all the officers were present. This meeting marked the first time that the Council met at a time other than at National Business Teachers Association (NBTA), and it was the first time that an individual chapter was placed in charge of the arrangements for the meeting. Theta Chapter sponsored the 1946-1947 meeting. At this January, 1948, meeting, the National Council delegates decided to send to each chapter a copy of the *Manual of Procedures* and to ask chapters to make suggestions for revision and modifications. The Council also decided to duplicate and distribute copies of the constitution, especially to national officers, Council delegates, chapter officers, and chapter sponsors. The Council approved a quarterly publication or a newsletter that would include reports from chapters. Three standing committees were to serve in the upcoming biennium: Research Award Committee, *Business Education Index*, and Executive Secretary Committee.

## **The 1948-1949 Biennium**

### **Elvin S. Eyster Calls for Quality, Service, Scholarship**

## **National Executive Board**

The national officers for the 1948-1949 biennium were: Elvin S. Eyster, President; Elsie G. Garlow, Vice President; Mary Sufana, Secretary; Robert A. Lowry, Treasurer; W. J. Masson, Historian; and Earl S. Dickerson, Past President.

## **Research Awards**

The DPE Research Award in 1948 was presented to Dr. Alton B. Parker Liles for his 1947 study, "Some Factors in the Training of Clerical Workers." Dr. Dorothy H. Veon received the Research Award in 1949 for her 1948 independent study, "The Relationship of Learning Factors Found in Certain Modern Foreign Language Aptitude Tests to the Prediction of Shorthand Achievement in College."

## **Annual Lectures**

Dr. Hamden L. Forkner delivered the annual lectures for both 1948 and 1949. His 1948 address was "A Challenge to Curriculum Planners," and the 1949 topic was "Curriculum Planning in Business Education."

## **New Chapters**

PI CHAPTER was installed at Ball State Teachers College on July 9, 1948. RHO CHAPTER, The Ohio State University, was installed on July 16, 1948. SIGMA CHAPTER, University of Oklahoma, was installed on April 29, 1949.

## **Seventh National Council**

The National Council meeting for the 1948-1949 biennium was held on the campus of the University of Kentucky, January 12-14, 1950. At this meeting, and at Executive Board meetings during the biennium, several specific actions were taken that would affect the fraternity for some year to come.

1. The President and the Executive Board were empowered to proceed with the development of plans for an executive secretary. A part-time executive secretary was to be appointed to begin duties on January 1, 1952. This plan was subject to approval by the chapters.
2. New criteria for qualifying for a chapter of Delta Pi Epsilon were set up. The number of petitioners was increased from 10 to 20. A visiting committee would prepare a report and send it to the chapters, and the chapters would vote on admission of the new group.
3. Delegates' terms were lengthened to three years to permit more continuity on the Council. One-third of the delegates would be replaced for each biennium. This procedure was to become effective in the 1950-1951 biennium.
4. The period of time of paying dues before becoming a life member was extended to 30 years, effective July 1, 1950.
5. The "Facts" booklet and the *News Letter* were to be discontinued.
6. A Committee on Planning and Coordination of Research and Service Projects was set up.
7. The *Manual of Procedures* was revised before being duplicated and distributed.
8. The "Business Education Research Series," from Oklahoma A & M College, was to be continued as a fraternity publication.
9. *Bibliography Of Research Studies In Business Education*, 1941-1948, was published for Delta Pi Epsilon as the Indiana Business Studies: Study No. 32, School of Business, Indiana University, May, 1949.

The biennium of 1948-1949 was a period of assessment and evaluation of the fraternity's purposes and activities. Dr. Eyster expressed the view that one of the major issues of the biennium was whether the fraternity was "... really to live up to the objectives and purposes as intended by its founders or whether it is content to become primarily an honorary organization initiating new members who are qualified and engaging in enjoyable social affairs."



## **The 1950-1951 Biennium**

### **M. Herbert Freeman Adds to the Momentum**

#### **National Executive Board**

National officers elected for the 1950-1951 biennium were: M. Herbert Freeman, President; John M. Trytten, Vice President; Gladys Bahr, Secretary; Robert A. Lowry, Treasurer; Rowena Wellman, Historian; and Elvin S. Eyster, Past President.

#### **National Research Conference**

A research conference at Clear Lake Camp, near Battle Creek, Michigan, was organized and planned by the Committee on the Planning and Coordination of Research and Service Projects, a committee created at the January, 1950, National Council meeting. The "Good Classroom Practices" project grew out of this conference, as did the "Annual Listing Of Outstanding Articles in the Field of Business Education" and "A Handbook of Desirable Chapter Activities." Other projects that were proposed at this meeting were "Abstracts of Research" and "Evaluative Criteria." The "Handbook of Desirable Chapter Activities" was subsequently completed and distributed to the chapters before the meeting of the 1951 National Council.

#### **Research Awards**

The 1950 DPE Research Award was presented to Dr. Charles B. Hicks for his 1949 study, "Technical Business Vocabulary of General Business Education." In 1951, the award was received by Dr. Herbert A. Hamilton whose study, "Relationship of Success in Beginning General Clerical Occupations to Achievement in the National Business Entrance Tests," was completed in 1950.

#### **Annual Lectures**

The annual lecture in 1950 was given by Dr. McKee Fisk on the topic, "Framework for Business Education." In 1951, the annual lecture was by G. Derwood Baker, who spoke on "Business Education and Economic Education."

#### **New Chapters**

Four new chapters were installed during this biennium: TAU CHAPTER, Columbia University, in August, 1950; UPSILON CHAPTER, University of Mississippi, in May, 1951; PHI CHAPTER, University of Minnesota, in June, 1951; and CHI CHAPTER, Pennsylvania State University, in July, 1951. This biennium marked the first time that visiting committees were used to gather data about the petitioning institutions and to write and submit reports to the national officers. On the basis of these reports, chapters were asked to vote on the admission of new chapters.

### **Other Activities**

The Committee on Relations became the Interchapter Relations Committee in 1950. This committee has promoted interchapter activities since the early days of Delta Pi Epsilon.

In May 1951, Delta, Theta, Nu, Pi, and Rho Chapters cooperated in compiling a 17-page mimeographed booklet entitled "Bibliography of Free and Inexpensive Teaching Materials in Business Education."

Dr. M. Herbert Freeman prepared a preliminary report for the Commission on Basic Business entitled *Basic Business for Everyday Living* published as Monograph 74 by South-Western Publishing Company.

### **Eighth National Council**

The 1951 National Council meeting was held at Northwestern University, November 7-10, 1951. Twenty-two chapter delegates were present, in addition to the national officers and sponsors.

At the close of the 1950-1951 biennium, Delta Pi Epsilon had 22 chapters and 2,015 members.

## **The 1952-1953 Biennium J Marshall Hanna Starts a New Era**

### **National Executive Board**

National officers for 1952-1953 were: J Marshall Hanna, President; Earl Nicks, Vice President; Mary E. Connelly, Secretary; Theodore Woodward, Treasurer; Dorothy H. Veon, Historian; and M. Herbert Freeman, Past President.

### **First National Executive Secretary**

The first appointed DPE Executive Secretary was Dr. Charles B. Hicks, who was employed on August 15, 1952. The National Office was a reality at last. The Ohio State University served as the location for the first National Office.

Beginning December 1, 1952, a monthly report was sent from the Executive Secretary to chapter officers, chapter sponsors, chapter editors, chapter delegates, national officers, past presidents, and chairmen of national committees and projects.

### **Research Awards**

The 1952 Research Award was received by Dr. F. Wayne House for his study entitled "Factors Affecting Student Achievement in Beginning Bookkeeping in the High School." The 1953 Research Award was presented to Dr. James Stuart for his study, "A Scale for Determining the Attitudes of High School Business Education Students Toward Certain Aspects of Office Work."

## **Annual Lectures**

The two annual lectures for this biennium were: "Curriculum Trends at Mid-Century," by Dr. Henry Harap, Professor of Education, George Peabody College for Teachers, and "What's Ahead for the American Economy?" by Dr. John Langum, President of Business Economics Inc. These lectures were published by South-Western Publishing Company.

## **Publications and Projects**

"Outstanding Articles in the Field of Business Education" was published in the May, 1952, issue of the *Journal of Business Education*. "Good Classroom Practices in Business Education" was completed as a Delta Pi Epsilon project. The development of a list of abstracts of all research studies completed in the field of business education in 1952, and for every succeeding year, was started under the leadership of McKee Fisk. This biennium saw the start of the project, "Criteria for Developing Secondary Business Education."

## **Committee on Coordination and Integration of Research in Business Education**

The DPE National Executive Board accepted a proposal for the organization of the Committee on Coordination and Integration of Research in Business Education (CCIRBE). This Committee was to be comprised of two members from each of three organizations: Delta Pi Epsilon, National Association of Business Teacher-Training Institutions, and the Research Division of United Business Education Association (UBEA). DPE's first assignment was the preparation of research abstracts that might later be published by UBEA as a research yearbook.

## **New Chapters**

New chapters installed during this biennium were: PSI CHAPTER, University of Southern California, in March, 1953; and OMEGA CHAPTER, George Peabody College for Teachers, in July, 1953.

## **Ninth National Council**

The ninth National Council meeting was held at Haven Hill Lodge, near Pontiac, Michigan, on October 7-9, 1953. Present at this meeting were 24 chapter delegates and the national officers. At the end of the 1952-1953 biennium, DPE membership was 3,399 and the fraternity had 24 chapters.

## **The 1954-1955 Biennium**

### **Herbert A. Tonne Brings the First Twenty Years to a Close**

#### **National Executive Board**

The national officers for 1954-1955 were: Herbert A. Tonne, President; Theodore Woodward, Vice President; Rosemarie Scavariel, Secretary; Frank M. Herndon, Treasurer; Dorothy H. Veon, Historian; J Marshall Hanna, Past President; and Charles B. Hicks, Executive Secretary.

#### **Research Awards**

Recipients of the DPE Research Awards were: Dr. Vern Frisch in 1954 for his 1952 study, "An Analysis of Clerical Business Typing Papers and Forms for the Improvement of Instructional Materials," and Dr. Loren Carmichael in 1955 for "Teacher-Pupil Planning in Business Education," completed in 1954.

#### **Annual Lecture**

The 1955 annual lecture was "Implications of the Core Curriculum to Business Education," delivered by Dr. Harold Alberty, The Ohio State University, Professor of Education. Dr. Alberty had been scheduled to present the 1954 lecture, but unfavorable weather had prevented him from attending the meeting.

#### **New Chapters**

Two new chapters were installed during the 1954-1955 biennium. ALPHA ALPHA CHAPTER was installed on August 12, 1954, at Colorado State College of Education, Greeley. ALPHA BETA CHAPTER was installed on April 16, 1955, at the University of Illinois.

#### **Projects**

The Committee on Planning and Coordination of Research and Service Projects identified four projects to be undertaken in the future.

1. Recruitment of business teachers.
2. Compilation and evaluation of free and inexpensive business education materials.
3. A casebook that could be used in teacher training or office training programs.
4. Validation of business entrance tests.

DPE members can look back and remember that from these proposed projects came "Business Teaching as a Career," Monograph 94 entitled *Free and Inexpensive Business Education Materials* published by South-Western Publishing Company,

“The Business Teacher Learns from Cases“ (a casebook of teaching problems), and a revision of the National Business Entrance Tests.

### **Tenth National Council**

The tenth National Council meeting was held on November 10-12, 1953, at McCormick's Creek State Park, near Bloomington, Indiana. Prior to the Council meeting, Dr. Tonne, Dr. Hicks, and the Executive Board had asked the chapter delegates to serve on the committees that would function during the deliberations of the Council. To provide guidance to the committees, reactions to key issues and problems had been solicited from the chapters prior to the Council meeting. During this biennium, the constitution was completely revised.

### **Closing 20 Years**

The 1954-1955 biennium brought to a close the first 20 years of Delta Pi Epsilon. Membership in DPE now stood at 3,757. The fraternity was ready to celebrate its twentieth anniversary, and there were 26 chapters to share in this celebration. Who would have foreseen that fateful spring of 1936 that in the short period of two decades Delta Pi Epsilon would grow from a single chapter to 26 and from 100 original members to nearly 4000? The dream of Dr. Lomax and the members of the Commercial Teachers Club of New York University was a reality beyond all expectations.

## **The 1956-1957 Biennium**

### **Theodore Woodward Begins the Second Twenty Years**

Looking back through the pages of history, it was clearly evident that the 1956-1957 biennium was to be historic in several ways. Three items, in particular, deserve mention. During this biennium, Delta Pi Epsilon observed its twentieth anniversary, the concept of a Delta Pi Epsilon journal was introduced, and groundwork was laid for the organization of the Policies Commission for Business and Economic Education.

### **National Executive Board**

The national officers serving the fraternity during the 1956-1957 biennium were: Theodore Woodward, President; Dorothy H. Veon, Vice President; Ramon P. Heimerl, Secretary; Frank M. Herndon, Treasurer; Evelyn Babb Davis, Historian; Herbert A. Tonne, Past President; and Charles B. Hicks, Executive Secretary.

### **Research Awards**

The 1956 annual DPE Research Award was presented to Dr. John A. Dettman for his 1955 study, “Factors Related to Success in Teaching the Business Subjects in the Secondary School.” In 1957, the Research Award was presented to Dr.

T. James Crawford for his 1956 study, "The Effect of Emphasizing Production Typewriting Contrasted with Speed Typewriting in Developing Production Typewriting Ability."

### **Annual Lectures**

J. Gordon Dakins, Executive Vice President of the National Retail Dry Goods Association, delivered the 1956 annual lecture at the Southern Business Education Association in Asheville, North Carolina, on November 23, 1956. The title of Dakin's address was "Retailing in Our Economy and Its Implications for Education."

Tau Chapter was selected to sponsor the annual banquet and lecture in 1957 at the convention of the Eastern Business Teachers Association. Dr. Paul S. Lomax was chosen to be the speaker on "Reflections on Business Education," at the twentieth anniversary Delta Pi Epsilon annual banquet. The banquet was held at the Men's Faculty Club of Columbia University.

Since the 1957 National Council voted to discontinue the Delta Pi Epsilon lecture series, it was indeed fitting that Dr. Lomax should give the final lecture.

### **New Chapters**

Three new chapters were installed in the 1956-1957 biennium: ALPHA GAMMA CHAPTER, University of Houston, June 26, 1956, with Carlos Hayden as faculty sponsor; ALPHA DELTA CHAPTER, Emporia (Kansas) State Teachers College, August 17, 1957, with Raymond B. Russell as faculty sponsor; and ALPHA EPSILON CHAPTER, North Texas State College, October 26, 1957, with Vernon V. Payne and Ruth I. Anderson as faculty sponsors.

### **Membership**

During this biennium, membership in the fraternity, including honorary and life members, totaled 3,400.

### **Publications**

Dr. Charles B. Hicks, Executive Secretary, reported that the following publications had been distributed during the biennium: The Executive Secretary's monthly newsletter; "Business Teaching as a Career"; the *Business Education Index* issues for the biennium; the 1954 and 1955 Research Awards; annual lectures by Albert and Dakins; Monograph 94, *Free and Inexpensive Business Education Materials*; the 1955 and 1956 Research Summaries prepared by Psi Chapter and published in the *National Business Education Quarterly*; "You As a Secretary"; "History of Delta Pi Epsilon"; "Let's Educate Youth"; *The Delta Pi Epsilon Journal (Journal)* Volume I, Number 1, 1954; and "The Business Teacher Learns from Cases."



### ***The Delta Pi Epsilon Journal***

In 1957, the National Executive Board voted to publish one issue of a Delta Pi Epsilon journal on an experimental basis. Peter G. Haines, Michigan State University, was elected to serve as editor for this experimental issue. At the 1957 National Council, Dr. Haines presented a detailed proposal for the continued publication of *The Delta Pi Epsilon Journal*.

After a heated debate, the National Council finally decided to continue the *Journal* for another four issues during the 1958-1959 biennium. The National Executive Board was specifically authorized to spend up to \$1,000 if necessary from surplus funds for publications and service projects.

### **Eleventh National Council**

The 1957 National Council meeting was held at the Medical Center, Indiana University, Indianapolis, on November 7-9, 1957. Twenty-nine chapters were represented at this Council meeting.

At the National Council meeting, action was taken directing the Executive Board to appoint a director of service projects and a director of publications in order to give the Vice President more time to work on chapter development. A new organization chart was adopted incorporating these changes.

The National Council voted to discontinue the annual lecture series and to continue publication of *The Delta Pi Epsilon Journal* for four more issues.

## **The 1958-1959 Biennium**

### **Dorothy H. Veon Is President and Ruth I. Anderson Becomes New Executive Secretary**

### **National Executive Board**

The National Executive Board for the biennium, elected at the 1957 National Council meeting, was comprised of: Dorothy H. Veon, President; Frank M. Herndon, Vice President; Anthony Hantjis, Secretary; John Binnion, Treasurer; Irene Place, Historian; Theodore Woodward, Past President; and Ruth I. Anderson, Executive Secretary.

### **Research Awards**

The recipient of the 1958 DPE Research Award was Dr. Robert M. Kessel for his 1956 Critical Requirements for Secondary School Business Teachers Based Upon an Analysis of Critical Incidents." In 1959, the Research Award recipient was Dr. Herbert M. Jelley for his 1958 study, "A Measurement and Interpretation of Money Management of Twelfth-Grade Students."

### **New Chapters**

Four new chapters were installed in the 1958-1959 biennium: ALPHA ZETA CHAPTER was installed on January 25, 1958, at Temple University, Pennsylvania, with

Dr. William M. Polishook as sponsor; ALPHA ETA CHAPTER, University of Wisconsin-Madison, was installed on July 23, 1958, with Dr. Russell J. Hosler as faculty sponsor; ALPHA THETA CHAPTER, University of Texas, Austin, was installed on June 25, 1959, with Dr. Faborn Etier as sponsor; and ALPHA IOTA CHAPTER, University of Colorado, was installed on December 12, 1959, with Helen Borland as sponsor.

### **Membership**

At the beginning of 1959, DPE had 5,339 members, including 94 honorary members, 605 life members, 2,945 current members, 1,099 nominal members, and 591 delinquent members. Adding the 405 initiates for 1959, the total membership at the end of the biennium was 5,744.

### ***The Delta Pi Epsilon Journal***

One of the most important actions taken by the National Council at Gatlinburg in 1959 was the establishment of *The Delta Pi Epsilon Journal* as a permanent publication. Dr. Peter G. Haines served as editor of *The Delta Pi Epsilon Journal*, and Dr. Earl Dvorak and Dr. Leonard J. West were associate editors.

### **Policies Commission for Business and Economic Education**

An important development during this biennium was the formation of the Policies Commission for Business and Economic Education, which was a joint venture with the United Business Education Association. The following persons were appointed to represent DPE on the first Policies Commission: Theodore Woodward; Elvin S. Eyster; Herbert A. Tonne; and J Marshall Hanna. In addition to these four representatives and the four persons from UBEA, the executive secretaries of DPE and of UBEA and the presidents of these two organizations served on the Commission in an ex-officio capacity.

### **Publications**

Publications for the biennium included the following: "Reflections on Business Education," by Paul S. Lomax, the last lecture in the DPE annual lecture series, published by South-Western Publishing Company; *Business Education Index*, with Louis C. Nanassy as editor, published by Gregg Division of McGraw-Hill Book Company; two national newsletters by the National Executive Secretary; the Research Summaries, published in the Fall issue of the *National Business Education Quarterly*; four issues of *The Delta Pi Epsilon Journal*; the "Film Evaluation Manual"; and "Desirable Chapter Activities." In addition, "Business Teaching as a Career" was reprinted.

### **Service Projects**

The Director of Service Projects, E. C. McGill, reported that during the biennium the revision of "Desirable Chapter Activities" was completed. Three

administrative projects were initiated by the National Executive Board: “Handbook for Chapter Sponsors,” “Handbook for Petitioning and Installing New Chapters,” and “Handbook for National Officers.”

During the biennium, chapter institutes were held in conjunction with regional conventions. The chapter institutes were designed to acquaint sponsors and presidents with national service projects and publications and other activities, obtain from local chapters ideas that would be beneficial to the national organization, and exchange ideas among chapters for programs and other activities.

### **Twelfth National Council**

The twelfth National Council meeting was held at the Riverside Hotel, Gatlinburg, Tennessee, on November 5-7, 1959.

## **The 1960-1961 Biennium Frank Herndon Serves During the Silver Anniversary**

### **National Executive Board**

The following national officers served the fraternity during the 1960-1961 biennium: Frank M. Herndon, President; Robert A. Lowry, Vice President; Mary B. Bates, Secretary; John Binnion, Treasurer; Dorothy Veon, Past President; Irene Place, Historian; and Ruth I. Anderson, Executive Secretary.

### **Silver Anniversary Convention**

On Saturday and Sunday, November 11 and 12, 1961, Delta Pi Epsilon convened at the Hotel Pick-Georgian in Evanston, Illinois, for a Silver Anniversary Convention. The Convention Planning Committee was headed by Theodore Woodward. Four events were featured: The thirteenth National Council meeting; the National Research Conference; the Silver Anniversary Reception and Banquet; and the Silver Anniversary Luncheon to honor chapter sponsors. President Frank M. Herndon was in charge of the National Council meeting, and Ray G. Price, Director of Research and Service Projects, was in charge of the Research Conference. The theme for the Convention was “New Images for Business Education.”

The two principal addresses were woven around the three ideals of Delta Pi Epsilon: Scholarship, Leadership, and Cooperation. On Saturday morning, Dr. Willard Goslin, George Peabody College for Teachers, spoke on “The Development of Leadership in Education.” Saturday afternoon, Dr. Lawrence Coolidge, Dean, School of Business, University of Colorado, spoke on “The Goals of Business Education in a Time of Reappraisal.”

At the Silver Anniversary banquet on Saturday evening, Dr. Paul S. Lomax spoke on “New Images for Delta Pi Epsilon.” Former national presidents of Delta Pi Epsilon were honored, and the principal convention speakers were initiated as honorary members in an initiation ceremony conducted by Theta Chapter.

Sunday morning was devoted to a panel discussion on the topic, "Cooperation for Better Business Education." The Convention closed with the luncheon to honor chapter sponsors.

### **New Chapters**

Two new chapters were installed in the 1960-1961 biennium: ALPHA KAPPA CHAPTER, San Francisco State College, November 12, 1960, with William Winnett as sponsor; and ALPHA LAMBDA CHAPTER, Michigan State University, July 20, 1961, with Peter Haines as sponsor. The number of chapters had reached 35.

### **Research Awards**

The 1960 DPE Research Award was presented to Dr. Dorothy E. Crunk for her study "Guiding the Teacher Trainee's Development of the Qualifications of an Effective Teacher--with Special Applications to the Business Teacher," completed in 1959. Dr. Mildred C. Hillestad received the 1961 Research Award for her 1960 study, "Factors Which Contribute to the Difficulty of Shorthand Dictation Materials."

### **Membership**

The total dues-paying members had increased to 3,169 by November 1, 1961, for a total of 6,890, including honorary, nominal, and delinquent members.

### **Publications**

In February, 1961, the Policies Commission for Business and Economic Education issued its first brochure entitled "A Proposal for Business Economic Education for American Secondary Schools." Over 50,000 copies were distributed to members of UBEA and superintendents of schools, high school principals, and school board members. In May 1961, the Commission released its second publication, "This We Believe About Business Education in the High School." Members of the Commission included Hamden L. Forkner, Chairman; S. Joseph DeBrum; Elvin S. Eyster; J Marshall Hanna; Dorothy L. Travis; Herbert A. Tonne; Theodore Woodward; and Theodore Yerian. Ex-officio members were Gladys Bahr, Frank M. Herndon, Ruth I. Anderson, and Hollis Guy.

Other publications distributed during this biennium were *Business Education Index*, "Film Evaluation for Business Education, Volume II," "Chapter Organizational Manual for New Chapters," "Handbook for National Officers," "Handbook for Chapter Sponsors," "Ninety-Nine Business Education Terms Defined," "Questions to Be Answered Through Research in Business Education," "Bibliography of Teaching Materials in Business Education," "Summaries of Studies and Research in Business Education—1960" for the National Business Education Quarterly, and five issues of *The Delta Pi Epsilon Journal*. Dr. Peter G. Haines served as editor for

the *Journal*, and Dr. Louis C. Nanassy served as editor for the *Index*. "Facts About Delta Pi Epsilon" was updated in a Silver Anniversary Edition, and one silver-covered issue of *The Delta Pi Epsilon Journal* was published as a commemorative issue of the twenty-fifth anniversary of Delta Pi Epsilon.

### **Thirteenth National Council**

The thirteenth National Council meeting was held at the Pick-Georgian Hotel, Evanston, Illinois, on November 9-10, 1961.

## **The 1962-1963 Biennium**

### **Robert A. Lowry Launches the Second Twenty-Five Years and John E. Binnion Becomes Third Executive Secretary**

#### **National Executive Board**

The National Executive Board for the 1962-1963 biennium was: Robert A. Lowry, President; Irene Place, Vice President; Elizabeth T. Van Derveer, Secretary; John W. Rau, Jr., Treasurer; Carol Ostness, Historian; Frank M. Herndon, Past President; and John E. Binnion, Executive Secretary.

#### **Research Awards**

The recipient of the 1962 DPE Research Award was Dr. Charles Frederic Kunsemiller III for his 1961 study, "Recognized Educational Needs of Independent Retail Store Owners in Selected Cities in California." Dr. A. Donald Beattie received the 1963 Research Award for his study, "Relationships Between High School Pupils' Information and Attitudes Toward Personal Finance," completed in 1962.

#### **Other Research Activities**

Five research projects were proposed for the biennium. Two of these projects, "Implications of Research for Teaching Bookkeeping" and "Implications of Research for Teaching Shorthand," were under way by the end of the biennium. The other three, "Implications of Research for Teaching General Business," "Office Machine Survey," and "Status of Business Education," were either in the pilot study stage or had not yet been started.

During this biennium, Delta Pi Epsilon received a gift of \$1,000 from South-Western Publishing Company. From a long list of possible uses for the gift, decision was made to use the money to conduct research institutes. Sponsoring these research institutes, of course, had to be left for future bienniums.

#### **New Chapters**

Two new chapters were installed during the biennium: ALPHA MU CHAPTER, State University of New York at Albany, was installed on December 7, 1963; and

ALPHA NU CHAPTER, University of North Dakota, was installed on December 14, 1963. The total number of chapters was 37.

### **Membership**

Delta Pi Epsilon memberships during this biennium rose to an all-time high of 7,892, including 1,017 life members, 3,970 active members, 122 honorary members, 2,426 nominal members, and 357 demit, deceased, or transfer members.

### **Publications**

Publications during this biennium included *The Delta Pi Epsilon Journal*; *Business Education Index*; "Summaries of Studies and Research in Business Education" appearing in the *National Business Education Quarterly*; South-Western Publishing Company's Monograph 95 entitled *Improving Research in Business Education*; Research Bulletin No. 2 entitled *Implications of Research for Teaching Typewriting*; "The Counselor and Business Education," a publication of the Policies Commission for Business and Economic Education; and "Proceedings" of the Delta Pi Epsilon Silver Anniversary Convention.

In addition, a "Handbook for Interchapter Relations Directors" was prepared by Cecilia A. Hopkins, Director of Interchapter Relations for the biennium.

### **Fourteenth National Council**

The fourteenth National Council meeting was held at the Riverside Hotel, Gatlinburg, Tennessee, November 7-9, 1963.

## **The 1964-1965 Biennium Ruth I. Anderson Advocates Research**

### **National Executive Boards**

National officers for the 1964-1965 biennium were: Ruth I. Anderson, President; Ramon P. Heimerl, Vice President; Irol W. Balsley, Secretary; John W. Rau, Jr., Treasurer; Agnes M. Kinney, Historian; Robert A. Lowry, Past President; and John E. Binnion, Executive Secretary. The Executive Board met five times during the biennium in Chicago, Denver, Chicago, Houston, and Norman (Oklahoma).

### **Research Awards**

The 1964 DPE Research Award was presented to Dr. Doris Anita Berry for her 1963 study, "The Role of Office Practice Instruction in the Training for General Office Assignments," In 1965, Dr. Harland E. Samson received the Research Award for his 1964 study, "Critical Requirements for Distributive Education Teacher-Coordinators: A Study of Observed Effective and Ineffective Behaviors of Iowa Secondary School D. E. Teacher-Coordinators Based upon an Analysis of Critical Incidents."



## National Research Conference

With the help of a \$1,000 grant from South-Western Publishing Company, Delta Pi Epsilon took a giant step during this biennium toward greater involvement of the fraternity in research activities. At a research conference in Detroit, in March, 1965, members of the DPE Research Committee, together with 15 persons responsible for collegiate research, four consultants, and the DPE National President and Vice President, met to work out designs for research that might be conducted by the fraternity. Two research proposals were prepared by this group (one in data processing and one in the secretarial area), and both of these proposals eventually were funded through federal grants. In addition, a research procedures manual was prepared to help local chapters in conducting similar research conferences for their members.

In May, 1965, the research proposal entitled "Curricular Implications of Automated Data Processing for Educational Institutions" was submitted to the U. S. Office of Education with a request for funding. In September, 1965, funds totaling \$148,900 were granted by the U. S. Office for conducting the research over a 21-month period. Dr. F. Kendrick Bangs served as principal investigator, and Dr. Mildred Hillestad served as research associate for the project.

## Membership

During 1964, membership in the fraternity rose to 8,363, including 4,015 active members, 1,024 life members, 128 members, and 3,196 inactive members. By the end of the biennium, the membership had reached a total of 8,867, with 4,226 active members, 1,096 life members, 134 honorary members, and 3,411 inactive members.

## Publications

The *Delta Pi Epsilon Journal* continued to be published. Editors of the *Journal* during this biennium were Peter G. Haines, Robert M. Kessel, Mildred Hillestad and Ramon P. Heimerl, and Theodore Woodward. Dr. Nanassy continued to edit the *Business Education Index* for the years 1964 and 1965. Research summaries were published in the Fall, 1964, and Fall, 1965, issues of the *National Business Education Quarterly*. Two special publications during the 1964-1965 biennium were the National Council Minutes for 1963 and the revised National Constitution and Bylaws.

## New Chapters

Three new chapters were installed during this biennium: ALPHA XI CHAPTER at Hunter College on March 14, 1964; ALPHA OMICRON CHAPTER at the University of California at Los Angeles on May 16, 1964; and ALPHA PI CHAPTER at Wayne State University on October 16, 1965.

### **Fifteenth National Council**

The fifteenth National Council met at the Oklahoma Center for Continuing Education, University of Oklahoma, November 11-13, 1965. Each of the 45 chapters was represented by a delegate present at this meeting.

## **The 1966-1967 - Biennium**

### **Ramon P. Heimerl Is President and Ellis J. Jones Is New Executive Secretary**

### **National Executive Board**

The national officers elected for the years 1966-1967 were: Ramon P. Heimerl, President; F. Kendrick Bangs, Vice President; Louise K. Westrick, Secretary; Eugene Wyllie, Treasurer; Cecilia Hopkins, Historian; Ruth I. Anderson, Past President; and Ellis J. Jones, Executive Secretary.

During this biennium, the Executive Board met in Chicago, Denver, Chicago, and Minneapolis.

### **New Executive Secretary**

Dr. Ellis J. Jones, Gustavus Adolphus College, St. Peter, Minnesota, and a member of Phi Chapter, became the fourth DPE Executive Secretary during the 1966-1967 biennium.

### **Research Awards**

The 1966 Research Award was presented to Dr. Lester I. Sluder for his 1965 study, "An Analysis and Synthesis of Research Findings Pertaining to General Business." The 1967 Award recipient was Dr. Elaine Uthe for her 1966 study, "An Evaluation of the Difficulty Level of Shorthand Dictation Materials."

Because of the large number of studies submitted each year, the 1967 National Council delegates approved a policy that only doctoral dissertations would be considered in granting the annual research award.

### **Other Research Activities**

The Data Processing Research study continued under the direction of F. Kendrick Bangs and Mildred Hillestad. On July 1, 1966, the secretarial study developed at the 1965 Research Conference was funded for a two-year period through the U. S. Office of Education, with Fred S. Cook as principal investigator.

A Board of Governors for Research and Development in Business Education was formed at a meeting in Denver, October 15-16, 1967. The major task of the Board of Governors was to complete the research project, New Office Business Education Learning Systems (NOBELS), funded by the U. S. Office of Education through The Ohio State University Center for Vocational Education, with Frank Lanham as principal investigator.

A second research training conference was held in Detroit, March 5-9, 1967.

A study on the status of business education by James Marinas, Ray G. Price, Marvin Clark, and Sidney Eckert was completed during this biennium. This study was a survey of secondary schools to determine what business subjects were being offered, the grade levels at which business subjects were offered, and the scholastic ability of students enrolled in the different business subjects.

## Membership

The 1966 membership was comprised of: 4,522, active; 1,101, life; 132, honorary; and 3,867, inactive, for a total of 9,622. In 1967, the membership was 10,372, comprised of: 5,150, active; 1,104, life; 146, honorary; and 3,972, inactive.

## Publications

*The Delta Pi Epsilon Journal* was continued as a regular publication with Irene Place as editor. Dr. Nanassy again edited the 1966 and 1967 issues of the *Business Education Index* and Psi Chapter prepared the research summaries for the Fall, 1966, and Fall, 1967, issues of the *National Business Education Quarterly*.

From the National Office, Dr. Jones issued the monthly National Office Bulletin (NOB) and the quarterly National Newsletter. These publications had been issued regularly since Dr. Hicks initiated the custom when he was Executive Secretary. (Editor's note: Beginning in 1988 the DPE Bulletin and DPE Newsletter were published periodically throughout the year.)

Special publications of the biennium included the 1965 National Council minutes, the 1965 National Constitution and Bylaws, *Handbook for Chapter Officers*, "Facts About DPE," and *Guide for Planning and Executing Interchapter Activities*.

## New Chapters

Five new chapters were added to the roster during the biennium. On January 15, 1966, ALPHA RHO CHAPTER was installed at Fresno State College; ALPHA SIGMA CHAPTER was installed on May 26, 1966, at Arizona State University; ALPHA TAU CHAPTER was installed on July 30, 1966, at the University of Northern Iowa; ALPHA EPSILON CHAPTER was installed on July 31, 1966, at the University of Nebraska; and on May 27, 1967, ALPHA PHI CHAPTER was installed at Northern Illinois University.

## Interchapter Activities

The first DPE function at the American Vocational Association (AVA) Convention was a luncheon at the 1966 AVA Convention in Denver.

Under the chairmanship of Robert F. Oravetz, the Interchapter Relations Committee developed and published a *Guide for Planning and Executing Interchapter Activities*.

## **Homeless Chapter Problem**

An important constitution change was made at the 1967 National Council meeting to allow chapters to stay in existence even though the chapter's college or university had curtailed or discontinued the business teacher education program. The requirement of one initiation a year and a chapter sponsor from the college or university faculty was waived by this constitution change.

## **Sixteenth National Council**

The sixteenth National Council meeting was at the Pick-Nicollet Hotel, Minneapolis, on November 2-4, 1967. Of the 45 chapters in the fraternity, 43 sent delegates. Iota and Alpha Theta chapters were not represented.

## **The 1968-1969 Biennium**

### **F. Kendrick Bangs Sees Eight New Chapters Installed**

## **National Executive Board**

The national officers elected by the National Council to serve during the 1968-1969 biennium were: F. Kendrick Bangs, President; Raymond White, Vice President; Eugene Wyllie, Treasurer; Cecilia Hopkins, Secretary; Della Rosenberg, Historian; Ramon P. Heimerl, Past President; and Ellis J. Jones, Executive Secretary. Four official Executive Board meetings were held in Chicago, New York, Chicago, and Vail (Colorado).

## **Research**

Dr. Harry Olson, Jr., received the 1968 Research Award for his 1967 study, "Relationships Between Certain Personality Characteristics of Distributive Education Teacher-Coordination and Job Satisfaction." The Research Award was not presented in calendar year 1969 because the Executive Board decided to present the award at National Association of Business Teacher Educators (NABTE) in 1970.

## **Other Research Activities**

The fraternity sponsored a Research Conference at the University of Iowa, April 24-26, 1969. The designs for two research studies that could be carried out at the chapter level were developed by delegates from 14 chapters. Titles given to these studies were "Images of Secondary Business Education Programs" and "Comparisons of Federally Reimbursed with Non-Federally Reimbursed Business Education Programs."

A major achievement in research during this biennium was the dissemination of the research findings from the data processing study completed by F. Kendrick Bangs and Mildred Hillestad.

The NOBELS project was still under way, and DPE continued to cooperate in the completion of this project.

## New Chapters

Eight new chapters were installed during this biennium. ALPHA CHI CHAPTER, Rider College, November 20, 1968; ALPHA PSI CHAPTER, Mankato State College, February 8, 1969; ALPHA OMEGA CHAPTER, Brigham Young University, February 20, 1969; BETA ALPHA CHAPTER, Indiana University of Pennsylvania, May 17, 1969; BETA BETA CHAPTER, Southern Illinois University at Edwardsville, May 23, 1969; BETA DELTA CHAPTER, University of Georgia, October 18, 1969; and BETA EPSILON CHAPTER, San Jose State College, December 6, 1969.

## Membership

In 1968, the membership was comprised of: active, 5,794; life, 1,111; honorary 144; and inactive, 4,052. The 1969 membership was active, 6,756; life, 1,109; honorary, 15; and inactive, 4,271.

## Publications

Irene Place served as editor for *The Delta Pi Epsilon Journal* through the November, 1968, issue, and Dorothy Crunk assumed the editorship with the February, 1969, issue. Louis C. Nanassy continued to edit the 1968-1969 issues of the *Business Education Index*. Research summaries were prepared for the Fall, 1968, and Fall, 1969, issues of the *National Business Education Quarterly*.

Special publications were the 1967 National Council Minutes and "Business Teaching as a Career," originally prepared by Fred Cook. In 1968, XI Chapter revised and updated this publication.

Under Cecilia Hopkins' leadership, the "Interchapter Activities Guide" was distributed to all chapters for use in planning and carrying out interchapter activities.

## Seventeenth National Council

The Holiday Inn, Vail, Colorado, was the meeting place for the seventeenth National Council meeting, November 6-8, 1969. Delegates were present from 49 of the 52 chapters. Iota, Tau, and Alpha Psi chapters were not represented.

Under the chairmanship of Billie Holcomb, a special committee at this National Council meeting developed a statement regarding business teacher preparation and state department credentialing. From a brainstorming session concerning the future of DPE, the Council set up a long-range planning committee.

The National Office Procedures Analysis Committee made recommended changes regarding the forms used by the fraternity.

## The 1970-1971 Biennium

### Raymond R. White Begins the Decade of the '70s

As the fraternity looked ahead into the decade of the '70s, it was clear that added emphasis was to be given to research activities, to developing a stronger line of communication among chapters, and to reviewing the criteria for the admission

of new chapters. It was clear, too, that no less emphasis would be given to the formulation of policy statements that would serve as a guide for both business and business education.

### **National Executive Board**

The officers for the 1970-1971 biennium were: Raymond R. White, President; Eugene D. Wyllie, Vice President; Doris H. Crank, Secretary; Gordon F. Culver, Treasurer; Della Rosenberg, Historian; F. Kendrick Bangs, Past President; and Ellis J. Jones, Executive Secretary. The Executive Board held four official meetings during the biennium in Chicago, San Francisco, Chicago, and San Antonio.

### **Research Awards**

The annual DPE Research Award was given in 1970 to Dr. John Hector Carmichael for his 1968 study, "An Analysis of Activities of Middle Management Personnel in the Retail Trade Industry with Implications for Curriculum Development in Post-Secondary Institutions." In 1971, the Research Award was presented to Dr. Franklin Eugene Butts and Dr. Gary L. Prickett for their study, "The Effect of Audio-Tutorial and Programmed Instruction Laboratories on Achievement in Accounting Principles," completed in 1969.

### **New Chapters**

During the 1970-1971 biennium, five new chapters were installed: BETA ZETA CHAPTER, Indiana State University, Terre Haute, April 24, 1971; BETA ETA CHAPTER, Bowling Green University, Bowling Green, Ohio, May 15, 1971; BETA THETA CHAPTER, University of Wisconsin—Whitewater, June 30, 1971; BETA IOTA CHAPTER, Illinois State University, Normal, October 23, 1971; and BETA KAPPA CHAPTER, Portland State University, Portland, Oregon, December 4, 1971.

### **Membership**

The 1970 membership was: active, 6,788; honorary, 162; life, 1,107; and inactive, 4,928. In 1971, the membership was: active, 7,104; honorary, 176; life, 1,099; and inactive, 5,633. By the end of 1971, the total membership was 14,012.

### **Publications**

The Publications Committee began to broaden its scope of responsibility to go beyond the supervision of the *Business Education Index* and *The Delta Pi Epsilon Journal*. The Committee became the clearinghouse for all suggestions, recommendations, and complaints regarding existing and proposed new publications. While *The Delta Pi Epsilon Journal* and the *Business Education Index* continued to be major publications, others, such as the DPE News, the National Office Bulletin, the Policies Commission statements (issued by the

Policies Commission for Business and Economic Education), and the research bulletins provided information and direction for the fraternity. Three Policies Commission statements were released during the 1970-1971 biennium: "This We Believe About Business Education in the Secondary School" in 1970, "This We Believe About the Expanding Leadership and Planning Role of Business Educators in Developing a Total Vocational Program, in Cooperation with Other Vocational Educators and General Educators," and "This We Believe About the Expanding Leadership and Planning Role of the Business Educator in General Education" in 1971.

### **Long-Range Planning Committee**

The Long-Range Planning Committee, charged with the task of determining the needs and goals of local chapters, as well as the goals of the fraternity as a whole, conducted a survey of the chapters, compiled the responses, and used the responses to plan for the future. This Committee recommended that leadership training conferences be conducted in conjunction with regional and national professional meetings and that a national research conference be held once each biennium to develop plans for needed research in business education.

### **Special Projects**

A special project, completed by Alpha Phi Chapter, Northern Illinois University, consisted of a series of 12 consumer education programmed learning-instruction booklets designed for use with secondary school students. By agreement between Alpha Phi Chapter and the National Executive Board, these materials were offered as a publication of the fraternity.

The Service Projects Committee had been charged with the task of generating interest within local chapters to develop and implement meaningful service projects. To fulfill this responsibility, the Committee compiled an "ideas" booklet under the title *Suggested Service Projects*.

In 1971, the Interchapter Relations Committee revised and edited a *Guide for Planning Interchapter Activities*.

### **Eighteenth National Council**

The 1975 National Council meeting was held November 4-6 at the Gateway Hotel, St. Louis. A major outcome of the Council meeting was the change in the constitution to provide membership support for "homeless" chapters. A constitution change was enacted to permit chapters to add members even though the chapter was located in colleges or universities where business education programs no longer existed. This change permitted chapters to initiate as new members individuals who held master's degrees from regionally accredited institutions that did not have Delta Pi Epsilon chapters.

Another important constitution change provided that the vice president would automatically assume the presidency at the end of the term of office of the

president who took office at the time the vice president was duly elected by the National Council.

## **The 1972-1973 Biennium**

### **Eugene D. Wyllie's Presidency Sees Unprecedented Growth**

#### **National Executive Board**

For the 1972-1973 biennium, the officers were: Eugene D. Wyllie, President; Gordon F. Culver, Vice President; Wanda Blockhus, Secretary; Robert A. Ristau, Treasurer; Franklin J. Hansen, Historian; Raymond R. White, Past President; and Ellis J. Jones, Executive Secretary.

#### **Research Activities**

The DPE Research Award was presented in 1972 to Dr. Robert A. Ristau for his 1970 study, "The Development of a Business Education Model for Methods and Procedures in a Planning, Programming, and Budgeting System." In 1973, Dr. Betty Jean Brown received the Award for her 1971 study, "The Relationship Between Supervisor and Student Evaluations of Teaching Effectiveness of General Business Teachers."

The Research Projects Committee prepared and distributed Research Bulletin No. 3, *Needed Research in Business Education*. This Committee also planned a fourth National DPE Research Conference, held in Louisville, November 8-10, 1972. Representatives from 58 chapters met to develop research topics and research projects.

#### **New Chapters**

During the biennium, nine new chapters were installed, making this biennium the largest growth biennium in the history of the fraternity. The new chapters were: BETA LAMBDA CHAPTER, Shippensburg State College, Shippensburg, Pennsylvania, February 12, 1972; BETA MU CHAPTER, Central Connecticut State College, New Britain, March 4, 1972; BETA NU CHAPTER, Utah State University, Logan, March 29, 1972; BETA XI CHAPTER, Memphis State University, April 29, 1972; BETA OMICRON CHAPTER, Southern Illinois University, Carbondale, October 29, 1972; BETA PI CHAPTER, California State University, Los Angeles, November 11, 1972; BETA RHO CHAPTER, Western Michigan University, May 19, 1973; BETA SIGMA CHAPTER, University of Wisconsin—Eau Claire, July 28, 1973; and BETA TAU CHAPTER, Georgia State University, Atlanta, November 17, 1973.

#### **Membership**

In 1972, the membership was: active, 7,584; honorary, 189; life, 1,099; and inactive, 6,134. The 1973 membership was: active, 8,807; honorary, 197; life, 1,087; and inactive 6,063. By the end of 1973, 16,154 members had been initiated into Delta Pi Epsilon.



## **Publications**

The Publications Committee provided the leadership and guidance for a number of extra projects that were undertaken during this biennium. Research Bulletin No. 3, *Needed Research in Business Education*, was published in 1973. Four Policies Commission statements were issued by the Policies Commission for Business and Economic Education: "This We Believe About the Preparation and Certification of Business Teachers" and "This We Believe About the Multiple Roles of the Business Educator," issued in 1972; "This We Believe About the Role of Business Education in Career Education" and "This We Believe About the Role of Business Education in Consumer Education," issued in 1973.

## **Special Projects And Activities**

The Service Projects Committee developed a list of 10 specific service projects and a list of several general service projects that might be used by local chapters to provide service to business education at all levels. The Long-Range Planning Committee worked during the biennium to develop a "Statement of Purpose for Delta Pi Epsilon" as had been requested by the National President. This statement was to serve as a guide for the future direction of Delta Pi Epsilon.

The fraternity's Joint Committee on Economic Education continued to explore with the Joint Council on Economic Education possible ways of incorporating economics into business education. Their concern lay with the promotion of greater involvement of business educators in the economic education programs and projects. The Committee assisted the Joint Council in the publication in March, 1972, of a 94-page paperback collection of articles entitled *Economics in the Business Curriculum*.

A significant highlight of the activities during the 1972-1973 biennium was the presentation to Dr. Louis C. Nanassy of the first outstanding service award in the 36-year history of Delta Pi Epsilon. Dr. Eugene D. Wyllie, National President, presented this award to Dr. Nanassy in recognition of his long and distinguished service as editor of the *Business Education Index* from 1947 to 1972, although Dr. Nanassy was to continue as editor for some years.

It should be noted that during this biennium, Chi Chapter, Pennsylvania State University, established as a chapter in 1951, requested that the Executive Board grant it inactive status. The Executive Board complied with this request on November 7, 1973.

The Interchapter Relations Committee planned a national leadership conference, which was held at the Roosevelt House in New York City on September 30, 1972.

## **Nineteenth National Council**

The nineteenth National Council meeting was held November 8-10, 1973, at the Marriott Hotel, Indianapolis. A primary concern of the delegates was the criteria used for establishing new DPE chapters. The National Council Special Committee on National Structure recommended that it be set up to review the criteria in light of advances in business education and the newly adopted objectives of Delta Pi Epsilon, ratified by the chapters in 1972.

The Council also indicated that, due to the rapid growth of the fraternity in recent years, a study should be made of the National Office operations, with particular attention given to the duties and assignments of the National Executive Secretary and the machines and equipment used in the National Office. The Executive Board voted to employ an outside consultant to study the organization and management of the National Office.

## **The 1974-1975 Biennium**

### **Gordon F. Culver Stresses Involvement, Evaluation, Quality, and Accountability**

#### **National Executive Board**

For the 1974-1975 biennium, the national officers were: Gordon F. Culver, President; Alice Yetka Byrnes, Secretary; Franklin J. Hansen, Treasurer; Eva M. Maxey, Historian; Eugene D. Wyllie, Past President; and Ellis J. Jones, Executive Secretary. The Executive Board held five official meetings during the biennium: Chicago, Cherry Hill (New Jersey); St. Peter (Minnesota); Overland Park (Kansas); and Dallas.

Upon the recommendation of the Service Projects Committee, a new theme, "DPE—Designing Positive Education," was adopted by the National Executive Board to be used for the school year, 1974-1975, and Summer, 1975.

#### **Research Activities**

The 1974 Research Award was presented to Dr. Stanley H. Solomon for his study, "Objectives of Undergraduate Collegiate Accounting Education: Perceptions of Educators and Practitioners," completed in 1972. In 1975, Dr. Jolene Davidson Scriven received the award for her 1973 study, "Opinions of Illinois Secondary Business Teachers Concerning Selected Political and Socio-Economic Issues."

The Research Projects Committee conducted the fifth National Research Conference in Denver in 1974. Under the direction of the Research Projects Committee, Research Bulletin No. 4, *Implications of Research for Teaching Typewriting*, Second Edition, 1974, was prepared by Dr. Leonard J. West.

#### **New Chapters**

During the biennium, six new chapters were installed: BETA UPSILON CHAPTER, Pittsburg State University, Pittsburg, Kansas, February 9, 1974; BETA PHI CHAPTER, Montclair State College, Upper Montclair, New Jersey, May 4, 1974; BETA CHI CHAPTER, Western Illinois University, Macomb, December 14, 1974; BETA PSI CHAPTER, Eastern Illinois University, Charleston, February 8, 1975; BETA OMEGA CHAPTER, Louisiana Tech University, Ruston, September 20, 1975; and GAMMA ALPHA CHAPTER, Eastern Michigan University, Ypsilanti, October 18, 1975. At the end of the biennium, the number of chapters was 73.

## Membership

The 1974 membership was comprised of: active, 8,979; honorary, 203; life, 1,079; and inactive, 6,861. In 1975, the membership was: active, 9,367; honorary, 212; life, 1,074; and inactive, 7,477. By the end of 1975, 18,130 members had been initiated into Delta Pi Epsilon.

## Publications

The Publications Committee surveyed the fraternity for reactions to *The Delta Pi Epsilon Journal*. It also drew up guidelines for refereeing *The Delta Pi Epsilon Journal* and prepared "Criteria for Selection of Articles" to appear in the *Journal*.

Dr. Harves Rahe completed the Publication, *Index to Doctoral Dissertations in Business Education, 1900-1975*.

During the biennium, the Policies Commission for Business and Economic Education issued four statements: "This We Believe About Implementing Individualization of Instruction in Business Education" and "This We Believe About the Role of the Business Educator in Public Relations," issued in 1974; and "This We Believe About Professionalism in Business Education" and "This We Believe About the Meaning of the American Work Ethic," issued in 1975.

The consumer education programmed instruction units were revised in 1975 by Alpha Phi Chapter and distributed by the National Office.

## Joint Committee on Economic Education

The Joint Committee on Economic Education met in July, 1975 at a three-day workshop at Virginia Commonwealth University. The "purpose was to evaluate consumer education materials available in business education. At the University, a center was established for the archiving of curriculum materials.

## Other Events

Dr. F. Kendrick Bangs and Dr. Estelle Popham were appointed to serve on a special committee to plan DPE's observance of the Nation's bicentennial year and the fraternity's anniversary in 1976. Dr. Louis C. Nanassy continued as editor of the *Business Education Index*.

During the 1974-1975 biennium, the entire fraternity was saddened by the death of Dr. Paul S. Lomax on February 6, 1975. It can be truly stated that no man devoted more time and energy toward improving the professional status of business education than Dr. Lomax. In a eulogy presented at the funeral, DPE National President Gordon F. Culver said: "With the passing of Dr. Paul S. Lomax, the world has lost a great friend.

"Because of his wisdom, foresight, personal standards of excellence, and love for people, business education has been raised to the level of a true profession.

"As founder of Delta Pi Epsilon, the national honorary graduate fraternity in business education, Dr. Lomax touched the lives of an unusually large number of people. Founded 39 years ago, Delta Pi Epsilon inspired business teachers

throughout the world to strive for excellence, both as teachers and as individuals—and Paul Lomax served as an example to be emulated.

“From the 17,000 members of Delta Pi Epsilon, grateful thanks are given for the life of Dr. Paul S. Lomax.

“From the National Executive Board and members of Delta Pi Epsilon, a sincere expression of sympathy is extended to the family of Dr. Paul S. Lomax.”

### **Twentieth National Council**

The twentieth National Council met in Dallas on November 6-8, 1975. Dr. Culver identified the following achievements of his administration:

1. A study of the National Office by an outside management consultant. Mr. Jack Staehle, Chicago, had completed the study during this biennium.
2. A review of the petitioning criteria and procedures for new chapters of Delta Pi Epsilon with proposed revisions.
3. A critical analysis and revision of the criteria for evaluating doctoral studies entered in the DPE Research Award Project. Two-member teams in each of the five National Business Education Association (NBEA) regions were to be appointed to screen research studies submitted for the Award. Each member of the teams was to be appointed for two years.
4. An evaluation of *The Delta Pi Epsilon Journal* by a random sample of members. During this biennium, Drs. Doris and Floyd Crank served as editors of the *Journal*, and Dr. Adaline Jones Eastman and Dr. Richard Kelly served as associate editors. Dr. Dorothy Crunk completed her term as editor with the publication of the August, 1974, issue.
5. A formalization of editorial procedures making *The Delta Pi Epsilon Journal* a refereed publication.
6. The publication of two new major research resources: *Implications of Research for Teaching Typewriting* by Leonard J. West and *Index to Doctoral Dissertations in Business Education, 1900-1975* by Harves Rahe.
7. A plan for special activities extending through 1976 to mark DPE's fortieth anniversary as well as the nation's bicentennial

### **The 1976-1977 Biennium**

#### **Wanda Blockhus Sees DPE Research Foundation a Reality**

### **National Executive Board**

At the National Council meeting in Dallas in November, 1975, the Council delegates elected the following national officers to lead the organization during

the 1976-1977 biennium: Wanda Blockhus, President; Robert A. Ristau, Vice President; John D. Nigro, Secretary; Jeanne L. Holley, Treasurer; Robbie Woodall, Historian; and Gordon F. Culver, Past President. Ellis J. Jones again was named by the Executive Board to serve as Executive Secretary.

The Executive Board held two meetings in 1976 in Bloomington (Minnesota), and in Chicago and three meetings in 1977 in Tempe (Arizona), Boston, and Chicago.

The theme chosen for the 1976-1977 biennium was "Commitment Update."

### **Research Activities**

The 1976 DPE Research Award was presented to Dr. Walter Lee Bishop for his study, "Factors Affecting the Level and Development of Economic Understanding of Community College Students," completed in 1974. For the first time, merit awards were given for outstanding research. The three merit awards presented in 1976 were: Dr. Scot Ober, "An Analysis of the Business Working Papers Typed by Beginning Office Workers"; Dr. Rosanne Reiff, "Entry Level Job Qualifications and Employee Attitudes in New York City Word Processing Centers and Implications for Secondary School Business Education Curricula in the New York Metropolitan Area"; and Charles A. Stamps, "A Comparison of the Traditional Textbook Method and the In-Basket Exercise Method of Teaching Production Typewriting at the Post-Secondary Level."

The 1977 National Research Award was presented to Dr. Thomas O. Stanley for his 1975 study, "The Development of the Test of Consumer Competencies." In 1977, for the first time, the recipient of the Award presented highlights of the study at the NBEA convention.

The sixth DPE National Research Conference was held in November, 1976, in Oklahoma City. At this research conference, Delta Pi Epsilon's fortieth anniversary banquet was hosted by Beta and Sigma Chapters. The principal speaker was Dr. McKee Fisk, who reviewed the history of Delta Pi Epsilon.

### **Research Foundation**

At the twenty-first National Council meeting, the National Council delegates approved the Articles of Incorporation of The Delta Pi Epsilon Research Foundation Inc. This action came at the fourth general session, Friday, November 4, 1977.

### **Membership**

In 1976, membership in national DPE was: active, 9,536; honorary, 218; life, 1,072; inactive, 8,183; transfer, 863; and other, 26. In 1976, 916 new members were initiated.

In 1977, the national membership was: active, 9,633; honorary, 220; life, 1,066; inactive, 8,865; transfer, 919; other, 22, and 739 new initiates were added in 1977.



***Signing of the Delta Pi Epsilon Research Foundation, Inc., Articles of Incorporation during the 1977 Delta Pi Epsilon National Council Meeting***

*Seated (left to right): Jeanne L. Holley, Robert A. Ristau, Wanda Blockhus, John S. Nigro, Robbie Woodall, and Gordon F. Culver.*

*Standing (left to right): Ellis J. Jones. Witnesses of signers: Robert B. Mitchell, Jack Coffey, Russell Madsen, Richard J. Dallas, Lois Haydysch, Lillie L. Taylor, and Clay V. Sink*

The twenty-first DPE National Council, in Chicago, November 2-5, 1977, approved the category of Emeritus Member in Delta Pi Epsilon.

### **New Chapters**

The new chapters installed in the 1976-1977 biennium were: GAMMA BETA CHAPTER, Trenton State College, Trenton, New Jersey, October 16, 1976; GAMMA GAMMA CHAPTER, Virginia Commonwealth University, January 22, 1977; and GAMMA DELTA CHAPTER, University of Rhode Island, September 23.

In January, 1976, the National Executive Board voted to place Tau Chapter, Columbia University, on inactive status. The Board also granted a request from Psi Chapter, University of Southern California, to be regarded as a "homeless" chapter. By January, 1976, the chapters that fell into the "homeless" category were: Eta, University of Denver; Iota, Syracuse University; Lambda, Northwestern University; Omega, George Peabody College for Teachers; and Psi. In addition, Chi (Pennsylvania State University) and Tau (Columbia University) were classified as "inactive." The twenty-first DPE National Council delegates meeting in Chicago, November 2-5, 1977, voted to change the term "homeless" to "chapter-at-large" to refer to chapters that no longer were associated with a graduate business education program in a university or college.

## Major Biennium Thrusts

In her report to the twenty-first DPE National Council, President Blockhus cited three major thrusts that characterized the 1976-1977 biennium: (1) a planned publications program consisting of one series of research bulletins for the researcher and one series of rapid readers for the classroom teacher; (2) plans for a Delta Pi Epsilon Research Foundation; and (3) a Delta Pi Epsilon distinguished lecture series with an annual lecture to be presented at the second general session of the NBEA convention. This lecture series differed from the earlier series that had been discontinued in 1957. The lectures in the new distinguished lecture series were to be presented by representatives from businesses that are visited in *Fortune 500*.

## Publications

After serving as editor of the *Business Education Index (Index)* for 30 years, Dr. Louis Nanassy submitted his resignation after the 1976 issue was published. Dr. Rosemarie McCauley, Montclair State College, agreed to serve as editor for the 1977 *Index*. Dr. Nanassy was honored at the DPE brunch at the NBEA Convention in 1977 in New York for serving 30 years as editor of the *Index*.

The February, 1976, issue of *The Delta Pi Epsilon Journal* was a special issue entitled "DPE—Forty Years of Service to Business Education." This issue of the *Journal* reviewed DPE's history from 1936 to 1976. Drs. Doris and Floyd Crank continued to serve as editors of the *Journal* through the 1976-1977 school year, and Dr. Adeline Jones Eastman and Dr. Richard Kelly were associate editors. The February issue was planned, and much of it was written by the editors and associate editors.

In June, 1977, Dr. Oleen Hensen was appointed editor, and Dr. Edward Brower was appointed associate editor of *The Delta Pi Epsilon Journal*.

During the latter part of this biennium, the Editorial Board, consisting of one member from each of the five NBEA regions, served as referees for the selection of articles to be published in the *Journal*.

Two major publications that appeared during this biennium were Service Bulletin No. 1, *Research: Process and Product*, by Mildred Hillestad and Service Bulletin No. 2, *Design and Conduct of Surveys and Experiments in Business Education*, by Leonard J. West.

Three rapid readers were published during the biennium: Rapid Reader No. 1, *Teaching General Business*, by Betty J. Brown; Rapid Reader No. 2, *Teaching Consumer Education*, by David K. Graf; and Rapid Reader No. 3, *Teaching Typewriting*, by Gary McLean.

The Policies Commission for Business and Economic Education published three policy statements in 1976-1977: In 1976, "This We Believe About Competency-Based Business Education; and in 1977, "This We Believe About the Mission of Business Education" and "This We Believe About the Role of Business Education in Adult and Continuing Education."



### **Other Events**

A sound-slide presentation of Delta Pi Epsilon, entitled "The World of DPE," was prepared by Beta Epsilon Chapter, San Jose State University.

### **Twenty-first National Council**

The twenty-first DPE National Council meeting was held at McCormick Inn, Chicago, November 3-5, 1977.

## **The 1978-1979 Biennium**

### **Robert A Ristau Serves as President of Both DPE and the DPE Research Foundation**

### **National Executive Board**

At the 1977 National Council meeting in Chicago, the following national officers were elected for the 1978-1979 biennium: Robert A. Ristau, President; R. DerMont Bell, Vice President; John S. Nigro, Secretary; Jeanne L. Holley, Treasurer; LaNeta L. Carlock, Historian; and Wanda Blockhus, Past President. Dr. Ellis J. Jones was appointed by the Executive Board to serve again as the Executive Secretary.

The National Executive Board met three times in 1978 at St. Peter (Minnesota), Los Angeles, and at the national research conference in Pittsburgh. In 1979, the Board met in Atlanta, Denver, and at the National Council meeting in Nashville.

The theme chosen for the 1978-1979 biennium was "The Spotlight is on You."

During the 1978-1979 biennium, the Executive Board approved a newsletter editors' handbook.

### **Research Activities**

The 1978 DPE National Research Award was presented to Dr. Roger Ditzenberger for his 1976 study, "Perceived Barriers to Implementing a Distributive Education Competency-Based Learning System." The merit award in 1978 was presented to Dr. L. Sue Keith for her 1976 study, "Development of an Instrument to Evaluate Problem-Solving Skills of Secretarial Students: A Feasibility Study."

The recipient of the 1979 National Research Award was Dr. Aida E. Santiago-Perez for her study, "A Comparison of Student Achievement in Beginning Typewriting in High Schools in Puerto Rico Using Special Spanish Materials Versus Those Currently Adopted," completed in 1977.

During the 1978-1979 biennium, the National Executive Board approved a national research study in word processing to be conducted by Drs. Richard D. Brown, Jolene D. Scriven, Kathleen P. Wagoner, and Jeanne L. Holley.

The seventh DPE National Research Conference was held in Pittsburgh, November 1-4, 1978.



## Research Foundation

Bylaws for the DPE Research Foundation were approved by the DPE National Executive Board on November 2, 1978. The Articles of Incorporation of the Delta Pi Epsilon Research Foundation Inc. were approved by the 1977 DPE National Council delegates on November 4, 1977, to “provide for the advancement of technical and scientific investigation, research, and experimentation in the field of study commonly known as business education . . . and to make grants and gifts to support and assist in such investigation, research, and experimentation.”

The Delta Pi Epsilon National Executive Board served as the first nominating committee and the first officers for the Research Foundation. The following officers were elected on November 5, 1977, to serve through June 30, 1979: Robert A. Ristau, President; R. DerMont Bell, Vice President; John S. Nigro, Secretary; Jeanne L. Holley, Treasurer; Wanda Blockhus, Director; LaNeta Carlock, Director; and Ellis J. Jones, Executive Secretary. In addition, directors were nominated and elected by local DPE chapters in each of the five NBEA regions. Directors elected from the regions were: Adele Schrag, Temple University; Anne Matthews, South Carolina Department of Education; T. James Crawford, Indiana University; Gordon Culver, University of Nebraska; and William Himstreet, University of Southern California. The Delta Pi Epsilon National Executive Board appointed Dr. F. Kendrick Bangs as the DPE representative to the Research Foundation Board.

Six additional directors of the Research Foundation were elected by the new Research Foundation Board. These six were: Lohnie J. Boggs, Arizona State University; Judith Lambrecht, University of Minnesota; Robert A. Ristau, Eastern Michigan University; Padmakar M. Sapre, New York University; Eugene D. Wyllie, Indiana University; and Alice Yetka, Portland State University.

Officers of the Foundation elected in 1979 were: F. Kendrick Bangs, President; Gordon F. Culver, Vice President; Alice Yetka, Secretary; and Lohnie J. Boggs, Treasurer. Ellis J. Jones serves as Executive Secretary, a nonvoting member of the Board.

## Distinguished Lecture Series

The 1978 distinguished lecturer was Donald V. Seibert, Chairman of the Board and Chief Executive Officer, J. C. Penney Company Inc. Mr. Seibert's topic, delivered at the second general session of the National Business Education Convention, was “The Great Challenge of Business: Managing to the Potential of People.”

The 1978 distinguished lecture was published with the aid of a grant from the Laura and McKee Fisk Publication Trust Fund administered through Alpha Rho Chapter at California State University, Fresno.

In 1979, the distinguished lecturer was William Agee, Chairman, President, and Chief Executive Officer of the Bendix Corporation, who spoke at the second general session of the NBEA Convention on the topic “An Agenda for the American Economy.”

## New Chapters

Five new chapters of Delta Pi Epsilon were installed during the 1978-1979 biennium: GAMMA EPSILON CHAPTER, East Texas State University, Commerce, November 11, 1978; GAMMA ZETA CHAPTER, University of Southern Mississippi, Hattiesburg, March 17, 1979; GAMMA ETA CHAPTER, Middle Tennessee State University, Murfreesboro, April 28, 1979; GAMMA THETA CHAPTER, Arkansas State University, September 15, 1979; and GAMMA IOTA CHAPTER, University of the District of Columbia/Mt. Vernon Campus, November 2, 1979. National DPE now had 81 chapters.

## Membership

The 1978 membership stood at: active, 9,771; honorary, 224; life, 1,060; inactive, 9,420; transfer, 966; and other, 19. New initiates numbered 647 in 1978.

In 1979 the membership was comprised of: active, 9,884; honorary, 230; life, 1,054; emeritus, 4; inactive, 10,094; transfer, 979; and other, 19. The number of new initiates in 1979 was 893. (Editor's note: 1979 represents the highest year of DPE membership in its 75-year history.)

"Emeritus Member" was a new type of membership approved by the 1977 National Council and by the National Executive Board in June, 1978. The designation "Emeritus Member" may be assigned to DPE members who are at least 65 years of age and who have been a DPE member for at least 20 years or to members who have retired because of physical incapacity and who have 10 years of continuous DPE membership.

The 20,000th DPE member was initiated during this biennium: Susan Krzyskowski, initiated into Kappa Chapter on April 29, 1978.

## Publications

Beginning in 1978, Dr. Rosemarie McCauley assumed the duties of editor of the *Business Education Index*, after editing the 1977 issue as a temporary assignment. In January, 1978, Dr. Oleen Henson became editor of *The Delta Pi Epsilon Journal*, and Dr. Edward Brower became associate editor.

During this biennium, the national DPE research study on data processing was completed and published under the title *Curriculum Implications of Automated Data Processing* by Dr. F. Kendrick Bangs and Dr. Mildred Hillestad. Other publications in the biennium included: Research Bulletin No. 4, *Implications for Research in Teaching Typewriting* by Leonard J. West; Research Bulletin No. 5, *Needed Research in Business Education, 3rd Edition*; and *Bases for Evaluating Research* by Leonard J. West.

The Frederick G. Nichols memoirs were published under the title *The Early View of Business Education*. This publication was based on the handwritten notes of Professor Frederick G. Nichols. Dr. Russell J. Hosler, together with committee members Dr. Herbert A. Tonne, Dr. Lawrence W. Erickson, and Dr. Robert A. Ristau, prepared the manuscript; and on November 10, 1979, Dr. Hosler presented

the first copy to Dr. Ristau, DPE National President, during the 1979 National Council meeting.

### **Twenty-second National Council**

The National Council meeting was held November 8-10, 1979, in Nashville, Tennessee. This Council, among other things, approved *A Guide for Planning Interchapter Activities*; approved a recommendation that “chapters having curtailed or discontinued business education programs may elect an unlimited number of new members” who meet the membership qualifications, and approved the recommendation that the distinguished lecture be the lead article in *The Delta Pi Epsilon Journal*, rather than a separate insert in the *Journal*.

## **The 1980-1981 Biennium R. DerMont Bell’s Focus on Excellence**

### **National Executive Board**

The twenty-second DPE National Council, meeting in Nashville, in November, 1979, elected the following national officers for the 1980-1981 biennium: R. DerMont Bell, President; Charles R. Hopkins, Vice President; Jolene D. Scriven, Secretary; Richard J. Dallas, Treasurer; Gail Manning, Historian; and Robert A. Ristau, Past President. Ellis J. Jones again was named by the Executive Board to serve as Executive Secretary.

During 1980, the Executive Board met in Nashville, Mankato (Minnesota), and Hartford. In 1981, meetings were in Houston, Portland (Oregon), and Milwaukee.

The theme for 1980-1981 was “Focus on Excellence in Business Education.”

### **Research Activities**

The recipient of the 1980 DPE National Research Award was Dr. Norma J. Olson for her 1978 study, “Design and Validation of a Straight-Copy Typewriting Test Using Kinesthetic Sensitivity.” The 1980 merit award for research was presented to Dr. Jean Alderfer Hooven for her study, “The Effects of Intensive Practice on a Target Vocabulary of 500 High Frequency Words in First-Year Gregg Shorthand in Secondary Schools,” completed in 1978.

The 1981 Research Award recipient was Dr. Ellen J. Walch, whose study, “Utah High School Sophomore Attitudes Toward Women’s Roles and Nontraditional Vocational Career Choices,” was completed in 1979.

The national word processing study was completed during this biennium. The National Executive Board, at their January, 1981, meeting, authorized the publication of the report from this study.

During the biennium, the Research Projects Committee completed a review and synthesis of research in business education.

## Research Foundation

During 1980, the Research Foundation officers were F. Kendrick Bangs, President; Gordon F. Culver, Vice President; Alice Yetka, Secretary; and Lohnie J. Boggs, Treasurer. The 1981 officers were: Gordon F. Culver, President; Padmakar M. Sapre, Vice President; Alice Yetka, Secretary; and Lohnie J. Boggs, Treasurer.

In 1981, the first research grant was awarded by the Delta Pi Epsilon Research Foundation to Dr. Davern Perry for a study, "The Most Frequently Used Words and Phrases of Business Communication."

In 1981, Dr. Gayle Stelter, Mankato State University, was appointed executive secretary of the DPE Research Foundation.

## Distinguished Lectures

The distinguished lecturer in 1980 was Thomas A. Murphy, Chairman of the Board and Chief Executive Officer, General Motors Corporation. Mr. Murphy's lecture, "Let's Make the Eighties the 'We' Decade," was presented at the second general session of the 1980 NBEA Convention.

In 1981, the distinguished lecturer was J. W. Marriott, Jr., President and Chief Executive Officer of the Marriott Corporation, who spoke on the topic, "The Personal Service Industry Today."

At the January, 1980, National Executive Board voted to publish the distinguished lecture as the lead article in *The Delta Pi Epsilon Journal*, rather than to include the lecture as a separate insert.

## Membership

The 1980 membership was comprised of: active, 9,299; honorary, 239; life, 1,072; emeritus, 33; inactive, 11,348; transfer, 1,026; and other, 26. New initiates during 1980 numbered 827.

In 1981, the membership was classified as: active, 9,071; honorary, 251; life, 1,115; emeritus, 45; inactive 12,061; transfer, 1,065; and other, 24. DPE chapters initiated 655 new members in 1981.

## New Chapters

Four new chapters were installed: GAMMA KAPPA CHAPTER, Murray State University, Murray, Kentucky, April 25, 1980; GAMMA LAMBDA CHAPTER, Western Kentucky State University, Bowling Green, May 30, 1980; GAMMA MU CHAPTER, University of Louisville, September 13, 1980; and GAMMA NU CHAPTER, University of Alabama, November 18, 1980. In 1981, one new chapter was installed: GAMMA XI CHAPTER, Bloomsburg State College, Bloomsburg, Pennsylvania, October 31.

At the end of 1981, 86 chapters had been installed across the nation. By the end of the biennium, eight chapters had been granted at-large status: Eta, University of Denver; Iota, Syracuse University; Kappa, University of Michigan; Lambda, Northwestern University; Psi, University of Southern California; Omega, George

Peabody College for Teachers; Alpha Iota, University of Colorado; and Alpha Xi, Hunter College of the City University of New York. In addition, Chi Chapter, Pennsylvania State University, and Tau Chapter, Columbia University, were inactive chapters.

### **Publications**

Dr. Rosemarie McCauley continued as editor of the *Business Education Index*, and Dr. Oleen Henson remained as editor of *The Delta Pi Epsilon Journal*.

Rapid Reader No. 4, *Teaching Shorthand*, by Dr. Leona Gallion, was published in this biennium. Also published in the biennium were *Index to Doctoral Dissertations*, 1975-1980 by Harves Rahe and *Effective Evaluation in Business Education* by B. W. Stehr.

The following documents resulting from the national word processing study were published in 1981: *A Report of the National Word Processing Research Study of Delta Pi Epsilon* and *Summary Report of the National Study of Word Processing Installations in Selected Business Organizations*. These reports were prepared by Jolene D. Scriven, Jeanne L. Holley, Kathleen P. Wagoner, and Richard D. Brown.

### **Policies Commission**

The Policies Commission for Business and Economic Education completed the following statements in the 1980-1981 biennium: "This We Believe About the Rights and Responsibilities of Business Educators in Mainstreaming," "This We Believe About the Role of Business Education in Adult and Continuing Education," "This We Believe About the Role of Business Education in the Teaching of Basic Skills to Meet Graduation Requirements," and "This We Believe About the Value of a Business Education."

### **Other Events**

A revised chapter officer installation and new member initiation rituals book was distributed to the chapters.

In February, 1980, at a special meeting of the DPE National Executive Board and DPE National Office staff in St. Peter, Minnesota, Dr. Ellis J. Jones, National Executive Secretary, presented to Dr. R. DerMont Bell, National President, an official national podium banner for use at DPE functions. The banner was made of gold lamé letters on a background of black velvet with gold-colored cord and tassels setting off the banner as it hangs from a brass rod. Karen Jones Wojahn and Janet Jones, daughter and wife, respectively, of DPE's Executive Director, made the banner from a pattern designed by David H. Kane, Beta Epsilon Chapter.

### **Twenty-third National Council**

The twenty-third National Council meeting was November 5-7, 1981, in Milwaukee. The following actions were taken at this Council meeting:

1. Delta Pi Epsilon became “society” instead of a “fraternity.” The official description now is “a national honorary professional graduate society in business education.”
2. The Council voted to change the place of incorporation of national Delta Pi Epsilon from New York (where it was incorporated in 1936) to Minnesota.
3. The “Interchapter Relations Committee” became the “Interchapter Activities Committee.”
4. The “Service Projects Committee” was changed to “Chapter Awards Committee” with the obligation to “plan, encourage, and coordinate awards for (a) chapter research projects, (b) chapter service projects, and (c) outstanding chapter recognition.”
5. The Long-Range Planning Committee was dissolved, and the work of this committee was assigned to the National Executive Board.
6. The Council approved a recommendation to be voted on by the chapters that “at institutions where there is no faculty member who can or who is willing to serve as the chapter sponsor, the chapter executive committee should request direction from the National Executive Board.”
7. The Council changed membership requirements to read “completion of eight semester hours of graduate work in institutions that are accredited by the regional accrediting agency of the Commission on Higher Education.”
8. The Council added a new national standing committee: Membership Development Committee.

## **The 1982-1983 Biennium**

### **Charles R. Hopkins Stresses Professionalism**

#### **National Executive Board**

At the twenty-third DPE National Council meeting in Milwaukee in November, 1981, the following national officers were elected: Charles R. Hopkins, President; Jo Ann Hennington, Vice President; Jolene D. Scriven, Secretary; Ann Brehm, Treasurer; Robert B. Mitchell, Historian; and R. DerMont Bell, Past President. Ellis J. Jones was named by the Executive Board as the National Executive Secretary.

The theme for 1982-1983 was “Reflect Professionalism Through Delta Pi Epsilon.”

The National Executive Board met four times in 1982: Minneapolis, Washington, Fort Worth, and Oxford (Mississippi). In 1983, the Board met four times: Philadelphia, San Antonio, San Mateo (California), and Omaha.

## Membership

The membership in National Delta Pi Epsilon in 1982 was: active, 8,574; honorary, 253; life, 1,154; emeritus, 68; inactive, 12,954; transfer, 1,102; and other, 39. New initiates in 1982 numbered 524.

The 1983 membership was: active, 8,434; honorary, 256; life, 1,199; emeritus, 85; inactive, 13,575; transfer, 1,125; and other, 30. In 1983, 580 new members were initiated.

At the 1983 National Council meeting, the delegates voted to institute new membership requirements. These requirements are:

a. Any person who meets the following qualifications is eligible for candidacy to membership in this Society:

- (1) Holds a bachelor's degree from an accredited institution.
- (2) Completion of eight semester hours of graduate work in business education, or related business teacher education courses in institutions in which chapters have been formed, with an average grade in these eight semester hours of credit of at least B or 85 percent.
- (3) Evidence of business education as the candidate's field of interest.

b. Qualifications for initiation may also be met by satisfying one of the sets of qualifications in the following section.

c. At-large chapters may initiate any person who meets one of the following sets of qualifications:

- (1) The holding of a master's degree from an institution that is accredited by the Regional Accrediting Agency of the Commission on Higher Education and three years of successful experience in the teaching, supervision, or administration of business related subjects. Or,
- (2) (a) The holding of a bachelor's degree in business education from an accredited institution;
- (b) Completion of eight semester hours, with a B average, of graduate work in professional education, vocational-technical education, business education, distributive education, or other related business disciplines in an institution that is accredited by the Regional Accrediting Agency of the Commission on Higher Education;
- (c) And either three years of successful experience in the teaching, supervision, or administration of business related subjects, or three years of successful business work experience.

d. Any member of the business education instructional and supervisory staff at which a chapter is located is eligible for candidacy.

e. Outstanding leaders in education and in business shall be eligible for honorary membership in the Society subject to conditions prescribed in the Bylaws.

f. Each chapter is authorized to add to these minimum qualifications any that it deems desirable.



## Research Activities

Dr. Blanche Ettinger received the 1982 DPE National Research Award for her research, "A Study of the Requirements and Business Training Procedures for Word Processing Personnel with Implications for Word Processing Curriculum Development in Two-Year Post-Secondary Institutions," completed in 1980.

The 1983 National Research Award was presented to Dr. Robert E. Loth for his 1981 study, "An Analysis of the Managerial Responsibilities and Educational Needs of Word Processing Managers with Implications for Future Word Processing Management Training."

The 1982 National Research Conference was held in Oxford, Mississippi, in November.

## Research Foundation

The following officers were elected in 1982 for the DPE Research Foundation Board: Padmakar M. Sapre, President; Adele F. Schrag, President Elect; Judith J. Lambrecht, Secretary; Eugene D. Wyllie, Treasurer; and Gayle Stelter, Executive Secretary.

The DPE Research Foundation Inc. announced grants for three research studies: "The Spelling Problems of High School Business Students" by B. Scot Ober; "The Effects of the Video-Display Terminal upon Office Workers and the Office Environment" by Anne E. Schatz; and "Developing Job Related Reading Skills of Business Students" by B. June Schmidt.

The 1983 officers of the DPE Research Foundation Board were: Adele F. Schrag, President; Charles J. Inacker, President Elect; Stephen D. Lewis, Secretary; R. DerMont Bell, Treasurer; and Gayle Stelter, Executive Secretary.

## Publications

Dr. Judith Lambrecht was appointed editor of *The Delta Pi Epsilon Journal*. In addition, the Delta Pi Epsilon Editorial Board consisted of the *Journal* editor and the following members: Dr. Mildred F. Johnson, Cheyney State College, Cheney, Pennsylvania; Dr. Scot Ober, Arizona State University; Dr. Anthony G. Porreca, The Ohio State University; Dr. Patsy G. Smith, Georgia State University; and Dr. B. Bertha Wakin, State University of New York at Albany. The Editorial Board served as referees in screening articles for the *Journal*.

The DPE-sponsored publication, *Business and Office Education: Review and Synthesis of the Research* (3rd edition), was published by the National Center for Research in Vocational Education, Columbus, Ohio. The committee that prepared the manuscript consisted of Judith J. Lambrecht, Marianne J. D'Onofrio, L. Eugene Jones, and Patricia A. Merrier.

The 1983 National Council directed that *The Delta Pi Epsilon Journal* be published only two times each year instead of quarterly but that each future issue be expanded from the previous ones.

The final report of the first research study funded by the DPE Research Foundation was published in this biennium. This report, "The Most Frequently



Used Words and Phrases of Business Communication,” was prepared by Dr. Davern Perry.

At the February, 1983, National Executive Board meeting, the Board approved “Criteria, Guidelines, and Schedule for Chapter Research Project Awards, Chapter Service Project Awards, and Outstanding Chapter Awards.”

### **New Chapters**

Two new chapters were installed during the 1982-1983 biennium: GAMMA OMICRON CHAPTER, Oregon State University, Corvallis, October 28, 1983; and GAMMA PI CHAPTER, University of Arkansas, Fayetteville and Little Rock; November 17, 1983. These two chapters brought the total number of chapters to 88.

In 1982, Omicron Chapter, University of Iowa, and Beta Epsilon Chapter, San Jose State University, were designated “at-large” chapters, bringing the number of at-large chapters to 10, plus two inactive chapters.

### **Distinguished Lectures**

The distinguished lecturer for 1982 was Dean F. Scheff, President and Chief Executive Officer of CPT Corporation. His address, delivered at the second general session of the 1982 NBEA Convention, was entitled “Information Processing—The Future Is Now.”

The 1983 distinguished lecturer was John V. Roach, President, Chief Executive Officer and Chairman of the Board of Tandy Corporation. His address was entitled “America’s Educational Challenge.”

### **Policies Commission**

Four policy statements were released during the 1982-1983 biennium by the Policies Commission for Business and Economic Education: “This We Believe About the Role of Student Organizations in Business Education,” “This We Believe About Word Processing in Business Education,” “This We Believe About Business Data Processing in Business Education,” and “This We Believe About Personal Finance in Business Education.”

In addition, one position paper was released by the Policies Commission: “Information Processing in Business Education, A Position Paper.”

### **Chapter Awards**

Delta Pi Epsilon gave three types of chapter awards at the 1983 National Council meeting in Omaha: chapter service projects, chapter research projects, and outstanding chapter awards.

### **Other Events**

The Delta Pi Epsilon Corporation in New York was dissolved, and the appropriate forms for this dissolution were signed by the DPE National Executive Board in

November, 1983. Delta Pi Epsilon was reincorporated in the State of Minnesota during the 1982-1983 biennium. The Minnesota Secretary of State issued a Certificate of Incorporation to Delta Pi Epsilon. At the 1983 National Council meeting, the title “Executive Secretary” was changed to “Executive Director.” During the 1982-1983 biennium, the Internal Revenue Service gave Delta Pi Epsilon a special designation that permits contributions to DPE to be deductible contributions.

Delta Pi Epsilon chapters approved a provision that empowers the National Executive Board to appoint chapter sponsors in unusual situations. A national ad hoc committee was appointed to recommend marketing strategies for DPE publications.

In 1982, DPE cosponsored and participated in National Education for Business Week.

### **Twenty-fourth National Council**

The twenty-fourth DPE National Council meeting was held in Omaha, November 9-12, 1983. The 1983 Council voted to change the National Constitution and Bylaws in the following ways:

1. The “Chapter Awards Program” was changed to “Chapter Recognition Program.”
2. The executive committee of each chapter will appoint the sponsor(s) of the chapter in consultation with the sponsoring institution, rather than having the chapter elect the sponsor. The appointment is to be reviewed each three years.
3. The term “National Constitution and Bylaws” was changed to “National Governing Documents.”
4. The Council created an annual award for the outstanding master’s thesis submitted for judging.

## **The 1984-1985 Biennium**

### **Jo Ann Hennington Closes Out the First Fifty Years**

#### **National Executive Board**

The 1983 National Council in Omaha elected the following national officers for 1984-1985: Jo Ann Hennington, President; Jolene D. Scriven, Vice President; Joan Rieman Most, Secretary; Ann M. Hanson, Treasurer; Ginger Rose, Historian; Charles R. Hopkins, Past President; and Ellis J. Jones, Executive Director.

In 1984, the Executive Board met in Austin, Chicago, Minneapolis, and Denver. In 1985, the Board met in Atlanta, Las Vegas, San Francisco, and St. Louis.

In January, 1984, Russell G. DeVriendt was appointed national treasurer to replace Ann M. Hanson, who had resigned.

The theme selected for the 1984-1985 biennium was "Recognizing and Rewarding Research."

### **Research Activities**

The 1984 DPE National Research Award was presented to Dr. Elizabeth A. Regan for her 1982 study, "Behavioral and Organizational Issues of Office Automation Technology." In 1985, the Research Award was presented to Dr. Charlotte Graves for her study, "Concepts Needed by Managerial Personnel in Automated Offices as Perceived by Office Systems Consultants and Collegiate Business Faculty," completed in 1983.

The 1984 DPE National Research Conference was held in Denver, Colorado, November 7-10, 1984.

In 1985, *Tips* was published for the first time. This publication had been approved by the 1984 National Council members in Omaha. *Tips* is designed to be a summary of action research on topics of current concern to business teachers.

The National Executive Board approved, in July, 1984, the procedures for selecting and presenting a DPE research award for an outstanding business education master's degree thesis completed in the United States.

### **Research Foundation**

During 1984, the following business educators served as officers of the DPE Research Foundation: Charles J. Inacker, President; James C. Bennett, President-Elect; Marcia Anderson, Secretary; and B. Bertha Wakin, Treasurer. Other members of the Board of Directors in 1984 were: R. DerMont Bell, Charles R. Hopkins, Stephen D. Lewis, Joe M. Pullis, E. E. Wanous, David H. Weaver, and Ellis J. Jones (ex officio). Gayle A. Stelter served again as executive director.

The 1985 officers of the Research Foundation were: James C. Bennett; President; E. E. Wanous, President-Elect; Marcia Anderson, Secretary; and David H. Weaver, Treasurer.

In the 1984-1985 biennium, the DPE Research Foundation and National Delta Pi Epsilon published the Foundation-funded research study of Scot Ober, *The Spelling Problems Among First-Year Typewriting Students Throughout the United States*.

### **New Chapters**

Two new chapters of Delta Pi Epsilon were installed in 1984: GAMMA RHO CHAPTER, University of South Florida, Tampa, April 7, 1984; and GAMMA SIGMA CHAPTER, Central Michigan University, Mount Pleasant, September 22, 1984.

In April, 1985, the National Executive Board approved a request from Upsilon Chapter, University of Mississippi, that the chapter be granted at-large status.

## Distinguished Lecturers

The 1984 distinguished lecture was presented by Kenneth Monfort, President and Chief Executive Officer of Monfort of Colorado. This lecture, entitled “The Challenge of Entrepreneurship,” was delivered at the second general session of the 1984 NBEA Convention. Monfort’s address was published in the Fall, 1984, issue of *The Delta Pi Epsilon Journal*. Publication was made possible by a grant, through Alpha Rho Chapter, from the Laura and McKee Fisk Publication Trust Fund.

The 1985 distinguished lecture was presented by Andrew S. Grove, President, Intel Corporation. Grove’s address, “High Output Management: Its Impact on Corporate Performance,” was presented at the second general session of the 1985 NBEA Convention.

## Membership

The 1984 DPE membership consisted of the following: active, 8,343; honorary, 258; life, 1,249; emeritus, 97; inactive, 14,224; and transfer, 1,157. In 1984, 770 new members were initiated. At the end of 1984, a total of 24,171 members had been initiated into DPE since it was founded in 1936.

In February, 1985, the National Executive Board voted to change the procedures for calculating membership percentages. Beginning January 1, 1985, all new initiates are included in membership percentage calculations. Previously, percentages were based on membership renewals only.

## Publications

The 1983 National Council voted to publish *The Delta Pi Epsilon Journal* two times each year instead of quarterly and to enlarge each of the two issues. In November, 1983, the National Executive Board directed that the two issues would be in April and in October. Dr. Judith J. Lambrecht continued as editor of *The Delta Pi Epsilon Journal*. Reviewers for the Journal for the 1984-1985 biennium were: Drs. Carol L. Dierks, Scot Ober, Anthony G. Porreca, Annell L. Simcoe, and B. June Schmidt.

Dr. Rosemarie McCauley again served as editor of the *Business Education Index* during the biennium.

Rapid Reader No. 6, *Teaching Business Communication*, was published in the 1984-1985 biennium, as was Rapid Reader No. 5, *Teaching Keyboarding/Typewriting*.

The Policies Commission for Business and Economic Education published five official policy statements in the biennium: “This We Believe About Computer Literacy” (1984), “This We Believe About Keyboarding” (1984), “This We Believe About the Teaching of Business Communication” (1984), “This We Believe About Linkages with Business” (1985), and “This We Believe About the Role of Business Education in the Comprehensive High School” (1985). The last report was an update of a previous statement by the Policies Commission.

## Golden Anniversary Committee

President Jo Ann Hennington had appointed in 1984 an *ad hoc* Golden Anniversary Committee to plan activities to commemorate Delta Pi Epsilon's 50 years of scholarship, leadership, and cooperation in business education through research, teaching, and other professional activities. The Golden Anniversary Committee consisted of Doris H. Crank, Chairperson; Calfrey C. Calhoun, Alice Yetka, Floyd L. Crank, Padmakar M. Sapre, Kenneth Brown, and Jolene D. Scriven, Liaison.

In 1984, the National Executive Board approved the following recommendations from the Golden Anniversary Committee:

1. The Golden Anniversary theme: "Delta Pi Epsilon, A Golden Past: Foundation for the Future, 1936-1986.
2. An updated history of Delta Pi Epsilon as a chronicle of the 50 years. The Executive Board voted to publish this updated history as the first issue of *The Delta Pi Epsilon Journal* in 1986.
3. A special Golden Anniversary swag for the DPE banner.
4. Commemorative items of pens, candleholders, balloons, mugs, sun catchers, and placemats. These items are to be made available for purchase by DPE members.
5. A postage-meter stamp to commemorate the fiftieth anniversary.
6. Gold membership cards for 1985 and gold-colored stationery to be used by national officers.
7. Three major events during 1986 to commemorate the fiftieth anniversary: A "kickoff" meeting at Alpha Chapter in January; the Golden Anniversary Luncheon at NBEA; and the Golden Anniversary Research Conference.

## Other Items

In the 1984-1985 biennium, the Delta Pi Epsilon National Office purchased an IBM Personal Computer for use by the National Office staff. During the biennium, the National Executive Board appointed a National Office Contingency Planning *Ad Hoc* Committee.

The revised DPE National Governing Documents were available for distribution to the chapters in 1985.

On February 8, 1985, the DPE National Office received a letter from the Internal Revenue Service stating that Delta Pi Epsilon Inc. is approved for classification as a 501-C-3 organization, the designation for education societies. One implication of such a classification is that contributions to the society are tax deductible. This classification applies only to National Delta Pi Epsilon and not to the individual chapters.

### **Twenty-fifth National Council**

The twenty-fifth National Council was held in St. Louis on November 13-16, 1985.

## **Epilogue**

### **Looking Ahead**

As the members of Delta Pi Epsilon look ahead to another 50 years of service to business education, the prospects for growth in business education are somewhat uncertain. Educational reform movements regularly sweep the country, and legislative bodies are aggressive in passing laws governing such crucial educational matters as curricular offerings and teacher certification. The national officers of Delta Pi Epsilon face a major challenge as they guide the society toward the fulfillment of the ideals of Delta Pi Epsilon. National officers elected at the 1985 National Council meeting in St. Louis to serve for the 1986-1987 biennium are: Jolene D. Scriven, President; Scot Ober, Vice President; Judith J. Lambrecht, Secretary; Robert B. Mitchell, Treasurer; Ginger Rose, Historian; Jo Ann Hennington, Past President; and Ellis J. Jones, Executive Director. The officers were charged with the responsibility of directing the activities of the Society during the Golden Anniversary Year, 1986, and to initiate plans for continued service to business education during the next 50 years.

# THE HISTORY OF DELTA PI EPSILON 1986-2011

Robert B. Mitchell

Peter F. Meggison

## **The 1986-1987 Biennium The Golden Anniversary Jolene D. Scriven Celebrates the Past as a Foundation for the Future**

### **1986—A Year of Celebration**

The members of Delta Pi Epsilon celebrated the 50-year history of the Society throughout 1986. As written by Jolene D. Scriven, national president:

*The biennium began with a year-long celebration of Delta Pi Epsilon's Golden Anniversary at national, regional, state, and chapter DPE functions. Enthusiasm and fraternal camaraderie were evident everywhere. Members recognized that this special hallmark year provided a time to reflect on our history and to bask in the golden rays of a professional organization that continues to provide the opportunity for each member to rise to new heights in meeting the ideals of Delta Pi Epsilon—leadership, scholarship, and cooperation. (Delta Pi Epsilon National Office Bulletin, December, 1987, p. 1)*

### **National Executive Board**

The 1985 National Council in St. Louis, Missouri, elected the following national officers for the 1986-1987 biennium: Jolene D. Scriven, president; Scot Ober, vice president; Judith Lambrecht, secretary; Robert B. Mitchell, treasurer; Ginger A. Rose, historian; and Jo Ann Hennington, past president. Ellis J. Jones was reappointed executive director.

The National Executive Board met in 1986 in New York, New York; Hollywood, Florida; East Lansing, Michigan; and Chicago, Illinois. In 1987, in Richmond, Virginia; Boston, Massachusetts; DeKalb, Illinois; and Indianapolis, Indiana.

The theme for the 1986-1987 biennium was “A Golden Past: Foundation for the Future.”

---

Dr. Robert B. Mitchell is professor of Management in the College of Business at the University of Arkansas at Little Rock, Little Rock, Arkansas. He has served 24 years as executive director of Delta Pi Epsilon, 1988-2011.

Dr. Peter F. Meggison is professor of Computer Technology and Information Management at Massasoit Community College, Brockton, Massachusetts. He served as president of Delta Pi Epsilon, 1998-1999.



***Golden Anniversary National Executive Board***

*Seated (left to right): Jo Ann Hennington, past president;  
Jolene D. Scriven, president; Scot Ober, vice president.*

*Standing (left to right): Ellis J. Jones, executive director;  
Ginger Rose, historian; Robert B. Mitchell, treasurer;  
Judith J. Lambrecht, secretary.*

**Research Activities**

The 1986 DPE Doctoral Research Award was presented to Carolee Sormunen for her 1984 study at the University of Minnesota, "A Comparison of Two Methods for Teaching Keyboarding on the Microcomputer to Elementary School Level." Ann Cumba was presented the 1986 DPE Master's Research Award for her 1984 study at the University of Houston, "The Relationship Between Student Attitudes Toward the VOE Program and Selected Demographic Variables in Six Fort Bend County High Schools in Texas."

The 1987 DPE Doctoral Research Award was presented to Donna L. Kizzier for her 1985 study at the University of Nebraska, Lincoln, "Attitudes of Office Personnel Toward Advanced Office Technology." Joyce Sheets was presented the 1987 DPE Master's Research Award for her 1985 study at Southern Illinois University Carbondale, "A Comparison of Students' Perceptions of Drill Work on Electric Typewriters and on Microcomputers."



The 1986 DPE National Research Conference was held in Chicago, Illinois, November 12-15.

### **Research Foundation**

The 1986 members of the DPE Research Foundation, Inc., Board of Directors were E. E. Wanous, president; Betty J. Brown, president elect; Charles R. Hopkins, secretary; David H. Weaver, treasurer; Marcia A. Anderson-Yates; Kenneth Brown; Jo Ann Hennington; Anthony Olinzock; Ellis J. Jones, ex officio; and Gayle A. Stelter, executive director. The following business educators served in 1987: Betty J. Brown, president; Charles Hopkins, president elect; Kenneth W. Brown, secretary; Marcia Anderson-Yates, treasurer; Marianne J. D'Onofrio; Jo Ann Hennington; C. LeMoyné Smith; David H. Weaver; Ellis J. Jones, ex officio; and Gayle A. Stelter, executive director.

The Foundation awarded three grants during the biennium, totaling \$11,079.

### **Chapter Activities and Awards**

Three new chapters were installed in 1986: Gamma Tau, University of Central Arkansas, Conway, Arkansas, April 12; Gamma Upsilon, Robert Morris College, Coraopolis, Pennsylvania, July 30; and Gamma Phi, Ellensburg, Washington, October 10.

Gamma Eta Chapter (Middle Tennessee State University) received the Chapter Service Projects Award; Beta Theta Chapter (University of Wisconsin, Whitewater) received the Chapter Research Projects Award; and Beta Omicron Chapter (Southern Illinois University Carbondale) received the Chapter Recognition Award.

The John Robert Gregg Award was presented to Robert P. Poland and Walter A. Brower.

### **Distinguished Lecturers**

The 1986 Distinguished Lecture was presented by Richard G. Capen, Jr., chairman of the board of directors and publisher of *The Miami Herald*. This presentation, "Newspapers: A Bright Future," was delivered at the second general session of the NBEA Convention. This address was published in Volume 28, No. 3 (1986), of *The Delta Pi Epsilon Journal*.

The 1987 Distinguished Lecture was presented by John Sculley, chief executive officer of Apple, Inc. This address, "Looking Forward to the Twenty-First Century," was published in Volume 29, No. 3 (1987), of *The Delta Pi Epsilon Journal*. Publication of distinguished lectures was made possible by a grant through the Alpha Rho Chapter, from the Laura and McKee Fisk Publication Trust Fund.

## **Membership**

The 1986 DPE membership consisted of active, 7,451; honorary, 258; life, 1,344; and emeritus, 114. In 1986, 660 new members were initiated. At the end of 1986, a total of 25,306 members had been initiated into Delta Pi Epsilon.

The 1987 DPE membership consisted of active, 7,325; honorary, 262; life, 1,396; and emeritus, 125. In 1987, 510 members were initiated. At the end of 1987, a total of 25,816 members had been initiated into the Society since it was founded in 1936.

## **Publications**

Issue one of the 1986 *Delta Pi Epsilon Journal* was dedicated to the 50<sup>th</sup> Anniversary of the Society. The publication highlighted the chronology of Delta Pi Epsilon in an article authored by Floyd L. Crank.

In 1986 Anthony G. Porreca was appointed to serve as editor of *The Delta Pi Epsilon Journal*. The editorial board consisted of Beverly E. Cross, assistant editor; M. L. "Kitty" Driehorst, assistant editor; Clora Mae Baker, editorial assistant; Marianne J. D'Onofrio; Les R. Dlabay; Mary Ellen Guffey; Carol A. Mitzner; Patricia A. Murranka; Sharon Lund O'Neil; George J. Petrello; B. June Schmidt; Annell Lacy Simcoe; and Edna Cole Ward.

Rosemarie McCauley continued to serve as editor of the *Business Education Index* for the biennium. In December, 1987, she ended an 11-year term as editor.

*Index to Doctoral Dissertations in Business Education, 1980-1985*, edited by Roger L. Luft and Janice L. Schoen, and *The 1986 Golden Anniversary National Business Education Research Conference Proceedings* were published in 1986. *Office Skills Inventory (OSI)*, developed by Shirley Kuiper and Cheryl M. Luke, was published in 1987.

During the biennium 11 national office bulletins were published by the DPE national office.

## **Policies Commission for Business and Economic Education**

The Policies Commission for Business and Economic Education published four policy statements during the biennium: "This We Believe About the Future of Business Education," "This We Believe About the Role of Business Education in Influencing Legislation," "This We Believe About Research in Business Education," and "This We Believe About the Role of Business Educators in Teaching Entrepreneurship." In addition one official plan of action was published in 1987: "Business Teacher Education: A Commitment to Excellence—A Plan of Action." The DPE appointees to the Commission were Jo Ann Hennington, Robert Mitchell, Al Rossetti, and Jolene Scriven. Ellis J. Jones was an ex officio member.

## **Joint Committee on Economic Education**

The Joint Committee on Economic Education, an advisory group composed of persons appointed by DPE and the NBEA, hosted meetings during the 1986 and

1987 NBEA conventions and published in “Economic Education Resources for Business Education.” DPE appointees to the committee were Wanda Blockhus, Charles R. Hopkins, Robert Ristau, and David Graf.

### **Twenty-sixth National Council**

The twenty-sixth DPE National Council meeting was held November 12-14, 1987, in Indianapolis, Indiana. The Council designated the Publications Committee as the editorial board for TIPS and created the Research Conference Committee to be responsible for implementing the national research conference (previously the Research Projects Committee was responsible for this activity), among other actions.

### **Change of Society Executive Director**

Ellis J. Jones retired as executive director of Delta Pi Epsilon on December 31, 1987, after serving the Society for 22 years. During 1987 he was honored at special DPE events including the DPE luncheon at the NBEA convention in Boston, a special banquet and presentation at the 1987 National Council meeting in Indianapolis, and the DPE luncheon at the American Vocational Association Convention in Las Vegas.

In April, 1987, National President Jolene Scriven announced the appointment of Robert B. Mitchell, University of Arkansas at Little Rock, to the position of National Executive Director-elect of the Society.

\* \* \*

## **Delta Pi Epsilon A Golden Past: Foundation for the Future 1936-1986**

*Let me tell you a story about a Golden Past and a Golden Future. A man often walked along the seashore pondering his future, his past, and the many different turns his life had taken. During one such walk a voice out of the sky said, “Pick up some pebbles; put them in your pocket; and tomorrow you will be both glad and sorry.” He picked up some pebbles and put them in his pocket. The next day the pebbles had turned to gold! The man was both glad and sorry—glad that he had taken some—sorry that he hadn’t taken more. So it is with business education, and so it is with Delta Pi Epsilon. (Inaugural address of National President Jolene Scriven; 25th National Council Minutes and Report, 1985, pp. 194-195)*

## **The 1988-1989 Biennium**

### **Scot Ober Focuses on the Significance of Research**

*DPE is a distinctive organization in many ways—we're an honorary society, we're a graduate society, and we're a business education society. No other organization can make those three statements. But the one thing that truly sets Delta Pi Epsilon apart from our sister organizations is our emphasis on research. All four of the objectives of our Society contain the word **research**.*

- 1. To improve business education research;*
  - 2. To encourage research;*
  - 3. To recognize exceptional research achievement;*
  - 4. To publicize research in business education.*
- (Inaugural Address by National President Scot Ober, *Delta Pi Epsilon Bulletin*, January 1988, p. 1)

### **1988—Delta Pi Epsilon National Office Moves to Little Rock, Arkansas**

Robert B. Mitchell assumed the role of executive director on January 1, 1988, with the DPE National Office relocated to Little Rock, Arkansas. Donna Brunt was appointed office manager.

### **National Executive Board**

The 1987 National Council elected the following national officers for the 1988-1989 biennium: Scot Ober, president; Charles J. Inacker, vice president; Pauline A. Newton, secretary; Ginger A. Rose, treasurer; Sharon A. Dorner-Andelora, historian; and Jolene D. Scriven, past president. Robert B. Mitchell was appointed executive director.

The National Executive Board met in 1988 in Atlanta, Georgia; Denver, Colorado; Nashville, Tennessee, and Ft. Worth, Texas. In 1989 the board met in Washington, D.C.; Chicago, Illinois; San Jose, California; and Pittsburgh, Pennsylvania.

The theme for the 1988-1989 biennium was “Delta Pi Epsilon and Research: The Significant Difference.”

### **Research Activities**

The 1988 DPE Doctoral Research Award was presented to Vivian Arnold for her 1986 study at the University of Kentucky, “A Comparison of Three Experimental Approaches to Teaching Proofreading to Third-Semester Typewriting Students at the High School Level.” Mary Shroyer was presented the 1988 DPE

Master's Research Award for her 1986 study at Central Michigan University, "A Comparison of Speed and Accuracy of First-Year Word Processing Students on Electric Typewriters vs. Microcomputers with Word Processing Software."

The 1989 DPE Doctoral Research Award was presented to Eleanor J. Davidson for her 1987 study at New York University, "Women in Information Processing Careers: Sex-Role Identity, Attitudes Toward Women, and Other Selected Variables." Karen K. Seibel was presented the 1989 DPE Master's Research Award for her 1988 study at Virginia Polytechnic Institute and State University, "Analysis of Errors Located by Business Students in Hardcopy Versus Softcopy Documents."

The 1988 DPE National Research Conference was held in Ft. Worth, Texas, November 10-12; the conference chairperson was Carmela Kingston.

### **Research Foundation**

The 1988 members of the DPE Research Foundation, Inc., Board of Directors were Charles R. Hopkins, president; David H. Weaver, president-elect; Marianne J. D'Onofrio, secretary; Kenneth Brown, treasurer; Betty C. Fry; Jolene D. Scriven; C. LeMoyné Smith; Gayle A. Stelter, executive director; and Robert B. Mitchell, ex officio. The following business educators served in 1989: David H. Weaver, president; Annell Lacy Simcoe, president elect; Jolene D. Scriven, secretary; Marianne J. D'Onofrio, treasurer; Kenneth W. Brown; Betty C. Fry; B. June Schmidt; C. LeMoyné Smith; Gayle A. Stelter, executive director; and Robert B. Mitchell, ex officio.

The Foundation awarded four grants during the biennium, totaling \$7,727.

### **Chapter Activities and Awards**

Gamma Chi Chapter was installed on September 17, 1988, at the University of Missouri—Columbia, Columbia, Missouri.

Beta Theta Chapter (University of Wisconsin, Whitewater) received the Chapter Service Projects Award; Beta Iota Chapter (Illinois State University, Normal) received the Chapter Research Projects Award; and Gamma Upsilon Chapter (Robert Morris College) received the Chapter Recognition Award.

The John Robert Gregg Award was presented to Leonard J. West and Anne L. Matthews.

### **Distinguished Lecturers**

The 1988 Distinguished Lecture was cancelled due to inclement weather. The 1989 Distinguished Lecture was presented by Thomas Haggai, chief executive officer, IGA, Inc. This lecture, "The Cavalry Ain't Comin'," was delivered at the second general session of the NBEA Convention. This address was published in Volume 31, No. 3 (1989), of *The Delta Pi Epsilon Journal*.

## **Membership**

The 1988 DPE membership consisted of active, 7,116; honorary, 177; life, 1,163; and emeritus, 135. In 1988, 455 new members were initiated. At the end of 1988, a total of 26,271 members had been initiated into Delta Pi Epsilon.

The 1989 DPE membership consisted of active, 6,625; honorary, 175; life, 1,173; and emeritus, 173. In 1989, 360 members were initiated. At the end of 1989, a total of 26,631 members had been initiated into the Society since it was founded in 1936.

## **Publications**

B. June Schmidt was appointed to serve as editor of *The Delta Pi Epsilon Journal*. The editorial board consisted of Margaret S. Kirby, assistant editor; B. Anne Rowe, assistant editor; Jeanann S. Boyce; Marianne J. D'Onofrio; Les R. Dlabay; Roger Luft; Peter F. Meggison; Carol A. Mitzner; Sharon Lund O'Neil; Carolee Sormunen; Vickie J. Stout; and Donald K. Zahn.

Carol A. Lundgren was appointed editor of the *Business Education Index* for the biennium.

The serial publication *TIPS* was renamed *Instructional Strategies: An Applied Research Series* in 1989.

New publications included *Needed Research in Business Education*, 4<sup>th</sup> edition, 1988; *A National Study of Instructional Practices and Perceptions of Elementary School Teachers About Typewriting/Keyboarding*, by Carolee Sormunen, Mary Ellen Adams, Lila Prigge, and Diane Berg, 1989; and *Research Conference Proceedings*, 1988.

During the biennium 3 newsletters and 14 national office bulletins were published by the DPE national office.

## **Policies Commission for Business and Economic Education**

The Policies Commission for Business and Economic Education published four policy statements during the biennium: "This We Believe About Business Teacher Education," "This We Believe About the Promotion of Business Education," "This We Believe About the Impact of Change Due to Information Technologies," and "This We Believe About the Role of Business Education as a Component of General Education." The DPE appointees to the Commission were Jo Ann Hennington, Mary Margaret Hosler, Scot Ober, and Al Rossetti. Robert B. Mitchell was an ex officio member.

## **Joint Committee on Economic Education**

Wanda Blockhus, Thomas Haynes, and Roger Luft represented DPE on the Joint Committee on Economic Education.

## Twenty-seventh National Council

The twenty-seventh DPE National Council meeting was held November 2-5, 1989, in Pittsburgh, Pennsylvania. Actions of the Council included the following: changes in membership eligibility; establishment of the Theodore Woodward Chapter Leadership Award; establishment of an editor/editorial board for *Instructional Strategies: An Applied Research Series*, and establishment of an award for outstanding research conference papers.

\* \* \*

We are a learned society—a community of scholars. And we must never forget that, nor the responsibility it entails. Our research mission is the unique contribution we can make to our profession. It is the significant difference we can make. (The State of the Society address, National President Scot Ober, *Delta Pi Epsilon Bulletin*, December, 1989, p. 4)

## The 1990-1991 Biennium

### Charles J. Inacker Emphasizes Research Beyond Technology

*Delta Pi Epsilon is, and will continue to be, a major player in the “new and loosely defined” business education. In this role Delta Pi Epsilon must take the lead in promoting more proactive research and begin to produce research which will permit us to stop following practice and to begin to lead the new developments in our profession. Our research efforts must be more meaningful and more scholarly and, most importantly, must contribute significantly to the improvement of learning and the teaching of how to learn.* (Inaugural Address by National President Charles J. Inacker, *Delta Pi Epsilon Bulletin*, Winter, 1990, p. 3)

## National Executive Board

The 1989 National Council elected the following national officers for the 1990-1991 biennium: Charles J. Inacker, president; Betty J. Brown, vice president; Marian C. Crawford, secretary; David J. Hyslop, treasurer; Iris W. Johnson, historian; and Scot Ober, past president. Robert B. Mitchell was reappointed Executive Director.

In 1990 the Executive Board met in Little Rock, Arkansas; Reno, Nevada; Pittsburgh, Pennsylvania; and Columbus, Ohio. In 1991, in Los Angeles, California; Nashville, Tennessee; Minneapolis, Minnesota; and Little Rock, Arkansas.

The theme of the 1990-1991 biennium was “Expanding Our Research Beyond the Technology.”



## **Research Activities**

The 1990 Doctoral Research Award was presented to Sherry Hellmuth for her 1988 study at Northern Illinois University, "A Comparison of the Effects of First-Year High School Accounting on Student Performance on Selected Concepts Taught in First-Semester College Accounting." Mary Jean Evans received the 1990 Master's Research Award for her 1989 study at Virginia Polytechnic Institute and State University, "An Analysis of Accounting Tests Used in 1989 Virginia FBLA Regional Competitions."

The 1991 Doctoral Research Award was presented to Randy L. Joyner for his 1989 study at Virginia Polytechnic Institute and State University, "A Comparison of Errors Detected: Video Display Terminals vs. Hard Copy." The 1991 Master's Research Award was presented to Carol L. Jennings for her 1990 study at Virginia Polytechnic Institute and State University, "An Update of the Chronology of Business Education."

The 1990 Research Conference was held in Columbus, Ohio, November 15-17. The conference chairperson was Gail Modlin.

## **Research Foundation**

The 1990 members of the DPE Research Foundation, Inc., Board of Directors were Annell Lacy Simcoe, president; B. June Schmidt, vice president; Betty C. Fry, secretary; Kenneth W. Brown, treasurer; Betty J. Brown; Ellis J. Jones; Arthur H. Rubin; G. Whitney Voiers; Gayle A. Stelter, executive director; and Robert B. Mitchell, ex officio. The following business educators served in 1991: B. June Schmidt, president; Betty J. Brown, president-elect; Ellis J. Jones, secretary; Kenneth W. Brown, treasurer; Arthur H. Rubin; Gayle A. Stelter, executive director; and Robert B. Mitchell, ex officio.

The Foundation awarded a record-high 14 grants in the biennium, totaling \$35,490.

## **Chapter Activities and Awards**

One new chapter was installed in 1991: Gamma Psi (East Carolina University), Greenville, North Carolina, February 22.

Alpha Theta (University of Texas) was declared inactive in 1990; and Tau Chapter (Columbia University) was declared inactive in 1991.

Beta Epsilon Chapter (San Jose State University) received the Chapter Research Projects Award; Beta Theta Chapter (University of Wisconsin-Whitewater) and Beta Omicron Chapter (Southern Illinois University Carbondale) received the Chapter Newsletter Award; and Beta Omicron Chapter (Southern Illinois University Carbondale) received the Chapter Recognition Award.

The John Robert Gregg Award was presented to Wanda A. Blockhus and Lloyd W. Bartholome.

At the 1991 National Council meeting, the delegates voted to institute new procedures relative to the establishment of new chapters:

- a. Any chapter may select a name independent of its institutional affiliation, with notification of present regional chapters so that any territorial disagreements can be resolved before approving a new chapter designation.
- b. Where no chapter currently exists, DPE members within a geographical area (i.e., city, region of state, state) be allowed to submit a petition to become a new chapter identified by new Greek letters and the designated area. Petitioning requirements and procedures would be the same for campus-based and noncampus-based chapters.
- c. With the approval of the National Executive Board, active chapters in the same geographical area could consolidate to form one chapter. The individual chapters would then be declared inactive and the new chapter would be assigned the next available Greek-letter(s) designation, along with a descriptive designation.

### **Distinguished Lecturers**

The 1990 Distinguished Lecture was presented by C. J. “Pete” Silas, chairman and chief executive officer of Phillips Petroleum Company. His presentation, “Talking to Main Street: Business Education’s Greatest Challenge,” was printed in Volume 32, No. 3 (1990), of *The Delta Pi Epsilon Journal*.

The 1991 Distinguished Lecture was presented by Stephen L. Brown, president and chief operations manager and vice chairman of the board of John Hancock Financial Services, at the second general session of the NBEA Convention. His presentation was entitled, “Possible Futures of Public Education.” The text of his speech was printed in Volume 33, No. 1, (1991) of *The Delta Pi Epsilon Journal*.

### **Membership**

The 1990 DPE membership consisted of active, 6,422; honorary, 169; life, 1,170; and emeritus, 205. In 1991, 399 members were initiated. At the end of 1991, 27,030 members had been initiated into Delta Pi Epsilon.

The 1991 membership consisted of active, 5,964; honorary, 157; life, 1,266; and emeritus, 236. In 1992, 334 members were initiated. At the end of 1992, 27,364 members had been initiated into the Society since it was founded in 1936.

### **Publications**

Marianne J. D’Onofrio was appointed editor of *The Delta Pi Epsilon Journal*, with the following editorial board: Rita B. Olsen, assistant editor; Donna R. Everett; Melvin Franz; and Daniel Wunsch.

Carol A. Lundgren remained editor of the *Business Education Index*.

F. Stanford Wayne was appointed editor of *Instructional Strategies: An Applied Research Series*. The editorial board consisted of Isabelle Blanco-Castro, Fran Brady, Anna Burford, Paula D. Cannon, David Lynch, Peter F. Meggison, Arnola C. Ownby, Heidi R. Perreault, Pamela S. Pfundstein, Robert Schramm, James C. Scott, Ginger Rose, and Kathy A. White.

*Research Methods in Business Education* by Padmakar M. Sapre was published in 1990.

*Index to Doctoral Dissertations in Business and Related Topical Areas, 1986-1990 Supplement* by Janice Schoen Henry and Marcia Anderson-Yates was published in 1991.

*Research Conference Proceedings* was published in 1990.

During the biennium five newsletters and seven national office bulletins were published by the DPE national office.

### **Policies Commission for Business and Economic Education**

The Policies Commission for Business and Economic Education published three statements during the biennium: "This We Believe About the Role of the Business Education State Supervisor," "This We Believe About At-Risk Students in the Business Education Program," and "This We Believe About Valuing Cultural Diversity in Business Education." The DPE appointees to the Commission were Mary Margaret Hosler, Scot Ober, Robert Poland, and Ginger Rose. Charles J. Inacker and Robert B. Mitchell were ex officio members.

### **Joint Committee on Economic Education**

Wanda Blockhus, Thomas Haynes, and Roger Luft represented DPE on the Joint Committee on Economic Education.

### **Twenty-eighth National Council**

The twenty-eighth DPE National Council meeting was held in Little Rock, Arkansas, November 13-16, 1991. The 1991 Council voted to change the national governing documents in the following ways:

1. The DPE national president would also serve as president of the DPE Research Foundation; the national vice president and national secretary would serve as directors of the DPE Research Foundation.
2. Only one chapter secretary would be required ("Corresponding Secretary" and "Recording Secretary" would be replaced with "Secretary").

\* \* \*

*Delta Pi Epsilon faces many challenges during the next biennium and those to follow. History, I believe, is on our side. Because of the strong foundation built over the past 55 years, Delta Pi Epsilon is in a position to meet these challenges. Now we have the know-how to plot the right course. I hope we have the will, the daring, and the imagination to do it. Delta Pi Epsilon is ripe for change . . .* (The State of the Society address, National President Charles J. Inacker, *Delta Pi Epsilon Bulletin*, January, 1992, p. 8)

## **The 1992-1993 Biennium**

### **Betty J. Brown Recommits to the Future of DPE**

*DPE members have long been among those who were recognized as leading researchers in business education. They also have pledged themselves when they became members and renewed their pledge in chapter meetings to apply research to their field. Research is a primary tool for improving our field and its practices. Without research findings being applied to business education, it becomes a static, passive area of study which loses ground among the competition for learners and resources. (Inaugural Address by National President Betty J. Brown, *Delta Pi Epsilon Bulletin*, January, 1992, p. 3)*

### **National Executive Board**

The 1991 National Council elected the following national officers for the 1992-1993 biennium: Betty J. Brown, president; Sharon Lund O'Neil, vice president; Marian C. Crawford, secretary; David J. Hyslop, treasurer; Peter F. Meggison, historian; and Charles J. Inacker, past president. Robert B. Mitchell was reappointed executive director.

In 1992 the executive board met in Cincinnati, Ohio; Boston, Massachusetts; and Los Angeles, California; in 1993 in Dallas, Texas; St. Louis, Missouri; and Kansas City, Missouri.

The theme of the 1992-1993 biennium was "Recommitment to Our Future."

### **Research Activities**

The 1992 Doctoral Research Award was presented to Paula E. Brown for her 1990 study at Northern Illinois University, "The Relationship Between Graphic Aids in a Business Report and Decision-Making and Cognitive Style of a Report Reader." The 1992 Master's Research Award was presented to Patsy Lynette Gabris for her 1991 study at Virginia Polytechnic Institute and State University, "Extent and Emphasis of Spreadsheet Instruction in Business Computer Applications Courses in Virginia."

The 1993 Doctoral Research Award was presented to Charles T. Krueger for his 1991 study at the University of Minnesota, "Characteristics and Perceived Importance of Competencies of Plant Managers in Minnesota and Wisconsin." The 1992 Master's Research Award was presented to Sandra Jane Wiedegreen for her 1992 study at Virginia Polytechnic Institute and State University, "Professional Development: Determining Member Needs for the Virginia Business Education Association."

The 1992 DPE National Research Conference was held in Los Angeles, California, November 12-14. Kevin Mulcahy was the conference chairperson.

The National Executive Board approved the recommendation of the 1991 National Council that an award be established to recognize independent research

efforts in business education. The first award would be presented at the 1996 National Research Conference for research completed in 1994 and 1995.

### **Research Foundation**

In 1992 the directorships of the DPE Research Foundation, Inc., changed, with the president, vice president, secretary, and executive director of Delta Pi Epsilon serving as directors of the Foundation. In addition, two additional directors would be elected as directors at large.

The 1992-1993 members of the Foundation Board of Directors were Betty J. Brown, president; Sharon Lund O'Neil, vice president; Gayle A. Stelter, secretary-treasurer; Marian C. Crawford; B. June Schmidt; and Robert B. Mitchell, executive director.

The Foundation awarded six grants in the biennium, totaling \$20,521.

### **Chapter Activities and Awards**

In 1992 the Gamma Omega Chapter was installed at Southwest Missouri State University, Springfield, Missouri, September 11. In 1993 the Delta Beta Chapter was installed at Louisiana State University, Baton Rouge, Louisiana, September 25.

Chapters declared inactive in the biennium were Gamma Epsilon Chapter (East Texas State University), in 1992, and Alpha Beta (University of Illinois), in 1993.

Gamma Nu Chapter (University of Alabama) changed its name to State of Alabama Chapter in 1992.

Three Colorado Chapters—Eta (University of Denver), Alpha Alpha (University of Northern Colorado), and Alpha Iota (University of Colorado)—merged to become the Delta Alpha Chapter (The Colorado Chapter), in 1992.

Beta Theta Chapter (University of Wisconsin-Whitewater) received the Chapter Research Projects Award; Beta Chapter (University of Oklahoma) received the Chapter Newsletter Award; and Beta Omicron Chapter (Southern Illinois University Carbondale) received the Chapter Recognition Award.

The John Robert Gregg Award was presented to B. June Schmidt and JoAnna Hibler.

### **Distinguished Lecturers**

The 1992 Distinguished Lecture was presented by William A. Schreyer, chairman and chief executive officer of Merrill Lynch & Co., Inc., at the second general session of the NBEA Convention. His presentation, "The Responsibility of Leadership Is to See the World Whole," was printed in Volume 34, No. 2, (1992) of *The Delta Pi Epsilon Journal*.

The 1993 Distinguished Lecture was presented by T. Boone Pickens, chairman and chief executive officer of MESA Inc. His presentation, "Address to Business Educators," was printed in Volume 36, No. 1. (1994) of *The Delta Pi Epsilon Journal*.

## Membership

The 1992 membership consisted of active, 5,588; honorary, 161; life, 1,291; and emeritus, 277. In 1992, 337 members were initiated. At the end of 1992, 27,736 members had been initiated into Delta Pi Epsilon.

The 1993 membership consisted of active, 5,454; honorary, 153; life, 1,337; and emeritus, 277. In 1993, 364 members were initiated. At the end of 1993, 28,100 members had been initiated into the Society since it was founded in 1936.

## Publications

David P. Dauwalder was appointed editor of *The Delta Pi Epsilon Journal*. The editorial board consisted of Marguerite S. Joyce, assistant editor; Walter Brower; Mary Ellen Guffey; Vera J. Harper; Donna Kizzier; Marcella Kocar; Judith J. Lambrecht; Carol Mitzner; B. June Schmidt; James C. Scott; and Daniel Wunsch.

Pat R. Graves was appointed editor of the *Business Education Index*. F. Stanford Wayne continued to serve as editor of *Instructional Strategies: An Applied Research Series* with the following editorial board: Julie Bolchen, Anna M. Burford, Paula D. Cannon, JoAnn Gowan, David Lynch, Peter F. Meggison, Arnola C. Ownby, Heidi R. Perreault, Robert Schramm, James C. Scott, Ruby N. Vincent, and Kathy A. White.

During the biennium four newsletters and nine national office bulletins were published by the DPE national office.

## Policies Commission for Business and Economic Education

The Policies Commission for Business and Economic Education published four statements during the biennium: "This We Believe About Teaching Business Ethics," "This We Believe About the Role of Business Education in the Global Marketplace," "This We Believe About the Role of Business Education in Technology," and "This We Believe About the Role of Business Education in Tech Prep." The DPE appointees to the Commission were David J. Hyslop, Robert Poland, Ginger Rose, and F. Stanford Wayne. Betty J. Brown and Robert B. Mitchell were ex officio members.

## Joint Committee on Economic Education

Wanda Blockhus, Thomas Haynes, and Roger Luft represented DPE on the Joint Committee on Economic Education.

## Twenty-ninth National Council

The twenty-ninth DPE National Council meeting was held in Kansas City, Missouri, November 18-20, 1993. The Council voted to change the national governing documents:

1. A member-at-large classification would be established for those members whose chapters have been officially declared inactive.

2. Life and emeritus members would be assessed a minimal fee if they wished to receive national publications, other than the *DPE Newsletter*.
3. The positions of national historian and national past president would be eliminated with their duties being assigned to other national officers and/or committees.
4. Petition and charter fees were removed as requirements in the new chapter petitioning process.
5. A national award for Independent Research was approved (first awarded in 2000).

\* \* \*

*A Recommitment to Our Future—throughout this biennium I and other members of the Board have encouraged you to consider ways in which you can recommit yourselves to your future—our future. Continue that renewed commitment. . . . That commitment includes a commitment to research, to scholarship, to leadership, and to cooperation.* (The State of the Society address, National President Betty J. Brown, *Delta Pi Epsilon Bulletin*, December, 1993, p. 7)

## **The 1994-1995 Biennium**

### **Sharon Lund O'Neil Encourages New Paradigms of Excellence**

*Our collective accomplishments are impressive. We can be proud—and should be proud—of the significant progress we have made to further the goals of our profession. While Delta Pi Epsilon is important to each of us for different reasons, our synergy can be maximized further if our individual and collective efforts continue to be focused on our unity of purpose. We must put emphasis on Defining our Paradigms of Excellence for our Society to provide the leadership, scholarship, and cooperation that are so essential to the growth and prosperity of our profession—and, the future of business education depends on us to do so.* (Inaugural Address by National President Sharon Lund O'Neil, *Delta Pi Epsilon Bulletin*, January, 1994, p. 3)

### **National Executive Board**

The 1993 National Council elected the following national officers for the biennium: Sharon Lund O'Neil, president; B. June Schmidt, vice president; F. Stanford Wayne, secretary; Peter F. Meggison, treasurer; Terry D. Roach, historian; and Betty J. Brown, past president. Robert B. Mitchell was reappointed executive director.



In 1994 the executive board met in Little Rock, Arkansas; Kansas City, Missouri; Houston, Texas; and Philadelphia, Pennsylvania; in 1995, Little Rock, Arkansas; San Francisco, California; Chicago, Illinois; and Cincinnati, Ohio.

The theme of the 1994-1995 biennium was “**Defining our Paradigms of Excellence.**”

### **Research Activities**

The 1994 Doctoral Research Award was presented to Susan E. Maxam for her 1992 study at Utah State University, “The Effects of Phases of Keyboarding Speed on Student Grades in Beginning Computer Classes.” The 1994 Master’s Research Award was presented to Mary Morris Litshein for her 1993 study at the University of Minnesota, “Reflecting Disability Perspectives in the University of Minnesota (Twin Cities).”

The 1995 Doctoral Research Award was presented to John N. McKenna for his 1993 study at New York University, “Ethical Dilemmas in Financial Reporting Situations and the Preferred Modes of Resolution of Ethical Conflicts as Taken by Certified and Noncertified Management Accountants in Organizations with Perceived Different Ethical Work Climates.” The 1995 Master’s Research Award was presented to Christine L. Johnson for her 1994 thesis at the University of Minnesota, “The Development of an Instrument to Measure Behavioral Norms Within an Organizational Culture.”

The 1994 DPE National Research Conference was held in Philadelphia, Pennsylvania, November 10-12. The conference chairperson was Marcia Anderson-Yates.

### **Research Foundation**

The 1994-1995 members of the DPE Research Foundation, Inc., Board of Directors were Sharon Lund O’Neil, president; B. June Schmidt, vice president; Ellis Jones, secretary-treasurer; David L. Fosnough; and F. Stanford Wayne. Robert B. Mitchell continued to serve as executive director.

### **Chapter Activities and Awards**

Four new chapters were installed in 1994: Delta Gamma Chapter (Mississippi State University); Delta Delta Chapter, which merged Xi Chapter (University of Florida) and Gamma Rho Chapter (University of South Florida) into the State of Florida Chapter; Delta Epsilon Chapter (State of West Virginia Chapter); and Delta Zeta (Northeast Ohio Chapter).

In 1995 Delta Eta was installed as the State of Wyoming Chapter and Delta Theta Chapter at Southern New Hampshire University. The first chapter outside the continental United States was installed in Puerto Rico as the Delta Iota Chapter.

Chapters declared inactive in 1995 were Iota Chapter (Syracuse University) and Sigma Chapter (University of Oklahoma).

The John Robert Gregg Award was presented to Patricia J. Moody and Mary Margaret Hosler.

### **Distinguished Lecturers**

The 1994 Distinguished Lecture was presented by Homi Patel, president and chief executive officer of Hartmarx Corporation at the second general session of the NBEA Convention. His presentation, "The Changing Role of Business Education in the Global Marketplace," was printed in the Volume 36, No. 3 (1994), issue of *The Delta Pi Epsilon Journal*.

The 1993 Distinguished Lecture was presented by Richard M. DeVos, co-founder and former president of Amway Corporation. His speech, "Compassionate Capitalism," was printed in Volume 37, No. 4 (1995), issue of *The Delta Pi Epsilon Journal*.

### **Membership**

The 1994 DPE membership consisted of active, 5,191; honorary, 152; life, 1,312; and emeritus, 298. In 1994, 339 members were initiated. At the end of 1994, 28,439 members had been initiated into Delta Pi Epsilon.

The 1995 membership consisted of active, 4,935; honorary, 142; life, 1,335; and emeritus, 335. In 1995, 349 members were initiated. At the end of 1995, 28,788 members had been initiated into the Society since it was founded in 1936.

### **Publications**

Marguerite P. Shane Joyce was appointed editor of *The Delta Pi Epsilon Journal*, with the following editorial board: Carol Blaszczynski, Lillian Chaney, Debbie DuFrene, Marie Flatley, Mary Ellen Guffey, Vera J. Harper, Judith J. Lambrecht, Kevin Mulcahy, Arnola C. Ownby, Paula Schwalm, and Daniel Wunsch.

Cheryl L. Noll was appointed editor of the *Business Education Index*, while Pat R. Graves served as associate editor. Zane Quible was appointed editor of *Instructional Strategies: An Applied Research Series*, with the following editorial board: Julie A. Bolchen, Anna M. Burford, Mona Casady, Elizabeth Goodrich, David J. Hyslop, Ken Kaser, Donna Kizzier, Susan Maxam, Dorothy Neal, Heidi R. Perreault, Robert Schramm, James C. Scott, Emma Jo Spiegelberg, and Kathy A. White.

B. June Schmidt served as editor, with Jerry Kandies and Robert C. Magee as associate editors, of *Review and Synthesis of Research in Business Education 1980-1990*. Betty J. Brown served as editor of *Needed Research in Business Education*, 5<sup>th</sup> edition.

Other publications included *A Paradigm for Affective Education in Business via Business and Industry* by Patricia Kay Fordham, 1994; *Teaching Keyboarding*, 3<sup>rd</sup> edition, 1995, by Gary N. McLean; *Teaching Computer Applications* by Carol Lundgren, Terry Lundgren, and George Mundrake, 1995; and *Selected Abstracts of Funded Grants Delta Pi Epsilon Research Foundation, Inc., 1981-1993*, 1994.

During the biennium four newsletters and seven national office bulletins were published by the DPE national office.

## **Policies Commission for Business and Economic Education**

The Policies Commission for Business and Economic Education published three statements during the biennium: “This We Believe About the Role of Business Programs in Community Colleges,” “This We Believe About the Role of Business Education in Developing Higher-Order Thinking Skills,” and “This We Believe About the Evolving Vision of Education For and About Business.” The DPE appointees to the Commission were David J. Hyslop, Judith J. Lambrecht, Barbara Trent, and F. Stanford Wayne. Sharon Lund O’Neil and Robert B. Mitchell were ex officio members.

## **Joint Committee on Economic Education**

Thomas Haynes, Roger Luft, and John Manzer represented DPE on the Joint Committee on Economic Education.

## **Thirtieth National Council**

The thirtieth DPE National Council meeting was held in Cincinnati, Ohio, November 16-18, 1995. The first Theodore Woodward Chapter Leadership Award, designed to recognize outstanding service at the chapter level, was presented to 32-year DPE member David L. Kane, sponsor of Beta Epsilon Chapter, San Jose State University.

\* \* \*

*Business education can be a value-added discipline if we do not become satisfied with merely “keeping up” with change and technology. That is, we must aspire to achieve a leadership role in fostering change—a role which must be earned every single day. Change should be our norm, even though it may severely hamper our “comfort zone,” and we must continue Defining our Paradigms of Excellence. (Message from National President Sharon Lund O’Neil, Delta Pi Epsilon Newsletter, Summer, 1994, p. 2)*

## **The 1996-1997 Biennium**

### **B. June Schmidt Emphasizes Professionalism**

*Since founded in 1936, Delta Pi Epsilon has existed to serve its members and, in turn, to strengthen business education. We join together in the search of knowledge and to assure that our knowledge base continues to grow through quality research. We work together to assure that the knowledge is accurately recorded and broadly shared. Further, we reward quality research. These research activities coupled with the service activities of our organization provide what we need in Developing a Professional Edge, the theme . . . for the upcoming biennium. DPE serves as a force that holds us together and allows us to grow as professionals, thus giving*

*us a professional edge.* (Inaugural Address by National President B. June Schmidt, *Delta Pi Epsilon Newsletter*, Winter, 1996, p. 1)

### **National Executive Board**

The 1995 National Council elected the following national officers for the biennium: B. June Schmidt, president; Peter F. Meggison, vice president; F. Stanford Wayne, secretary; and Terry D. Roach, treasurer. Robert B. Mitchell was reappointed executive director.

In 1996 the executive board met in Little Rock, Arkansas; New Orleans, Louisiana; Mountain Lake, Virginia; and Indianapolis, Indiana; in 1997, Washington, D.C.; New York, New York; and Chicago, Illinois.

The theme of the 1996-1997 biennium was "Developing a Professional Edge."

### **Research Activities**

The 1996 Doctoral Research Award was presented to Gail A. Hoover for her 1994 study at Northern Illinois University, "The Importance of Selected Finance Topics Needed in Preparation for an Entry-Level Position in Financial Management as Perceived by Finance Practitioners and Educators." The 1996 Master's Research Award was presented to Patricia A. Diggle for her 1995 study at Southern Illinois University Carbondale, "Temporary Administrative Support Staff: Employer Perceptions and Patterns of Employment."

The 1997 Doctoral Research Award was presented to Stacy L. Ball for her 1995 study at Northern Illinois University, "Workplace Diversity: Perspectives from Human Resource Management and Human Resource Development." The 1997 Master's Research Award was presented to Joan R. LeVier for her 1996 study at Central Michigan University, "Sexual Harassment Awareness Throughout the United States."

The 1996 DPE National Research Conference was held in Indianapolis, Indiana, November 14-16. The conference theme was "Get Connected"; the conference chairperson was Leona Gallion.

### **Research Foundation**

The 1996-1997 members of the DPE Research Foundation, Inc., Board of Directors were B. June Schmidt, president; Peter F. Meggison, vice president; Ellis Jones, secretary-treasurer; David L. Fosnough; and F. Stanford Wayne. Robert B. Mitchell again served as executive director.

The Foundation awarded five grants in the biennium, totaling \$15,220.

### **Chapter Activities and Awards**

Alpha Eta Chapter (University of Wisconsin), Alpha Kappa Chapter (San Francisco State University), and Beta Xi Chapter (Memphis State University) were declared inactive in 1996. Gamma Lambda Chapter (Western Kentucky University) was declared inactive in 1997.

The John Robert Gregg Award was presented to Sharon Lund O'Neil and Charles J. Inacker.

### **Distinguished Lecturers**

The 1996 Distinguished Lecture was presented by James R. Moffett, chairman and chief executive officer, Freeport-McMoRan Cooper & Gold, Inc., at the second general session of the NBEA Convention in New Orleans. His presentation, "1996: Building Partnerships Between the World of Work and Academia," was printed in Volume 38, No. 2, (1996) of *The Delta Pi Epsilon Journal*.

The Distinguished Lecture Series was discontinued in 1997.

### **Membership**

The 1996 DPE active membership was 4,324. In 1996, 261 members were initiated. At the end of 1996, 29,049 members had been initiated into Delta Pi Epsilon.

The 1997 active membership was 4,081. In 1997, 216 members were initiated. At the end of 1997, 29,265 members had been initiated into the Society since it was founded in 1936.

### **Publications**

Marguerite P. Shane Joyce served as editor of *The Delta Pi Epsilon Journal*, with the following editorial board: Donna Holmquist, associate editor; Carol Blaszczyński; Lillian Chaney; Neil Dortch; Debbie DuFrene; Marie Flatley; Mary Ellen Guffey; Vera J. Harper; Randy L. Joyner; Judith J. Lambrecht; Kevin Mulcahy; Arnola C. Ownby; and Daniel Wunsch.

Cheryl L. Noll served as editor of the *Business Education Index*; Pat R. Graves served as associate editor. Zane Quible served as editor of *Instructional Strategies: An Applied Research Series*, with the following editorial board: Julie A. Bolchen, Anna M. Burford, Mona Casady, Elizabeth Goodrich, David J. Hyslop, Ken Kaser, Donna Kizzier, Susan Maxam, Dorothy Neal, Heidi R. Perreault, Robert Schramm, James C. Scott, Emma Jo Spiegelberg, and Kathy A. White.

New publications included *Facilitating International Business Communication: A Global Perspective* by James C. Scott, 1996; *Teaching Electronic Communication: Technology for the Digital Age* by Marie E. Flatley, 1996; and *Index to Doctoral Dissertations in Business Education and Related Topical Areas Supplement, 1991-1995*, by Patricia A. Diggie, Marcia A. Anderson, and Janice Schoen Henry, 1997.

*Research Conference Proceedings* was published in 1996.

During the biennium six newsletters and seven national office bulletins were published by the DPE national office.

### **Policies Commission for Business and Economic Education**

The Policies Commission for Business and Economic Education published four statements in the biennium: "This We Believe About the Emerging Role

of Business Education in Human Resource Development,” “This We Believe About Assessing Student Achievement in Business Education,” This We Believe About the Professional Development of Business Educators,” and “This We Believe About the Delivery of Business Education.” The DPE appointees to the Commission were Clora Mae Baker, Judith J. Lambrecht, Terry D. Roach, and Barbara Trent. B. June Schmidt and Robert B. Mitchell were ex officio members.

### **Joint Committee on Economic Education**

Thomas Haynes, Roger Luft, and John Manzer represented DPE on the Joint Committee on Economic Education.

### **Thirty-first National Council**

The thirty-first DPE National Council meeting was held in Chicago, Illinois, November 13-15, 1997. The second Theodore Woodward Chapter Leadership Award, designed to recognize outstanding service at the chapter level, was presented to Alpha Chapter, New York University, member Yves Etienne, a faculty member at Kingsboro Community College, Brooklyn, New York.

The 1997 Council voted to change the national governing documents so that the National Research Conference would be held annually with the National Council meeting for not more than one day as a pre-session to the research conference in odd-numbered years.

\* \* \*

*Meeting with DPE members, I have continually stressed that our Society can succeed only to the extent that it serves its members. Our primary focus is on establishing the research base that is essential for business education to be recognized as a profession.*

*Through our combined efforts, we support, conduct, disseminate, and recognize research. Further, our members are committed to strengthening DPE through service activities. (The State of the Society address, National President B. June Schmidt, Delta Pi Epsilon Bulletin, January, 1998, p. 1)*

## **The 1998-1999 Biennium**

### **Peter F. Meggison Focuses on the Challenge of Change**

*Our Delta Pi Epsilon chapters were founded in a rich tradition and heritage which impel us to respond to the changing needs of business education. It is the DPE tradition which calls us to recognize and address these needs; however, as Charles Eliot, president of Harvard University, said 100 years ago, “A good past is positively dangerous if it makes us content with the present and so unprepared for the future.” It is this tradition which calls*

*upon each of us today to be refounders. We are educators who can offer a proactive vision for education for and about business; who are able to devise and implement creative and imaginative ways to help prepare our students for the new millennium.* (Inaugural Address by National President Peter F. Meggison, *Delta Pi Epsilon Bulletin*, Spring, 1998, p. 3)

### **National Executive Board**

The 1997 National Council elected the following national officers for the 1998-1999 biennium: Peter F. Meggison, president; Marcia A. Anderson, vice president; Cathy Tkacik, secretary; and Harry Nowka, treasurer. Robert B. Mitchell was reappointed executive director.

In 1998 the executive board met in Little Rock, Arkansas; San Antonio, Texas; Boston, Massachusetts; and Louisville, Kentucky; in 1999, Tampa, Florida; Chicago, Illinois; Little Rock, Arkansas; and St. Louis, Missouri.

The theme of the 1998-1999 biennium was "Delta Pi Epsilon Meets the Challenge of Change."

### **Research Activities**

The 1998 Doctoral Research Award was presented to Ratna Sinha for her 1996 study at Southern Illinois University Carbondale, "Teaching as a Career: Patterns and Perceptions of Business Education Teachers."

The 1999 Doctoral Research Award was presented to Jill D. Aquilla for her 1997 study at New York University, "Internal Control Environment Factors and Financial Reporting Decisions Made by Financial Accountants."

The 1998 DPE National Research Conference was held in Louisville, Kentucky, November 19-21. The theme of the 1998 conference was "Racing Toward Quality Research and Teaching," with Lillian Greathouse as the conference chairperson. The 1999 DPE National Research Conference (now an annual event) was held in St. Louis, Missouri, November 18-20. The theme of the 1999 conference was "Gateway to Improving Research and Teaching," with Lillian Greathouse again serving as conference chairperson.

### **Research Foundation**

The 1996-1997 members of the DPE Research Foundation, Inc., Board of Directors were Peter F. Meggison, president; Marcia A. Anderson, vice president; Lillian Greathouse, secretary-treasurer; James C. Scott; and Cathy Tkacik. Robert B. Mitchell again served as executive director.

The Foundation awarded five grants in the biennium, totaling \$17,618.

### **Chapter Activities and Awards**

Three Pennsylvania chapters, Gamma (University of Pittsburgh), Beta Alpha (Indiana University of Pennsylvania), and Gamma Upsilon (Robert Morris College) merged into the Western Pennsylvania Chapter, retaining the Gamma designation, in 1998.



Three California Chapters, Psi (University of Southern California), Alpha Omicron (University of California at Los Angeles), and Beta Pi (California State University, Los Angeles) merged to form the Delta Kappa Chapter (Southern California Chapter) in 1999.

Two California Chapters, Alpha Kappa (San Francisco State University) and Beta Epsilon (San Jose State University) merged, retaining the Beta Epsilon designation, in 1999.

Kappa Chapter (University of Michigan), Lambda Chapter (Northwestern University), Alpha Lambda Chapter (Michigan State University), Alpha Pi Chapter (Wayne State University), Beta Rho Chapter (Western Michigan University), and Beta Sigma Chapter (University of Wisconsin—Eau Claire) were declared inactive in 1999.

Alpha Upsilon Chapter (University of Nebraska) received the Chapter Service Projects Award; Delta Zeta Chapter (Northeast Ohio Chapter) received the Chapter Research Projects Award; Beta Theta Chapter (University of Wisconsin—Whitewater) and Beta Omicron Chapter (Southern Illinois University Carbondale) received the Chapter Newsletter Award; and Beta Omicron Chapter (Southern Illinois University Carbondale) received the Chapter Recognition Award.

Sharon Andelora (Beta Phi Chapter) received the Theodore Woodward Chapter Leadership Award.

The John Robert Gregg Award was presented to Sue C. Rigby and Betty C. Fry.

## Membership

The 1998 active membership was 3,642. In 1998, 243 members were initiated. At the end of 1998, 29,508 members had been initiated into Delta Pi Epsilon.

The 1999 active membership was 3,341; life, 1,758. In 1999, 275 members were initiated. At the end of 1999, 29,783 members had been initiated into the Society since it was founded in 1936.

## Publications

James C. Scott was appointed editor of *The Delta Pi Epsilon Journal*. The editorial board consisted of Carol Blaszczyński, associate editor; Diana J. Green; Sherri Lee Arosteguy; Sharon Andelora; Becky Briggs; Paula E. Brown; Lillian Chaney; Les Dlabay; Lonnie Echternacht; Marie Flatley; Mary Ellen Guffey; Carolee Sormunen Jones; Burton S. Kaliski; Betty Kleen; Judith J. Lambrecht; Carol A. Lundgren; Susan Maxam; Beryl C. McEwen; and Karen Sterkel Powell.

Cheryl L. Noll served as editor of the *Business Education Index*; Pat R. Graves was associate editor.

Zane Quible served as editor of *Instructional Strategies: An Applied Research Series*. The editorial board consisted of Anna M. Burford, Mona Casady, David J. Hyslop, Kenneth J. Kaser, Donna McAlister Kizzier, Susan Maxam, Dorothy Neal, Heidi R. Perreault, Robert Schramm, James C. Scott, Emma Jo Spiegelberg, Kathy A. White, and Julie A. Woletz.

New publications included *Review and Synthesis of Research in Business Education: 1991-1999*, Robert Magee Bacchus, editor, and Jerry T. Kandies, assistant editor, 1998; *Authentic Assessment in Action: Preparing for the Business Workplace*, by Nancy Zeliff and Kimberly Schultz, 1999; *Professional Presentations Using Technology*, by Pat R. Graves and Joyce Kupsh, 1999; *Computer Hardware: Standalone and Networked Systems*, by Ruthann Dirks, 1999; *Case Studies for Effective Business Instruction*, edited by Donna McAlister-Kizzier, 1999; and *Research Conference Proceedings*, 1998 and 1999.

During the biennium five newsletters and seven national office bulletins were published by the DPE national office.

### **Policies Commission for Business and Economic Education**

The Policies Commission for Business and Economic Education published four statements during the biennium: "This We Believe About the Role of Standards for Business Education," "This We Believe About the Relationship Between Business Education and Students' Transition to Work," "This We Believe About the Role of Business Education at All Educational Levels," and "This We Believe About Distance Learning in Business Education." The DPE appointees to the Commission were Clara Mae Baker, Eric A. Larson, Terry Roach, and B. June Schmidt. Peter F. Meggison and Robert B. Mitchell were ex officio members.

### **Joint Committee on Economic Education**

Burton S. Kaliski, Roger Luft, and John Manzer represented DPE on the Joint Committee on Economic Education.

### **Thirty-second National Council**

The thirty-second DPE National Council meeting was held in St. Louis, Missouri, on November 18, 1999. The third Theodore Woodward Chapter Leadership Award, designed to recognize outstanding service at the chapter level, was presented to Sharon Andelora, Beta Phi Chapter (Montclair State University), a teacher at Woodcliff School, Woodcliff Lake, New Jersey.

Among other things, the 1999 Council voted to change the national governing documents so that no new life memberships would be granted.

\* \* \*

*Delta Pi Epsilon faces many challenges . . . as we face the new millennium. Let us make wise and courageous decisions so that we can prepare for the future. We are now in transition, a turning point in the history of our Society. Let us not, therefore, be reticent or unimaginative; but, instead, let us empower ourselves, through decisive action, with vision and conviction as we recommit ourselves to our solid Delta Pi Epsilon goals of scholarship, leadership, and cooperation. (The State of the Society address, National President Peter F. Meggison, Delta Pi Epsilon Bulletin, December, 1999, p. 3)*

## **The 2000-2001 Biennium**

### **Marcia A. Anderson Promotes Professionalism**

*We are definitely leaving this century with the type of pattern I would think we would want to continue in the new century—willingness to address the changing needs of the society and its members. But the change in the way we conduct business does not mean that we have varied from the courageous and challenging vision that has constituted Delta Pi Epsilon for these 63 years—this vision as represented through the Delta Pi Epsilon ideals of scholarship, leadership, and cooperation. I am asking you today to accept continuing as well as new commitments and roles needed for our profession in the new century. These commitments and roles are those expected of leaders in a profession—in a profession of business education whose leaders are the Distinguished Professional Educators. (Inaugural Address of National President Marcia A. Anderson, Delta Pi Epsilon Newsletter, Winter, 2000, p. 1)*

### **National Executive Board**

The 1999 National Council elected the following national officers for the 2000-2001 biennium: Marcia A. Anderson, president; Larry G. Pagel, vice president; Margaret Erthal, secretary; and Cathy Tkacik, treasurer. Robert B. Mitchell served as executive director.

The National Executive Board met in 2000 in Little Rock, Arkansas; Anaheim, California; Colorado Springs, Colorado; and Columbus, Ohio. In 2001, in Las Vegas, Nevada; Atlanta, Georgia; Chicago, Illinois; and Nashville, Tennessee.

The theme for the 2000-2001 biennium was “Distinguished Professional Educators.”

### **Research Activities**

The 2000 DPE Doctoral Research Award was presented to Karl M. Soehnlein for his 1998 study at New York University, “The Relationship of Job Insecurity, Career Planning, Self-Efficacy, Goal Orientation and the Self Development of Survivors of a Downsizing Corporation.”

In 2000 the first Independent Research Award, recognizing the best research that advances any area of business education published in any review board or editor-refereed journal, was presented to William J. Wilhelm. His 1999 article, “A Delphi Study of Entry-Level Workplace Skills, Competencies, and Proof-of-Achievement Products,” was published in Volume 41, No. 2 (1999), of *The Delta Pi Epsilon Journal*.

The 2001 DPE Doctoral Research Award was presented to James E. Bartlett, II, for his 1999 study at Louisiana State University, “Analysis of Self-Directed Learning in Secondary Business Educators.” The 2001 DPE Independent Research Award was presented to Judith J. Lambrecht for her article, “Developing End-

User Technology Skills,” published in Volume 18, No. 1 (2000) of the *Information Technology, Learning, and Performance Journal*.

The 2000 DPE National Conference was held in Columbus, Ohio, November 16-18—the theme was “Focus on Innovation”; Barbara Trent was the conference chairperson. The 2001 conference was held in Nashville, Tennessee, November 15-17—the theme was “Research that Informs Educational Practice . . . Instructional Practice that Stimulates Research”; Thomas Haynes was the conference chairperson.

### **Research Foundation**

The 2000-2001 members of the DPE Research Foundation, Inc., Board of Directors were Marcia A. Anderson, president; Larry G. Pagel, vice-president; Lillian Greathouse, secretary-treasurer; Margaret Erthal; James Calvert Scott; and Robert B. Mitchell, executive director.

### **Chapter Activities and Awards**

Chapters declared inactive during 2000 were Beta Omega (Louisiana Tech University) and Gamma Beta (Trenton State College).

Chapters declared inactive during 2001 were Alpha Gamma (University of Houston), Beta Upsilon (Pittsburg State University), Gamma Omicron (Oregon State University), and Delta Alpha (The Colorado Chapter).

Delta Alpha Chapter (The Colorado Chapter) received the Chapter Newsletter Award; Beta Theta Chapter (University of Wisconsin—Whitewater) received the Chapter Recognition Award.

Gayle McGregor (Gamma Eta Chapter) received the Theodore Woodward Chapter Leadership Award.

The John Robert Gregg Award was presented to Betty J. Brown and Lonnie Echternacht.

### **Membership**

The 2000 DPE membership consisted of active, 2,754; life, 1,596. In 2000, 162 new members were initiated. At the end of 2000, a total of 29,945 members had been initiated into Delta Pi Epsilon.

The 2001 DPE membership consisted of active, 2,349; life, 1,621; honorary, 124. In 2001, 134 members were initiated. At the end of 2001, a total of 30,079 members had been initiated into the Society since it was founded in 1936.

Coordinated by Sandra Ubelacker and the Membership Committee, the first initiation of new DPE members in Canada occurred—the first initiation outside the United States.

### **Publications**

Carol Blaszczyński was appointed editor of *The Delta Pi Epsilon Journal*. The editorial board consisted of James Calvert Scott, consulting editor; Sherri  
*The Delta Pi Epsilon Journal*

Lee Arosteguy, associate editor; Diana J. Green, associate editor; Susan Maxam, associate editor; Allen D. Truell, associate editor; Daniel Frise, assistant editor; Lillian Chaney; Les R. Dlabay; Marie Flatley; Mary Ellen Guffey; Burton S. Kaliski; Judith J. Lambrecht; Beryl C. McEwen; Bridget O'Connor; Karen Sterkel Powell; Kelly Wilkinson; Janet Winter; and Jensen J. Zhao.

Wanda L. Stitt-Gohdes was appointed editor of *Instructional Strategies: An Applied Research Series*. The editorial board consisted of Anna M. Burford, Mona Casady, David J. Hyslop, Kenneth J. Kaser, Donna McAlister-Kizzier, Susan Maxam, Heidi R. Perreault, Robert Schramm, James Calvert Scott, Emma Jo Spiegelberg, and Kathy A. White.

Cheryl L. Noll and Pat R. Graves continued as co-editors of the *Business Education Index* for the year 2000. The Business Education Index was discontinued after the 2000 issue.

New publications included *Organizational Socialization and Adaptation: Learning the Ropes in the Workplace by Primary Computer Users* (Research Foundation final report), by Judith J. Lambrecht, Donna H. Redmann, and Wanda Stitt-Gohdes, 2000; *Best Practices in Business Education*, coordinated by Dianna Briggs, 2001; *Needed Research in Business Education*, 6<sup>th</sup> edition, by Martha H. Rader and William J. Wilhelm, 2001; and *National Conference Book of Readings*, 2000 and 2001. (In 2000 the National Conference proceedings publication was redesigned into a Book of Readings.)

During the biennium six newsletters and six national office bulletins were published by the DPE national office.

### **Policies Commission for Business and Economic Education**

The Policies Commission for Business and Economic Education published four policy statements during the biennium: "This We Believe About Electronic Business in Business Education," "This We Believe About Teaching Soft Skills: Human Relations, Self-Management, and Workplace Enhancement," "This We Believe About the Emerging Roles of the Business Educator," and "This We Believe About the Role of Business Education in Financial Education." The DPE appointees to the Commission were Lillian Greathouse; Burton Kaliski; Eric Larson; and B. June Schmidt. Marcia Anderson and Robert B. Mitchell were ex officio members.

### **Joint Committee on Economic Education**

Betty Brown, Roger Luft, and James Tarr represented DPE on the Joint Committee on Economic Education.

### **Thirty-third National Council**

The final DPE National Council meeting was held November 15, 2001, in Nashville, Tennessee. Actions of the Council included the following: discontinue the *Business Education Index*, offer annually the DPE National Conference,

eliminate the National Council, and conduct election of national officers by the full membership of the Society.

\* \* \*

### *Leaders in Delta Pi Epsilon: Roles and Responsibilities*

*Those Distinguished Professional Educators in Business Education are current Delta Pi Epsilon members—the elite of the education for business profession. . . . What does it mean to accept this role of professionalism for the elite of our profession? Professionalism is defined as the “extent to which one is committed to one’s profession.” There are five general attitudes that are indicative of professionalism: (a) use of the profession and fellow professionals as a major referent as exemplified in professional group membership, (b) a belief that the profession provides an important service to society, (c) a belief in regulation of the profession by its members, (d) a belief that practitioners of the profession feel a lifelong sense of calling, and (e) a belief that individuals should have the right to make decisions in their work without the approval of others. . . . most of us would agree those five attitudes of professionalism generally represent our belief and behaviors. (President Marcia A. Anderson, *Delta Pi Epsilon Bulletin*, March, 2000, p. 1)*

## **The 2002-2003 Biennium**

### **Larry G. Pagel Leads During a Time of Change**

*John F. Kennedy said, “Change is the law of life. And those who look only to the past or the present are certain to miss the future.” (Inaugural address of National President Larry Pagel, *Delta Pi Epsilon Newsletter*, p. 1)*

### **National Executive Board**

The 2001 National Council elected the following national officers for the 2002-2003 biennium: Larry Pagel, president; Judith J. Lambrecht, vice president; Patricia I. Wilson, secretary; and Nancy Ostrowski, treasurer. Robert B. Mitchell served as executive director.

The National Executive Board met in 2002 in Little Rock, Arkansas; Philadelphia, Pennsylvania; Marquette, Michigan; and Cleveland, Ohio. In 2003, in Atlanta, Georgia; Dallas, Texas; McGregor, Minnesota; and Indianapolis, Indiana.

The theme for the 2002-2003 biennium was “Delta Pi Epsilon Embraces Change.”

## Research Activities

The 2002 DPE Doctoral Research Award was presented to Sandra J. Braathen for her 2000 study at the University of Minnesota, “A Comparison of Business Communication Students’ Writing Achievement when Constructivist or Behaviorist Methods of Instruction Are Used.” John Robert Duncan was presented the 2002 DPE Master’s Research Award for his study at Southern Illinois University Carbondale, “Factors Affecting the Use of Computers by Students in the Classroom.” The 2002 DPE Independent Research Award was presented to Jacqueline A. Burke for her article “Collaborative Accounting Problem Solving Via Group Support Systems in a Face-to-Face Versus Distant Learning Environment,” published in Volume 19, No. 2, of the *Information Technology, Learning, and Performance Journal*.

The 2003 DPE Doctoral Research Award was presented to Anthony Basile for his 2001 study at New York University, “Achievement of Accounting Students Relative to Individual Learning Styles and Locus of Control: An Experiment Involving Internet-based Instructional Technology.” The 2003 DPE Independent Research Award was presented to Catherine S. Chen, for her article “Self-Regulated Learning Strategies and Achievement in an Introduction to Information Systems Course,” published in Volume 20, No. 1, of the *Information Technology, Learning, and Performance Journal*.

The 2002 DPE National Conference was held in Cleveland, Ohio, November 21-23; Shirley Barton was the conference chairperson. The 2003 conference was held in Indianapolis, Indiana, November 20-22; Allen Truell was conference chairperson.

## Research Foundation

Members of the DPE Research Foundation, Inc., Board of Directors were Larry G. Pagel, president; Judith J. Lambrecht, vice-president; James Calvert Scott, secretary-treasurer; Carol Blaszczyński; Patricia Wilson; and Robert B. Mitchell, executive director.

The Foundation awarded five grants during the biennium, totaling \$5,500.

The first doctoral research grant was awarded to Peter W. Cardon in 2002.

## Chapter Activities and Awards

Gamma Psi Chapter (East Carolina University) received the Chapter Service Projects Award; Delta Iota Chapter (Puerto Rico Chapter) received the Chapter Research Projects Award; Alpha Upsilon Chapter (University of Nebraska) received the Chapter Newsletter Award; and Beta Theta Chapter (University of Wisconsin, Whitewater) received the Chapter Recognition Award.

Nancy Ostrowski (Beta Phi Chapter) received the Theodore Woodward Chapter Leadership Award.

The John Robert Gregg Award was presented to Bridget O’Connor and Michael Bronner and to Robert B. Mitchell.



## Membership

The 2002 DPE membership consisted of 2,246 active members. In 2002, 207 new members were initiated. At the end of 2002 a total of 30,286 members had been initiated into Delta Pi Epsilon.

The 2003 DPE membership consisted of active, 2,031; life, 1,094; honorary, 66. In 2003, 182 members were initiated. At the end of 2003, a total of 30,468 members had been initiated into the Society since it was founded in 1936.

## Publications

Roger Luft was appointed editor of *The Delta Pi Epsilon Journal*. The editorial board consisted of Sherri Lee Arosteguy, associate editor; Cheryl L. Noll, associate editor; Carol Blaszczyński, consulting editor; Shirley Barton; Betty J. Brown; Phyllis Bunn; Catherine Chen; Les R. Dlabay; Marie Flatley; Diana J. Green; Melinda McCannon; Beryl C. McEwen; Sharon Lund O'Neil; Ok D. Park; Martha Rader; Robert Schramm; Wanda L. Stitt-Gohdes; Allen D. Truell; Sandra Ubelacker; Kelly Wilkinson; Janet Winter; Dawn E. Woodland; and Jensen J. Zhao.

Wanda L. Stitt-Gohdes continued as editor of *Instructional Strategies: An Applied Research Series*. The editorial board consisted of Anna M. Burford, Mona Casady, David J. Hyslop, Kenneth J. Kaser, Donna McAlister-Kizzier, Susan Maxam, Heidi R. Perreault, Robert Schramm, James Calvert Scott, Emma Jo Spiegelberg, and Kathy A. White.

In 2003 *Instructional Strategies: An Applied Research Series* was renamed *Journal of Applied Research for Business Instruction*.

New publications included *Alternative Classroom Management and Instructional Delivery Systems in Business Education*, coordinated by Douglas C. Smith, 2002; *The Business Education Profession: Principles and Practices*, by Wanda L. Stitt-Gohdes, 2002; *Emerging Technologies*, by Susan Maxam, 2002; *Meeting the Demand: Teaching "Soft" Skills*, by William J. Wilhelm, Joyce Logan, Sheila M. Smith, and Linda F. Szul, 2002; and *National Conference Book of Readings*, 2002 and 2003.

*Business Education Internet Directory: Worth the Trip*, by Marilyn McAdams, Harriet Rogers, and Denise Roseland (service project of Beta Theta Chapter), was published in 2003.

During the biennium six newsletters and seven national office bulletins were published by the DPE national office.

## Policies Commission for Business and Economic Education

The Policies Commission for Business and Economic Education published four policy statements during the biennium: "This We Believe About the Need for Partnerships in Business Education," "This We Believe About the Need for Business Education," "This We Believe About the Need for Industry Certifications," and "This We Believe About the Need for Computer-Input Technologies." The



DPE appointees to the Commission were Marcia Anderson; Lillian Greathouse; Burton S. Kaliski; and Nancy Buddy Penner. Larry Pagel and Robert B. Mitchell were ex officio members.

### **Joint Committee on Economic Education**

Betty Brown, Roger Luft, James Tarr, and Gregory P. Valentine represented DPE on the Joint Committee on Economic Education.

\* \* \*

*A simple mission, communicated tirelessly, is an excellent leadership lesson for any individual or organization.* (Inaugural address of National President Larry Pagel, *Delta Pi Epsilon Newsletter*, Winter, 2002, p. 2)

## **The 2004-2005 Biennium**

### **Judith J. Lambrecht Encourages the Practice of Excellence**

*Like research, daring to practice excellence is a risk-taking enterprise. Taking risks is necessary because scholarship is the life-blood of any field of practice. Scholarship defines a field. Without compelling scholarship, in short, the field does not exist—or it will exist for some other group of people willing to create and present the key ideas. . . . Ideas are created by people, and you are that group who are defining Business Education.* (Inaugural Address of National President Judith J. Lambrecht, *Delta Pi Epsilon Newsletter*, Winter, 2004, p. 1)

### **National Executive Board**

In 2003 the Society membership elected the following national officers for the 2004-2005 biennium: Judith J. Lambrecht, president; Clora Mae Baker, vice president; Patricia I. Wilson, secretary; and Nancy Ostrowski, treasurer. Robert B. Mitchell served as executive director.

The National Executive Board met in 2004 in Indianapolis, Indiana; Cleveland, Ohio; Chicago, Illinois; Bloomington, Minnesota; and Washington, D.C. In 2005 the board met in Minneapolis, Minnesota; Anaheim, California; Chicago, Illinois; and Cincinnati, Ohio.

The theme for the 2004-2005 biennium was “Dare to Practice Excellence.”

### **Research Activities**

The 2004 DPE Doctoral Research Award was presented to Mary Ann DeLine for her 2002 study at Southern Illinois University Carbondale, “Computer Keyboarding Skill Retention.” The 2004 DPE Independent Research Award was presented to Jensen J. Zhao, Melody W. Alexander, Heidi Perreault, and Lila Waldman for their article, “Impact of Information Technologies on Faculty and

Students in Distance Education,” published in Volume 45, No. 1 (2003), of *The Delta Pi Epsilon Journal*.

The 2005 DPE Doctoral Research Award was presented to Margaret S. Kilcoyne for her 2003 study at Louisiana State University, “Identifying Skills Needed by Office Information Systems Graduates in the Changing Work Environment.” Allen D. Truell was presented the 2005 DPE Independent Research Award for his article, “Factors that Influence Foundations of Business Communication Students’ Performance on Computer-Based Tests,” published in Volume 31 (2004) of the *NABTE Review*.

The 2004 DPE National Conference was held in Washington, D. C., November 18-20—the theme of the conference was “Creating Quality Education Through Research and Teaching”; the conference chairperson was Peter F. Meggison. The 2005 conference was held in Cincinnati, Ohio, November 17-19—the theme of the conference was “Excellence in Business Education—Our Past, Our Present, Our Legacy!”; the conference chairperson was Randy Joyner.

### **Research Foundation**

The 2004-2005 members of the DPE Research Foundation, Inc., Board of Directors were Judith J. Lambrecht, president; Clora Mae Baker, vice-president; Carol Blaszczynski, secretary-treasurer; Pat R. Graves; Patricia Wilson; and Robert B. Mitchell, executive director.

The Foundation awarded two grants during the biennium, totaling \$7,100.

### **Chapter Activities and Awards**

Beta Gamma Chapter (Virginia Tech University) and Gamma Gamma Chapter (Virginia Commonwealth University) merged in 2004 to form Delta Lambda (The Virginia Chapter).

Beta Beta Chapter (Southern Illinois University at Edwardsville) was declared inactive in 2005.

Beta Theta Chapter (University of Wisconsin—Whitewater) received the Chapter Service Projects Award and the Chapter Research Projects Award in 2005; Alpha Chapter (New York University) received the Chapter Newsletter Award and the Chapter Recognition Award.

Sharon Esqueda (Beta Theta Chapter) received the Theodore Woodward Chapter Leadership Award.

The John Robert Gregg Award was presented to Marcia A. Anderson and Peter F. Meggison.

### **Membership**

The 2004 DPE membership consisted of active, 1,793; life, 1,578; honorary, 89. In 2004, 141 new members were initiated. At the end of 2004 a total of 30,609 members had been initiated into Delta Pi Epsilon.

The 2005 DPE membership consisted of active, 1,572; life, 1,464; honorary, 84. In 2005, 132 members were initiated. At the end of 2005 a total of 30,741 members had been initiated into the Society since it was founded in 1936.

In 2004 a DPE listserv, housed at Southern Illinois University Carbondale, was developed for communication among the membership.

## **Publications**

In 2004 Nancy Groneman was appointed editor of *The Delta Pi Epsilon Journal*. The editorial board consisted of Sherri Lee Arosteguy, associate editor; Heidi R. Perreault, associate editor; Carol Blaszczyński, consulting editor; Melody Alexander; Michael Bronner; Betty J. Brown; Phyllis Bunn; Catherine Chen; Tena B. Crews; Marcia L. James; Melinda McCannon; Sharon Lund O'Neil; Martha Rader; Douglas C. Smith; Wanda L. Stitt-Gohdes; Allen D. Truell; Kelly Wilkinson; Cheryl Wiedmaier; Janet Winter; and Jensen J. Zhao.

Wanda L. Stitt-Gohdes continued as editor of the *Journal of Applied Research for Business Instruction*. The editorial board consisted of Clara Mae Baker, Marcia Bush, Mona Casady, Tena Crews, David J. Hyslop, Kenneth J. Kaser, Donna McAlister-Kizzier, Susan Maxam, Heidi R. Perreault, Donna H. Redmann, James Calvert Scott, Kathy A. White, Barbara Wilson, and Dawn E. Woodland.

*National Conference Book of Readings* was published in 2004 and 2005.

During the biennium six newsletters and six national office bulletins were published by the DPE national office.

## **Policies Commission for Business and Economic Education**

The Policies Commission for Business and Economic Education published four statements during the biennium: "This We Believe About Business Education in a Global Environment," "This We Believe About Enabling and Enhancing Educational Experiences Through E-Learning," "This We Believe About Business Education as Core Academic Content," and "This We Believe About Work-Based Learning." DPE appointees to the Commission were Marcia Anderson, Larry Pagel, Nancy Buddy Penner, and Donna Redmann. Judith J. Lambrecht and Robert B. Mitchell, were ex officio members.

## **Joint Committee on Economic Education**

Betty Brown, James Eisenreich, Gregory P. Valentine, and William J. Wilhelm represented DPE on the Joint Committee on Economic Education.

\* \* \*

*Excellence of Delta Pi Epsilon means scholarship. While scholarship is one of our ideals, excellence does not announce itself. It needs to be envisioned. It needs to be constantly recreated. Programs and their products, the students themselves, need to be constantly evaluated to see if they match the model of*

*excellence. Those who can point to a solid research base and rationale to justify their programs are the ones who will have the programs through which they can then practice.* (Inaugural Address of National President Judith J. Lambrecht, *Delta Pi Epsilon Newsletter*, Winter, 2004, p. 2)

## **The 2006-2007 Biennium**

### **Clora Mae Baker Builds on the Strong Foundation**

*An old maxim goes that “the business of the United States is business”; DPE can play a pivotal role in helping prepare students for that business environment. . . now is an opportune time to examine the mission of DPE to see if it is still as relevant as in 1936. . . . We must look forward to the future and embrace it. We know our foundation—now, what about our future?* (National President Clora Mae Baker, *Delta Pi Epsilon Newsletter*, spring, 2007, p. 2.)

#### **National Executive Board**

In 2005 the Society membership elected the following national officers for the 2006-2007 biennium: Clora Mae Baker, president; K. Virginia Hemby, vice president; Nancy Ostrowski, secretary; and Kelly Wilkinson, treasurer. Robert B. Mitchell served as executive director.

The National Executive Board met in 2006 in Cincinnati, Ohio; Indianapolis, Indiana; Tampa, Florida; Denver, Colorado; and Bloomington, Minnesota. In 2007 the board met in Indianapolis, Indiana; New York, New York; Newark, New Jersey; and New Orleans, Louisiana.

The theme for the 2006-2007 biennium was “DPE: Our Foundation . . . Our Future.”

#### **Research Activities**

The 2006 DPE Doctoral Research Award was presented to Bryan D. Sisson for his 2004 study at Utah State University, “Importance of Accounting Software Selection Activities for Small Businesses.” The 2006 DPE Independent Research Award was presented to Martha Rader for her article, “A Comparison of State and National Standards for Business Education,” published in Volume 32 (2005) of the *NABTE Review*.

The 2007 DPE Independent Research Award was presented to Heidi Perreault and Nancy Keith for their article, “Business Students’ Acceptability Perceptions on Using Workplace Technology,” published in Volume 33 (2006) of the *NABTE Review*.

The 2006 DPE National Conference was held in Bloomington, Minnesota, November 16-18—the theme of the conference was “Emerging Leadership Opportunities in Business Education”; Larry Pagel was conference chairperson.

The 2007 conference was held in New Orleans, Louisiana, November 15-17—the theme of the conference was “New Orleans: Rebirth, Progress, and Inspiration”; Donna Redmann was conference chairperson.

### **Research Foundation**

During 2006-2007 members of the DPE Research Foundation, Inc., Board of Directors were Clara Mae Baker, president; K. Virginia Hemby, vice president; Carol Blaszczyński, secretary-treasurer; Pat R. Graves; Nancy Ostrowski; and Robert B. Mitchell, executive director.

The Foundation awarded one grant during the biennium, totaling \$4,065.

### **Chapter Activities and Awards**

Beta Nu Chapter (Utah State University), Gamma Iota Chapter (University of the District of Columbia), and Gamma Pi Chapter (University of Arkansas) were declared inactive in 2006.

Beta Theta Chapter (University of Wisconsin—Whitewater) received the Chapter Service Projects Award, the Chapter Newsletter Award, and the Chapter Recognition Award.

Michelle Gibson Herman (Beta Theta Chapter) received the Theodore Woodward Chapter Leadership Award.

Ellis J. Jones (Phi Chapter) received the first DPE National Leadership Award in 2007.

The John Robert Gregg Award was presented to Judith J. Lambrecht and James Calvert Scott.

### **Membership**

The 2006 DPE membership consisted of active, 1,382; life, 1,448; honorary, 108. In 2006, 120 new members were initiated. At the end of 2006 a total of 30,861 members had been initiated into Delta Pi Epsilon.

The 2007 DPE membership consisted of active, 1,217; retired, 16; life, 1,412; honorary, 106. In 2007, 89 members were initiated. (In 2007 a “retired member” status was added.) At the end of 2007 a total of 30,950 members had been initiated into the Society since it was founded in 1936.

### **Publications**

In 2006 Beryl McEwen was appointed editor of *The Delta Pi Epsilon Journal*. The editorial board consisted of Sherri Lee Arosteguy, associate editor; Heidi R. Perreault, associate editor; Michael Bronner; Margaret Erthal; Lisa Gueldenzoph; Burton S. Kaliski; William McPherson; Martha Rader; Douglas C. Smith; Wanda L. Stitt-Gohdes; Allen D. Truell; William J. Wilhelm; Sandra Williams; and Janet Winter.

In 2006 Pat R. Graves was appointed editor of the *Journal of Applied Research for Business Instruction*. The editorial board consisted of Julie Chadd, Marilyn

Chalupa, Tena Crews, Connie Forde, David J. Hyslop, Donna McAlister-Kizzier, Donna H. Redmann, James Calvert Scott, and Dawn E. Woodland.

The winter 2007 issue of *The Delta Pi Epsilon Journal* was a special issue: “Envisioning the Future of Business Education: A Report of The Agnew Group.”

*Business Education Internet Directory: Worth the Trip*, 3<sup>rd</sup> edition, by Marilyn McAdams, Harriet Rogers, and Denise Roseland (service project of Beta Theta Chapter), was published in 2006.

*National Conference Book of Readings* was published in 2006 and 2007.

During the biennium five newsletters and six national office bulletins were published by the DPE national office.

### **Policies Commission for Business and Economic Education**

The Policies Commission for Business and Economic Education published four statements during the biennium: “This We Believe About Business Teacher Education Programs,” “This We Believe About the Value of Professional Associations,” “This We Believe About Rigor in Business Education,” and “This We Believe About Interdisciplinary Teaching.” The DPE appointees to the Commission were Sandra Braathen, Cyril Kesten, Larry Pagel, and Donna Redmann. Clara Mae Baker and Robert B. Mitchell were ex officio members.

### **Joint Committee on Economic Education**

James Eisenreich, Gregory P. Valentine, and William J. Wilhelm represented DPE on the Joint Committee on Economic Education.

\* \* \*

*One broad definition of a learning community is that the community is informally bound by some common thread. . . . Delta Pi Epsilon is the epitome of the learning community or the community of practice. DPE members come together with a common thread of research for business. DPE members share mutual engagement, whether it is qualitative research or quantitative research; interest in online education; expertise in technology; or a passion for teaching. DPE benefits from the shared resources of its members. (National Treasurer Kelly Wilkinson, Delta Pi Epsilon Bulletin, May, 2007, p. 1)*

### **The 2008-2009 Biennium K. Virginia Hemby Emphasizes DPE’s Niche in a Changing Dynamic**

*. . . we have an organization that needs to find its niche among a changing dynamic . . . As members of this organization, we must work together to*

*either “find the back door” or to make one. Where does Delta Pi Epsilon fit in today’s market? What is our niche?. . . Delta Pi Epsilon is our business, and we need to make our business attractive—to convince people to stay with us, to join us. (Inaugural Address of National President K. Virginia Hemby, Delta Pi Epsilon Newsletter, Winter, 2008, p. 3)*

### **National Executive Board**

In 2007 the Society membership elected the following national officers for the 2008-2009 biennium: K. Virginia Hemby, president; Beryl C. McEwen, vice president; Nancy J. Ostrowski, secretary; and Carol Blaszczyński, treasurer. Robert B. Mitchell was reappointed executive director.

In 2008 the executive board met in Chicago, Illinois; San Antonio, Texas; Herndon, Virginia; in 2009, Las Vegas, Nevada; Chicago, Illinois, New Orleans, Louisiana; and San Francisco, California. The theme of the 2008-2009 biennium was “Delta Pi Epsilon: Our Niche Amid a Changing Dynamic.”



### **Select National Leaders of the Society**

*Ellis J. Jones, 1966-1987 executive director; Peter F. Meggison, 1998-1999 national president; Judith J. Lambrecht, 2004-2005 national president; Marcia A. Anderson, 2000-2001 national president; Larry G. Pagel, 2002-2003 national president; Clora Mae Baker, 2006-2007 national president; Sharon Lund O’Neil, 1994-1995 national president; Robert B. Mitchell, 1988-2011 executive director*



## Research Activities

The 2008 Doctoral Research Award was presented to Joy Roach for her 2006 study at Southern Illinois University Carbondale, “Factors Affecting Business Communication Creation and Productivity.” The 2008 Master’s Research Award was presented to Heather Laturnas for her 2007 study at the University of Regina, “Interdisciplinary Learning in High School Business Education.” The 2008 Independent Research Award was presented to William J. Wilhelm and Alan B. Czyzewski for their article, “A Quasi-Experimental Study of Moral Reasoning of Undergraduate Business Students Using an Ethical Decision-Making Framework in a Basic Accounting Course,” published in Volume 48, No. 3 (2006), of *The Delta Pi Epsilon Journal*. The 2009 Doctoral Research Award was presented to Lynn B. Keane for her 2007 study at New York University, “A Technology-Supported Academic Community of Practice: A Case Study.” The 2009 Master’s Research Award was presented to Ursela Gavin Jones for her 2008 study at North Carolina A&T State University, “Performance of At-Risk Students in Business Education.” The 2009 Independent Research Award was presented to Lynette Molstad Gorder for her 2008 article, “A Study of Teacher Perceptions of Instructional Technology Integration in the Classroom,” published in Volume 50, No. 2 (2008), of *The Delta Pi Epsilon Journal*.

The 2008 DPE National Conference was held in Chicago, Illinois, November 20-22—the theme of the conference was “The Professional Journey: Mapping the Future”; William Wilhelm was conference chairperson. The 2009 DPE National Conference was held in San Francisco, California, November 19-21—the theme of the conference was “Challenges Today & Strategies for Tomorrow”; Martha Rader was conference chairperson.

## Research Foundation

During 2008-2009 members of the DPE Research Foundation, Inc., Board of Directors were K. Virginia Hemby, president; Beryl McEwen, vice president; Donna Redmann, secretary-treasurer; Nancy Ostrowski; and Martha Rader. Robert B. Mitchell continued to serve as executive director.

The Foundation awarded seven grants during the biennium, totaling \$29,892.

## Chapter Activities and Awards

Beta Chapter (Oklahoma State University) and Gamma Theta Chapter (Arkansas State University) were declared inactive in 2009.

Alpha Chapter (New York University) received the Chapter Newsletter Award. Beta Theta Chapter (University of Wisconsin—Whitewater) received the Chapter Service Projects Award, Chapter Research Projects Award, Chapter Newsletter Award, and Chapter Recognition Award.

The Theodore Woodward Chapter Leadership Award was presented to Patricia King for her outstanding service to Beta Theta Chapter (University of Wisconsin—Whitewater).



The National Leadership Award was presented to Peter F. Meggison, National Chapter, for his outstanding leadership and service to the national organization and the profession.

The John Robert Gregg Award was presented to Donna H. Redmann and Wanda L. Stitt-Gohdes.

### **Membership**

The 2008 membership consisted of active, 1,086; retired, 34; life, 1,407; and honorary, 83. In 2008, 82 members were initiated. At the end of 2008, 31,032 members had been initiated into Delta Pi Epsilon.

The 2009 membership consisted of the following: active, 953; retired, 17; life, 1,404; and honorary, 83. In 2009, 63 members were initiated. At the end of 2009, 31,095 members had been initiated into the Society since it was founded in 1936.

### **Publications**

Dawn E. Woodland was appointed editor of *The Delta Pi Epsilon Journal*, with associate editors Wanda L. Stitt-Gohdes and Linda Szul. The editorial board consisted of Michael Bronner, Betty J. Brown, Edgard Cornachione, Jean Danner, Dennis Gehris, Barbara Hagler, Valerie Haney, Andrea Henne, Ginny Richerson, Bryan Sisson, Sue Sydow, Allen D. Truell, George Walendowski, Sandra Williams, and S. Ann Wilson.

Lisa E. Gueldenzoph was appointed editor of *Journal of Applied Research for Business Instruction*. The editorial board consisted of Faridah Awang, James E. Bartlett, Robert Brookshire, Marcia Bush, Julie Chadd, Marilyn Chalupa, Mary Cook-Wallace, Linda Cresap, Tena B. Crews, Ruthann Dirks, Margaret Erthal, Connie Forde, Ronda Henderson, Jeanette A. Karjala, Cyril Kesten, Peter F. Meggison, Larry G. Pagel, and Judee Timm.

New publications included *Are You Smarter Than a Business Education Student?*, a customized presentation for classroom use developed by Beta Theta Chapter (University of Wisconsin—Whitewater).

*National Conference Book of Readings* was published in 2009 and 2010.

During the biennium six newsletters and six national office bulletins were published by the DPE national office.

### **Policies Commission for Business and Economic Education**

The Policies Commission for Business and Economic Education published four statements during the biennium: “This We Believe About the Value of Career Clusters in Business Education,” “This We Believe About the Transformation and Future of Business Education,” “This We Believe About the Induction and Mentoring of New Business Teachers,” and “This We Believe About Virtual Learning Environments.” The DPE appointees to the Commission were Sandra Braathen, Cyril Kesten, Sherry Roberts, and Sharon Rouse. K. Virginia Hemby and Robert B. Mitchell were ex officio members.

## Joint Committee on Economic Education

William J. Wilhelm, Nancy Ostrowski, and Gregory P. Valentine represented DPE on the Joint Committee on Economic Education.

## Task Force Studies DPE-NBEA-NABTE Affiliation

For several years leaders of DPE had been discussing among themselves, in the light of current conditions prevailing in graduate business teacher education programs throughout the country, how the Society could be better served through an affiliation with NBEA. The International Society for Business Education (ISBE), representing international business educators, and the National Association for Business Teacher Education (NABTE), representing business teacher educators, were already established affiliates of NBEA. Many DPE leaders felt that the Society could naturally affiliate with NBEA as its research division and, thereby, assure unity in the field of business education.

A meeting was convened on February 2, 2008, to discuss the positive and negative aspects of such a venture. The meeting was chaired by Peter F. Meggison, a past president of both DPE and NBEA. DPE was represented by K. Virginia Hemby, DPE president; Beryl McEwen, DPE vice president; Marcia A. Anderson, a DPE past president and chair of the Strategic Planning Committee; and Robert B. Mitchell, DPE executive director. NBEA was represented by Jim Rucker, NBEA president, and Janet M. Treichel, NBEA executive director. NABTE was represented by Wayne Moore, NABTE president-elect, and John Olivo, NABTE director to the NBEA executive board. Following a productive discussion, the following statement was issued by the task force: "To meet the demands of our changing business education profession, DPE, NABTE, and NBEA have begun a dialogue to consider the affiliation of Delta Pi Epsilon with the National Association for Business Teacher Education and the National Business Education Association. As information becomes available, it will be shared with the membership of each association."

After much discussion, it was concluded that DPE's affiliation would be with NBEA, rather than with NABTE, since DPE's position with NBEA would parallel NABTE's position. Therefore, a DPE-NBEA affiliation committee was established, and discussions continued during 2008-2009 at NBEA executive board meetings and DPE executive board meetings. In addition, open dialogue sessions took place both years at the DPE Research Conference and the DPE chapter leaders' breakfast at the NBEA conventions. DPE members and chapters were also given the opportunity to express their views concerning potential affiliation through a survey of all DPE members and through communications issued by the DPE National Office.

\* \* \*

*Business education—we have attempted to define it, to capture its essence, its meaning—but it is an elusive creature, always changing, adapting to its surroundings much like the proverbial chameleon. AACSB defines all*

*programs housed in Colleges of Business as Business Education. Google “Business Education” and what do you see? You see a link for NBEA, a link for Texas Business & Education Coalition, a link for Centers for International Business Education, a link for Business Education Compact . . . according to Google, on March 10, 2008, when I performed this search, about 102,000,000 references to business education were noted—and I could have viewed them all had I been of a mind to do so (or had the time). I also saw advertisements on the Google search list for University of Phoenix, ITT, South University—among others—but those degrees they were advertising were in business areas (Accounting, HR, IT, Finance . . .) but they were called Business Education. CHANGE is not a bad thing, but it can be unsettling when we are unable to find our identity or to determine where we “fit” in the big picture. Business Education is “marked by continuous—usually productive—activity or change.” Our field is definitely a changing dynamic. (National President K. Virginia Hemby, Delta Pi Epsilon Newsletter, Summer, 2008, p. 2)*

## **The 2010-2011 Biennium**

### **Celebrating DPE’s Diamond Jubilee**

### **Beryl C. McEwen Builds on a Legacy of Professionalism**

#### *Embracing Professional Service*

*Those with vision have the ability to see the evolution and growth of the organization and are often willing to lead or assist in leading the organization toward its potential. While some might be willing to lead the march in fulfilling the organization’s vision, others are needed to support and work toward its accomplishment. Service does not require one more than the other; both the leaders and the supporters are equally important and very necessary to the survival and growth of the organization. . . . Service is very critical to the growth and survival of Delta Pi Epsilon. Building on our strong legacy of professionalism requires service by all of us. (National President Beryl McEwen, Delta Pi Epsilon Newsletter, Spring, 2010, pp. 2-3)*

#### **National Executive Board**

In 2009 the Society membership elected the following national officers for the 2010-2011 biennium: Beryl C. McEwen, president; Glenn Bailey, vice president; Lisa Gueldenzoph Snyder, secretary; Cyril Kesten, treasurer. Robert B. Mitchell served as executive director.

In 2010 the National Executive Board met in San Francisco, California; Greensboro, North Carolina; San Diego, California; and Philadelphia, Pennsylvania. In 2011, in New Orleans, Louisiana; Indianapolis, Indiana; and in virtual meetings.

The theme for the 2010-2011 biennium was “Building on Our Strong Legacy of Professionalism.”

## Research Activities

The 2010 DPE Doctoral Research Award was presented to Kellie A. Shumack for her 2008 study at Mississippi State University, “Professional Development in Business Education: Status, Needs, Motivators, and Impact on Instruction.” The 2010 DPE Independent Research Award was presented to Sunil Hazari, Alexa North, and Deborah Moreland for their article, “Investigating Pedagogical Value of Wiki Technology,” published in Volume 20, No. 2 (2009), of the *Journal of Information Systems Education*.

The 2011 DPE Doctoral Research Award was presented to Craig Wentworth for his 2009 study at the University of Georgia, “The Role of Collegiate Sports Participation in Preparing Women for Executive Leadership.” The 2011 DPE Independent Research Award was presented to Tena Crews and Kelly Wilkinson for their article, “Students’ Perceived Preference for Visual and Auditory Assessment with E-Handwritten Feedback,” published in Volume 73 (2010) of the *Business Communication Quarterly*.

The 2010 DPE National Conference was held in Philadelphia, Pennsylvania, November 18-20—the theme of the conference was “Meeting the Needs of Diverse Learners”; Wanda Stitt-Gohdes was conference chairperson. The 2011 conference was held in Indianapolis, Indiana, November 17-19—the theme of the conference was “Celebrating DPE’s Diamond Jubilee”; Kelly Wilkinson was conference chairperson.

## Research Foundation

The 2010-2011 members of the DPE Research Foundation, Inc., Board of Directors were Beryl C. McEwen, president; Glenn Bailey, vice president; Donna H. Redmann, secretary-treasurer; Martha Rader; Lisa Gueldenzoph Snyder; and Robert B. Mitchell, executive director.

The Foundation awarded three grants during the biennium, totaling \$4,400.



### *75th Anniversary National Executive Board*

*(Left to right): Cyril Kesten, treasurer; Lisa Gueldenzoph Snyder, secretary; Beryl C. McEwen, president; Glenn Bailey, vice president*

## Chapter Activities and Awards

Beta Psi Chapter (Eastern Illinois University) and Gamma Chi Chapter (Northwest Missouri State University) were declared inactive in 2010.

Beta Theta Chapter (University of Wisconsin—Whitewater) received the Chapter Newsletter Award and the Chapter Recognition Award.

The National Leadership Award was presented to Marcia A. Anderson, Beta Omicron Chapter, for her outstanding leadership and service to the national organization and the profession.

The John Robert Gregg Award was presented to Larry G. Pagel and Carol Blaszczyński.

## Membership

The 2010 DPE membership consisted of active, 849; retired, 18; life, 1,369; and honorary, 82. In 2010, 62 new members were initiated. At the end of 2010, a total of 31,157 members had been initiated into Delta Pi Epsilon.

The 2011 DPE membership consisted of active, 671; retired, 22; life, 1,369; and honorary, 82. In 2011 23 members were initiated. A total of 31,180 members have been initiated into the Society since it was founded in 1936.

## Publications

In 2010 Diane Fisher was appointed editor of *The Delta Pi Epsilon Journal*. The editorial board consisted of Jorge Gaytan, associate editor; Sharon Rouse, associate editor; Marcia A. Anderson; Carol Blaszczyński; Jason Bronowitz; Chia-An Chao; Tena Crews; Dennis Gehris; Barbara Hagler; Valerie Haney; Andrea Henne; Burton S. Kaliski; Margaret S. Kilcoyne; Judith J. Lambrecht; Mable Okojie; Ginny Richerson; Wanda L. Stitt-Gohdes; Sue Sydow; Allen D. Truell; Lila Waldman; and Sandra Williams.

In 2010 Margaret J. Erthal was appointed editor of the *Journal of Applied Research for Business Instruction*. The editorial board consisted of Faridah Awang, Marcia Bush, Julie Chadd, Connie Forde, K. Virginia Hemby, Ronda Henderson, Peter Meggison, Kathy Mountjoy, Larry G. Pagel, James L. Stapleton, Judee Timm, and William J. Wilhelm.

New publications included *Case Studies in Computer Ethics*, edited by Peter F. Meggison, 2010; *Teaching Keyboarding*, 4<sup>th</sup> ed, by Gary N. McLean and Julie Chadd and Susan Maxam, editor, 2011; *The Business Education Profession: Principles and Practices*, 2<sup>nd</sup> ed., by Wanda Stitt-Gohdes, 2011; and *National Conference Book of Readings*, 2010 and 2011.

During the biennium five newsletters and two national office bulletins were published by the DPE national office.

## Policies Commission for Business and Economic Education

The Policies Commission for Business and Economic Education published four policy statements during the biennium: “This We Believe About Generativity in

Business Education,” “This We Believe About Virtual Professional Development,” “This We Believe About Financial Literacy,” and “This We Believe About Ethics in the Virtual Environment.” The DPE appointees to the Commission were Barbara Hagler; K. Virginia Hemby; Sherry Roberts; and Sharon Rouse. Beryl McEwen and Robert B. Mitchell were ex officio members.

### **Joint Committee on Economic Education**

Nancy Ostrowski, Gregory P. Valentine, and William J. Wilhelm represented DPE on the Joint Committee on Economic Education.

### **Diamond Jubilee Celebration**

Since 2011 represented the 75<sup>th</sup> anniversary of the founding of Delta Pi Epsilon at New York University, a number of activities were planned to commemorate the event. A special DPE luncheon was held at the NBEA Convention in New Orleans in April, which included a trivia game in which members participated. A blog for reminiscing was developed and various souvenirs were designed. The culminating activity was a formal anniversary celebration which was held in conjunction with the National Conference in Indianapolis, Indiana, November 17-19. Among other things, the celebration included an opportunity for individual chapters to be spotlighted, displays of pictures and historical memorabilia, and a presentation by four DPE past presidents (Marcia Anderson, Betty Brown, Judith Lambrecht, Sharon Lund O’Neil) on DPE award winners, journals, special publications, and conferences and events. Tena Crews and Kelly Wilkinson developed a multimedia presentation of the history of the Society. Peter F. Meggison was chair of the 75<sup>th</sup> anniversary events.

### **DPE Affiliates with NBEA**

Both the DPE and NBEA Executive Boards approved the official affiliation of DPE with NBEA commencing on January 1, 2012. The affiliation was approved by a vote of the active chapters of DPE. Like ISBE and NABTE, DPE will elect a person as a director to the NBEA Executive Board. DPE officers will now include the president, vice president, and director of communications. The DPE publications program will continue as will the operation of the DPE Research Foundation. The local chapter structure will dissolve, and one will have to be a member of NBEA to join DPE. The DPE National Office in Little Rock, Arkansas, formally closes on December 31, 2011. With the affiliation of Delta Pi Epsilon with the National Business Education Association, the Society will focus specifically on its role as the research division of the association.

\* \* \*

*As the beauty of the diamond is forever, so is the impact of Delta Pi Epsilon on the excellence in research and teaching for business.*

Appendix

Table 1: National Offices and Executive Directors 1936-2011

Year	President	Vice President	Secretary	Treasurer	Historian	Executive Secretary/ Director
1938-39	Charles E. Hainfeld (Al)	James M. Thompson (Al)	Madeline S. Strony (Al)	Robert N. Tarkington (Al)	Ruby Hemphill (Be)	
1940-41	McKee Fisk (Be)	M. Herbert Freeman (Al)	Ruby Hemphill (Be)	Francis V. Unsticker (Be)	Eugene Hughes (Al)	
1942-43	D. D. Lessenberry (Be)	Peter L. Agnew (Al)	Ruth Williams (Be)	James M. Thompson (Al)	Icie B. Johnson (Be)	
				Earl S. Dickerson (Al)		
1944-45	Paul S. Lomax (Al)	Helen M. Johnston (Be)	Ruth Williams (Be)	Earl S. Dickerson (Al)	William B. Logan (Ze)	
1946-47	Earl S. Dickerson (Al)	William B. Logan (Ze)	Elsie Garlow (Ga)	J. Edward Silverthorn (Be)	Mary L. Sufana (Et)	
1948-49	Elvin S. Eyster (Th)	Elsie G. Garlow (Ga)	Mary L. Sufana (Et)	Robert A. Lowry (Be)	W. J. Masson (Oc)	
1950-51	M. Herbert Freeman (Al)	John M. Trytten (Ka)	Gladys Bahr (De)	Robert A. Lowry (Be)	Rowena Wellman (Ze)	
1952-53	J Marshall Hanna (Rh)	Earl Nicks (Et)	Mary Connelly (Ep)	Theodore Woodward (Ga)	Dorothy H. Veon (Ta)	Charles Hicks (Rh)
1954-55	Herbert A. Tonne (Al)	Theodore Woodward (Ga)	Rosemarie Scavariel (Ga)	Frank Herndon (Up)	Dorothy H. Veon (Ta)	Charles Hicks (Rh)
1956-57	Theodore Woodward (Ga)	Dorothy H. Veon (Ta)	Ramon Heimerl (Ph)	Frank Herndon (Up)	Evelyn Babb (Xi)	Charles Hicks (Rh)
1958-59	Dorothy H. Veon (Ta)	Frank Herndon (Up)	Francis Saunders (Mu)	John Binnion (Et)	Irene Place (Ka)	Ruth Anderson (AEp)
			Anthony Hanjiis (Ch)			
1960-61	Frank Herndon (Up)	Robert Lowry (Be)	Mary M. Bates (Io)	John Binnion (Et)	Irene Place (Ka)	Ruth Anderson (AEp)
1962-63	Robert Lowry (Be)	Irene Place (Ka)	Elizabeth Van Deveer (Al)	John Rau (La)	Carol Ostness (Et)	John Binnion (Et)
1964-65	Ruth I. Anderson (AEp)	Ramon Heimerl (Ph)	Irol Balsley (Th)	John Rau (La)	Agnes Kinney (Et)	John Binnion (Et)
1966-67	Ramon Heimerl (Ph)	F. Kendrick Bangs (Alo)	Louise Westrick (Ch)	Eugene Wylie (Th)	Cecilia Hopkins (AKa)	Ellis Jones (Ph)
1968-69	F. Kendrick Bangs (Alo)	Raymond White (Si)	Cecilia Hopkins (AKa)	Eugene Wylie (Th)	Della Rosenberg (Xi)	Ellis Jones (Ph)
1970-71	Raymond White (Si)	Eugene Wylie (Th)	Doris Crank (La)	Gordon Culver (AUp)	Della Rosenberg (Xi)	Ellis Jones (Ph)
1972-73	Eugene Wylie (Th)	Gordon Culver (Be)	Wanda Blockhus (BEp)	Robert A. Ristau (AEt)	Franklin Hansen (Al)	Ellis Jones (Ph)
1974-75	Gordon Culver (Be)	Wanda Blockhus (BEp)	Alice Yetka Byrnes (AAI)	Franklin Hansen (Al)	Eva M. Maxey (APh)	Ellis Jones (Ph)
1976-77	Wanda Blockhus (BEp)	Robert A. Ristau (AEt)	John S. Nigro (BMu)	Jeanne L. Holley (Up)	Robbie Woodall (Og)	Ellis Jones (Ph)
1978-79	Robert A. Ristau (AEt)	R. Dermont Bell (AOg)	John S. Nigro (BMu)	Jeanne L. Holley (Up)	LaNeta L. Carlock (AUUp)	Ellis Jones (Ph)
1980-81	R. Dermont Bell (AOg)	Charles R. Hopkins (Ph)	Jolene D. Scriven (APh)	Richard J. Dallas (BEp)	Gail Manning (Alo)	Ellis Jones (Ph)



*Table 1: (Continued).*

Year	President	Vice President	Secretary	Treasurer	Historian	Executive Secretary/ Director
1982-83	Charles R. Hopkins (Ph)	Jo Ann Hemmington (ASi)	Jolene D. Scriven (APh)	Ann Brehm Hanson (BSi)	Robert B. Mitchell (BOg)	Ellis Jones (Ph)
1984-85	Jo Ann Hemmington (ASi)	Jolene D. Scriven (APh)	Jean R. Most (GAl)	Ann Brehm Hanson (BSi) Russell G. DeVriendt (Et)	Ginger Rose (Rh)	Ellis Jones (Ph)
1986-87	Jolene D. Scriven (APh)	Scot Ober (GSi)	Judith Lambrecht (AEt)	Robert B. Mitchell (BOg)	Ginger A. Rose (Rh)	Ellis Jones (Ph)
1988-89	Scot Ober (GSi)	Charles J. Inacker (BPi)	Pauline A. Newton(BEp)	Ginger Rose (Rh)	Sharon Dornier-Andelora(BPh)	Robert B. Mitchell (BOg)
1990-91	Charles J. Inacker (BPi)	Betty J. Brown (Pi)	Marian C. Crawford (Up)	David J. Hyslop (BEt)	Iris W. Johnson (GGa)	Robert B. Mitchell (BOg)
1992-93	Betty J. Brown (Pi)	Sharon Lund O'Neil (AGa)	Marian C. Crawford (Up)	David J. Hyslop (BEt)	Peter F. Meggison (Ep)	Robert B. Mitchell (BOg)
1994-95	Sharon Lund O'Neil (AGa)	B. June Schmidt (BGa)	F. Stanford Wayne (GOg)	Peter F. Meggison (Ep)	Terry D. Roach (GTh)	Robert B. Mitchell (BOg)
1996-97	B. June Schmidt (BGa)	Peter F. Meggison (Ep)	F. Stanford Wayne (GOg)	Terry D. Roach (GTh)		Robert B. Mitchell (BOg)
1998-99	Peter F. Meggison (Ep)	Marcia A. Anderson (AUp)	Cathy Tkacik (DAL)	Harry E. Nowka (Be)		Robert B. Mitchell (BOg)
2000-01	Marcia A. Anderson (AUp)	Larry G. Pagel (ATa)	Margaret Erthal (BBc)	Cathy Tkacik (DAL)		Robert B. Mitchell (National)
2002-03	Larry G. Pagel (ATa)	Judith J. Lambrecht (Phi)	Patricia I. Wilson (Nu)	Nancy J. Ostrowski (BPh)		Robert B. Mitchell (National)
2004-05	Judith J. Lambrecht (Phi)	Clora Mae Baker (Pi)	Patricia I. Wilson (Nu)	Nancy J. Ostrowski (BPh)		Robert B. Mitchell (National)
2006-07	Clora Mae Baker (Pi)	K. Virginia Hemby (GEt)	Nancy J. Ostrowski (BPh)	Kelly Wilkinson (GCh)		Robert B. Mitchell (National)
2008-09	K. Virginia Hemby (GEt)	Beryl C. McEwen (BOc)	Nancy J. Ostrowski (BPh)	Carol Blaszczyński (DKa)		Robert B. Mitchell (National)
2010-11	Beryl C. McEwen (BOc)	Glenn Bailey (APh)	Lisa Gueldezenoph Snyder (BEt)	Cyril Kesten (Oc)		Robert B. Mitchell (National)